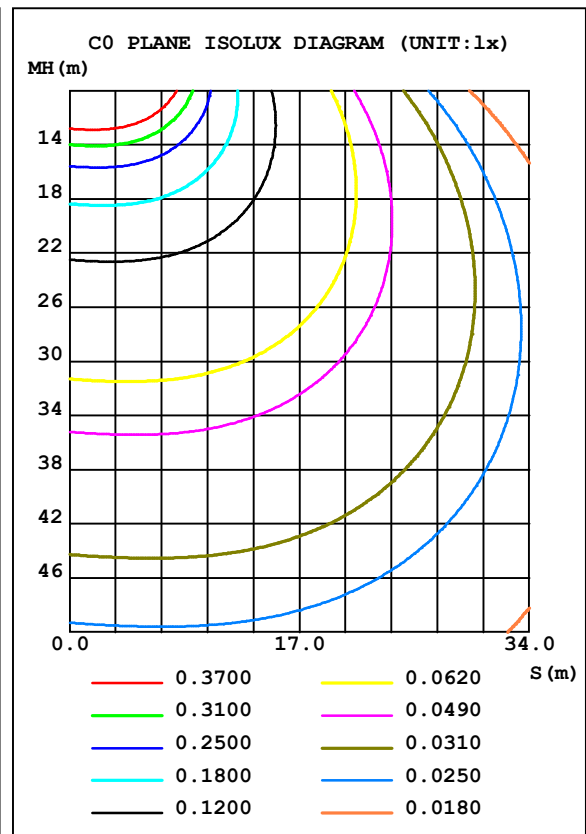
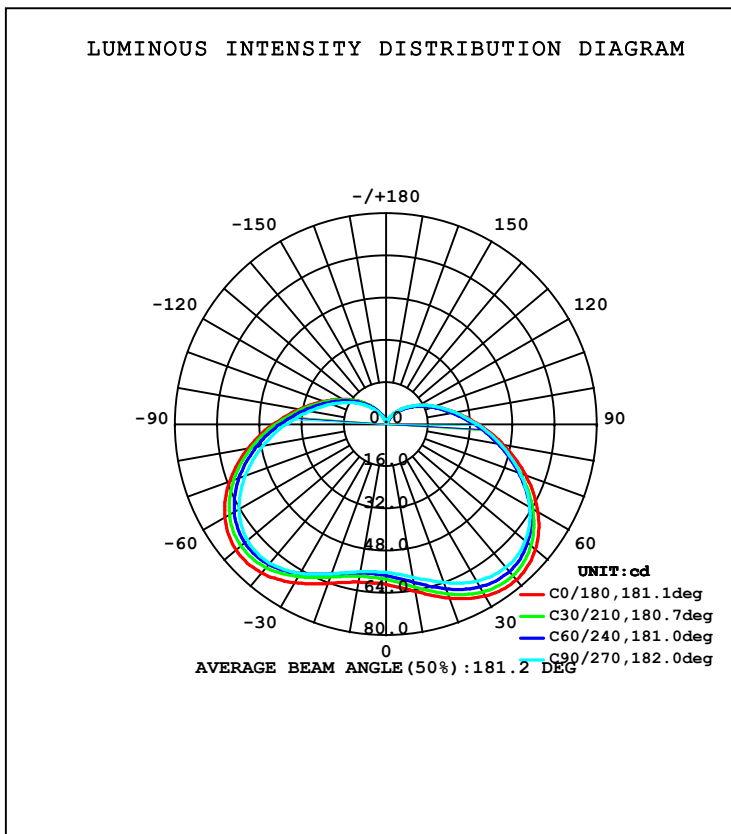


LUMINAIRE PHOTOMETRIC TEST REPORT

NAME: C37 5.5W 470LM WW	TYPE:	WEIGHT:
DIM.:	SPEC.:	SERIAL No.:
MFR.: MK	SUR.:	PROTECTION ANGLE:

DATA OF LAMP		PHOTOMETRIC DATA			
MODEL	E14	Imax (cd)	76.97	S/MH (C0/180)	1.85
NOMINAL POWER (W)	5.5	LOR (%)	228.7	S/MH (C90/270)	1.85
RATED VOLTAGE (V)	230	TOTAL FLUX (lm)	476.94	$\eta$ UP, DN (C0-180)	23.9, 88.8
NOMINAL FLUX (lm)	208.502	CIE CLASS	SEMI-D.	$\eta$ UP, DN (C180-360)	26.4, 89.6
LAMPS INSIDE	1	$\eta$ up (%)	50.4	CIBSE SHR NOM	1.75
TEST VOLTAGE (V)	230.3	$\eta$ down (%)	178.4	CIBSE SHR MAX	1.75



C Range: 0 - 360DEG  
 C Interval: 15.0DEG  
 Test Speed: HIGH  
 Temperature: 25.3DEG  
 Operators:  
 Test Date: 2013-09-28

$\gamma$  Range: 0 - 180DEG  
 $\gamma$  Interval: 1.0DEG  
 Test System: EVERFINE GO-2000A\_V1 SYSTEM V2.0.276  
 Humidity: 65.0%  
 Test Distance: 8.920m [K=1.0000]  
 Remarks:

ZONAL FLUX DIAGRAM

ZONAL FLUX DIAGRAM:

$\gamma$	C0	C45	C90	C135	C180	C225	C270	C315	$\gamma$	$\Phi$ zone	$\Phi$ total	%lum, lamp
10	64.30	61.79	58.88	56.43	60.79	57.74	56.79	57.44	0- 10	5.528	5.528	1.16,2.65
20	70.10	67.54	63.83	60.26	64.18	60.89	60.39	62.05	10- 20	17.28	22.81	4.78,10.9
30	75.20	72.49	68.65	65.07	69.38	65.85	65.24	66.76	20- 30	30.43	53.24	11.2,25.5
40	76.97	74.06	70.83	68.35	73.55	69.90	68.69	69.05	30- 40	43.79	97.03	20.3,46.5
50	73.95	71.03	68.94	68.10	74.25	70.78	68.57	67.37	40- 50	54.69	151.7	31.8,72.8
60	66.48	63.81	62.92	63.84	70.60	67.35	64.39	61.61	50- 60	60.49	212.2	44.5,102
70	56.27	53.86	54.05	56.28	63.12	60.20	56.82	53.00	60- 70	60.08	272.3	57.1,131
80	45.29	43.32	44.12	46.94	53.22	50.80	47.45	43.32	70- 80	54.29	326.6	68.5,157
90	35.17	33.70	34.68	37.52	42.93	40.96	37.97	34.08	80- 90	45.30	371.9	78,178
100	26.78	25.65	26.61	29.10	33.50	31.99	29.47	26.19	90-100	35.45	407.3	85.4,195
110	20.06	19.17	20.05	22.14	25.59	24.47	22.45	19.78	100-110	26.32	433.7	90.9,208
120	14.61	13.93	14.72	16.44	19.15	18.35	16.75	14.56	110-120	18.53	452.2	94.8,217
130	10.04	9.513	10.24	11.72	13.83	13.28	12.00	10.18	120-130	12.17	464.4	97.4,223
140	6.212	5.831	6.474	7.685	9.311	8.980	7.940	6.471	130-140	7.181	471.5	98.9,226
150	3.249	3.004	3.509	4.406	5.543	5.406	4.617	3.544	140-150	3.582	475.1	99.6,228
160	1.390	1.236	1.552	2.058	2.735	2.695	2.220	1.582	150-160	1.385	476.5	99.9,229
170	0.6141	0.6063	0.5686	0.7640	1.034	0.9432	0.7842	0.5528	160-170	0.3715	476.9	100,229
180	0.5931	0.5678	0.5577	0.5577	0.6185	0.5779	0.5577	0.5475	170-180	0.0597	476.9	100,229
DEG	LUMINOUS INTENSITY:cd									UNIT:lm		

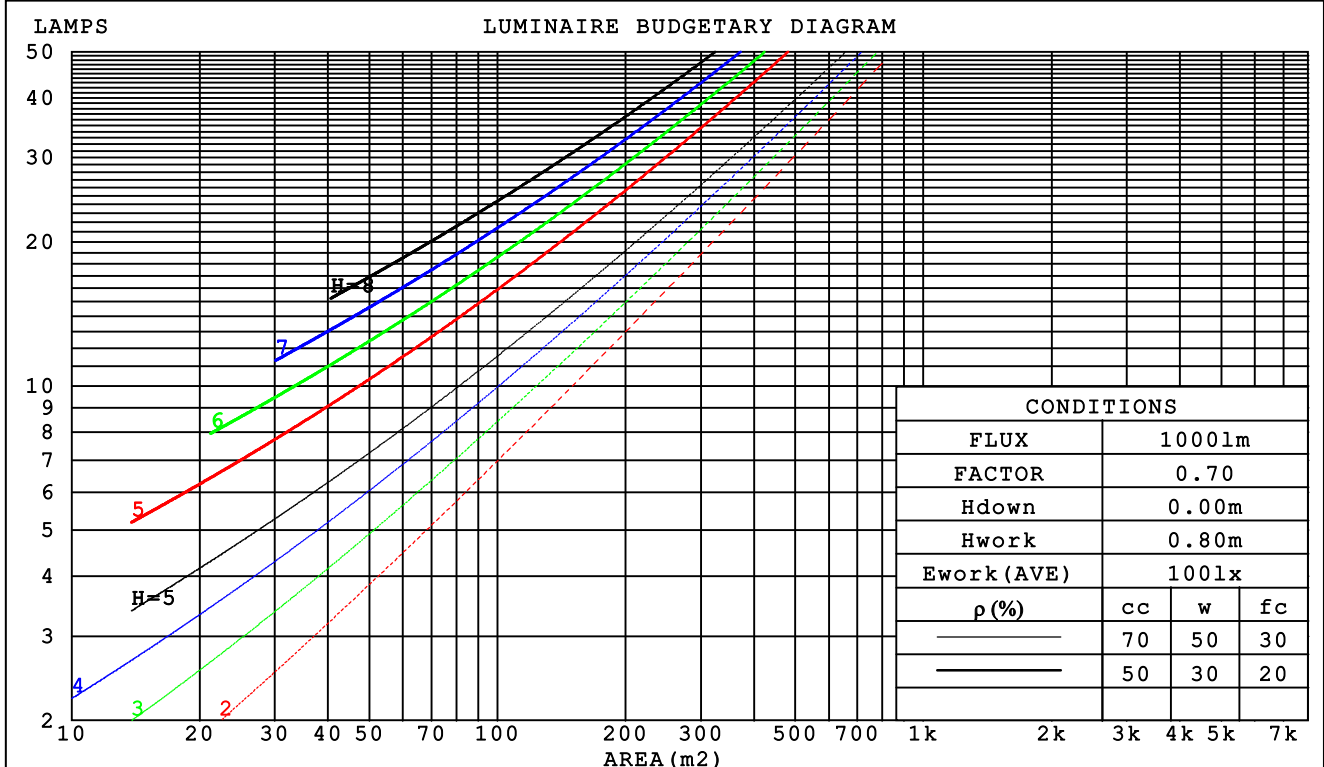
C Range: 0 - 360DEG  
 C Interval: 15.0DEG  
 Test Speed: HIGH  
 Temperature:25.3DEG  
 Operators:  
 Test Date:2013-09-28

$\gamma$  Range: 0 - 180DEG  
 $\gamma$  Interval: 1.0DEG  
 Test System:EVERFINE GO-2000A\_V1 SYSTEM V2.0.276  
 Humidity:65.0%  
 Test Distance:8.920m [K=1.0000]  
 Remarks:

CU AND LUMINAIRE BUDGETARY ESTIMATE DIAGRAM

NAME: C37 5.5W 470LM WW	TYPE:	WEIGHT:
DIM.:	SPEC.:	SERIAL No.:
MFR.: MK	SUR.:	PROTECTION ANGLE:

pcc	80%			70%			50%			30%			10%			0
pw	50%	30%	10%	50%	30%	10%	50%	30%	10%	50%	30%	10%	50%	30%	10%	0
pfc	20%			20%			20%			20%			20%			0
RCR	RCR:Room Cavity Ratio						Coefficients of Utilization(CU)									
0.0	2.60	2.60	2.60	2.48	2.48	2.48	2.26	2.26	2.26	2.06	2.06	2.06	1.87	1.87	1.87	1.78
1.0	2.12	1.98	1.86	2.02	1.89	1.78	1.82	1.72	1.63	1.65	1.57	1.49	1.48	1.42	1.36	1.28
2.0	1.79	1.59	1.43	1.70	1.52	1.37	1.53	1.39	1.26	1.38	1.26	1.16	1.23	1.14	1.06	.98
3.0	1.53	1.31	1.13	1.45	1.25	1.09	1.31	1.14	1.01	1.18	1.04	.93	1.05	.94	.85	.77
4.0	1.33	1.10	.93	1.26	1.05	.89	1.14	.96	.82	1.03	.88	.76	.92	.80	.70	.62
5.0	1.17	.94	.77	1.11	.90	.75	1.01	.83	.69	.91	.75	.64	.81	.69	.58	.52
6.0	1.04	.82	.66	.99	.78	.63	.90	.72	.59	.81	.66	.54	.73	.60	.50	.44
7.0	.93	.72	.57	.89	.69	.55	.81	.63	.51	.73	.58	.47	.66	.53	.43	.37
8.0	.84	.63	.49	.80	.61	.48	.73	.56	.44	.66	.52	.41	.60	.47	.38	.32
9.0	.77	.57	.43	.73	.55	.42	.67	.50	.39	.61	.46	.36	.55	.43	.33	.29
10.0	.70	.51	.39	.67	.49	.37	.61	.46	.35	.56	.42	.32	.51	.39	.30	.25



C Range: 0 - 360DEG  
 C Interval: 15.0DEG  
 Test Speed: HIGH  
 Temperature: 25.3DEG  
 Operators:  
 Test Date: 2013-09-28

γ Range: 0 - 180DEG  
 γ Interval: 1.0DEG  
 Test System: EVERFINE GO-2000A\_V1 SYSTEM V2.0.276  
 Humidity: 65.0%  
 Test Distance: 8.920m [K=1.0000]  
 Remarks:

WEC AND CCEC

NAME: C37 5.5W 470LM WW	TYPE:	WEIGHT:
DIM.:	SPEC.:	SERIAL No.:
MFR.: MK	SUR.:	PROTECTION ANGLE:

ρ <sub>cc</sub>	80%			70%			50%			30%			10%			0
ρ <sub>w</sub>	50%	30%	10%	50%	30%	10%	50%	30%	10%	50%	30%	10%	50%	30%	10%	0
ρ <sub>fc</sub>	20%			20%			20%			20%			20%			0
RCR	RCR:Room Cavity Ratio						Wall Exitance Coefficients (WEC)									
0.0																
1.0	.970	.551	.175	.937	.535	.170	.877	.503	.161	.822	.474	.152	.771	.447	.144	
2.0	.823	.451	.138	.794	.437	.135	.739	.411	.128	.689	.386	.121	.642	.363	.114	
3.0	.722	.384	.115	.696	.373	.112	.646	.350	.106	.600	.329	.101	.558	.309	.096	
4.0	.644	.335	.098	.620	.325	.096	.575	.305	.091	.533	.286	.086	.494	.269	.082	
5.0	.582	.296	.086	.560	.287	.084	.519	.270	.080	.481	.254	.075	.445	.238	.071	
6.0	.530	.266	.076	.510	.258	.074	.473	.242	.070	.438	.227	.067	.405	.213	.063	
7.0	.487	.241	.068	.468	.233	.067	.434	.219	.063	.402	.206	.060	.372	.193	.057	
8.0	.449	.220	.062	.433	.213	.060	.401	.200	.057	.372	.188	.054	.344	.176	.051	
9.0	.418	.202	.056	.402	.196	.055	.373	.184	.052	.346	.173	.050	.320	.162	.047	
10.0	.390	.187	.052	.376	.181	.051	.349	.171	.048	.323	.160	.046	.299	.150	.043	

ρ <sub>cc</sub>	80%			70%			50%			30%			10%			0
ρ <sub>w</sub>	50%	30%	10%	50%	30%	10%	50%	30%	10%	50%	30%	10%	50%	30%	10%	0
ρ <sub>fc</sub>	20%			20%			20%			20%			20%			0
RCR	RCR:Room Cavity Ratio						Ceiling Cavity Exitance Coefficients (CCEC)									
0.0	.820	.820	.820	.700	.700	.700	.478	.478	.478	.275	.275	.275	.088	.088	.088	
1.0	.818	.742	.674	.700	.637	.580	.478	.438	.401	.275	.253	.233	.088	.082	.075	
2.0	.804	.691	.595	.689	.595	.514	.472	.411	.359	.272	.239	.210	.087	.077	.069	
3.0	.788	.654	.547	.676	.564	.474	.464	.392	.333	.268	.229	.196	.086	.074	.064	
4.0	.771	.626	.516	.661	.541	.448	.455	.377	.316	.263	.221	.187	.085	.072	.061	
5.0	.753	.604	.495	.646	.523	.430	.445	.365	.304	.258	.214	.180	.083	.070	.059	
6.0	.735	.586	.480	.632	.508	.418	.436	.356	.296	.253	.209	.176	.082	.068	.058	
7.0	.719	.572	.469	.618	.496	.408	.427	.347	.289	.248	.205	.172	.080	.067	.057	
8.0	.703	.559	.460	.605	.485	.401	.419	.340	.285	.244	.201	.170	.079	.066	.056	
9.0	.688	.548	.454	.593	.476	.396	.411	.334	.281	.239	.198	.168	.077	.065	.056	
10.0	.674	.539	.449	.581	.468	.392	.403	.329	.278	.235	.195	.166	.076	.064	.055	

C Range: 0 - 360DEG  
 C Interval: 15.0DEG  
 Test Speed: HIGH  
 Temperature: 25.3DEG  
 Operators:  
 Test Date: 2013-09-28

γ Range: 0 - 180DEG  
 γ Interval: 1.0DEG  
 Test System: EVERFINE GO-2000A\_V1 SYSTEM V2.0.276  
 Humidity: 65.0%  
 Test Distance: 8.920m [K=1.0000]  
 Remarks:

Uncorrected UGR Table

NAME: C37 5.5W 470LM WW						TYPE:					WEIGHT:				
DIM.:						SPEC.:					SERIAL No.:				
MFR.: MK						SUR.:					PROTECTION ANGLE:				
ceiling/cavity	0.7	0.7	0.5	0.5	0.3	0.7	0.7	0.5	0.5	0.3	0.7	0.7	0.5	0.5	0.3
walls	0.5	0.3	0.5	0.3	0.3	0.5	0.3	0.5	0.3	0.3	0.5	0.3	0.5	0.3	0.3
working plane	0.2	0.2	0.2	0.2	0.2	0.2	0.2	0.2	0.2	0.2	0.2	0.2	0.2	0.2	0.2
Room dimensions	Viewed crosswise					Viewed endwise									
x = 2H y = 2H	16.7	18.1	17.3	18.7	19.4	16.5	17.9	17.0	18.4	19.1	16.5	17.9	17.0	18.4	19.1
3H	19.3	20.6	19.8	21.2	21.9	19.0	20.3	19.6	20.9	21.6	19.0	20.3	19.6	20.9	21.6
4H	20.6	21.8	21.2	22.5	23.2	20.4	21.6	21.0	22.2	23.0	20.4	21.6	21.0	22.2	23.0
6H	22.1	23.2	22.7	23.9	24.6	21.9	23.0	22.5	23.7	24.4	21.9	23.0	22.5	23.7	24.4
8H	22.9	24.0	23.5	24.6	25.4	22.7	23.8	23.3	24.4	25.2	22.7	23.8	23.3	24.4	25.2
12H	23.8	24.9	24.4	25.5	26.3	23.6	24.7	24.3	25.3	26.1	23.6	24.7	24.3	25.3	26.1
4H 2H	17.5	18.7	18.1	19.4	20.1	17.3	18.6	17.9	19.2	19.9	17.3	18.6	17.9	19.2	19.9
3H	20.2	21.3	20.9	22.0	22.7	20.0	21.1	20.7	21.8	22.5	20.0	21.1	20.7	21.8	22.5
4H	21.7	22.7	22.4	23.4	24.2	21.5	22.5	22.2	23.2	24.0	21.5	22.5	22.2	23.2	24.0
6H	23.4	24.3	24.1	25.0	25.8	23.2	24.1	23.9	24.8	25.6	23.2	24.1	23.9	24.8	25.6
8H	24.3	25.1	25.0	25.8	26.7	24.1	24.9	24.8	25.7	26.5	24.1	24.9	24.8	25.7	26.5
12H	25.3	26.1	26.0	26.8	27.7	25.2	25.9	25.9	26.7	27.5	25.2	25.9	25.9	26.7	27.5
8H 4H	22.3	23.1	23.0	23.8	24.7	22.1	23.0	22.8	23.7	24.5	22.1	23.0	22.8	23.7	24.5
6H	24.2	24.9	24.9	25.6	26.5	24.0	24.7	24.8	25.5	26.4	24.0	24.7	24.8	25.5	26.4
8H	25.3	25.9	26.0	26.7	27.6	25.1	25.8	25.9	26.5	27.4	25.1	25.8	25.9	26.5	27.4
12H	26.5	27.1	27.3	27.9	28.8	26.4	27.0	27.2	27.7	28.7	26.4	27.0	27.2	27.7	28.7
12H 4H	22.4	23.2	23.1	23.9	24.7	22.2	23.0	23.0	23.8	24.6	22.2	23.0	23.0	23.8	24.6
6H	24.4	25.0	25.1	25.8	26.7	24.3	24.9	25.0	25.7	26.6	24.3	24.9	25.0	25.7	26.6
8H	25.6	26.2	26.4	26.9	27.9	25.5	26.0	26.2	26.8	27.7	25.5	26.0	26.2	26.8	27.7
Variations with the observer position at spacings:															
S = 1.0H	+ 0.1 / - 0.1					+ 0.1 / - 0.1									
1.5H	+ 0.2 / - 0.3					+ 0.2 / - 0.3									
2.0H	+ 0.2 / - 0.4					+ 0.3 / - 0.4									

CIE Pub.117 Corrected 208.5 lm Total Lamp Luminous Flux. (8log(F/F0) = -5.4)

C Range: 0 - 360DEG  
 C Interval: 15.0DEG  
 Test Speed: HIGH  
 Temperature: 25.3DEG  
 Operators:  
 Test Date: 2013-09-28

γ Range: 0 - 180DEG  
 γ Interval: 1.0DEG  
 Test System: EVERFINE GO-2000A\_V1 SYSTEM V2.0.276  
 Humidity: 65.0%  
 Test Distance: 8.920m [K=1.0000]  
 Remarks:

**UTILIZATION FACTORS TABLE**

NAME: C37 5.5W 470LM WW	TYPE:	WEIGHT:
DIM.:	SPEC.:	SERIAL No.:
MFR.: MK	SUR.:	PROTECTION ANGLE:

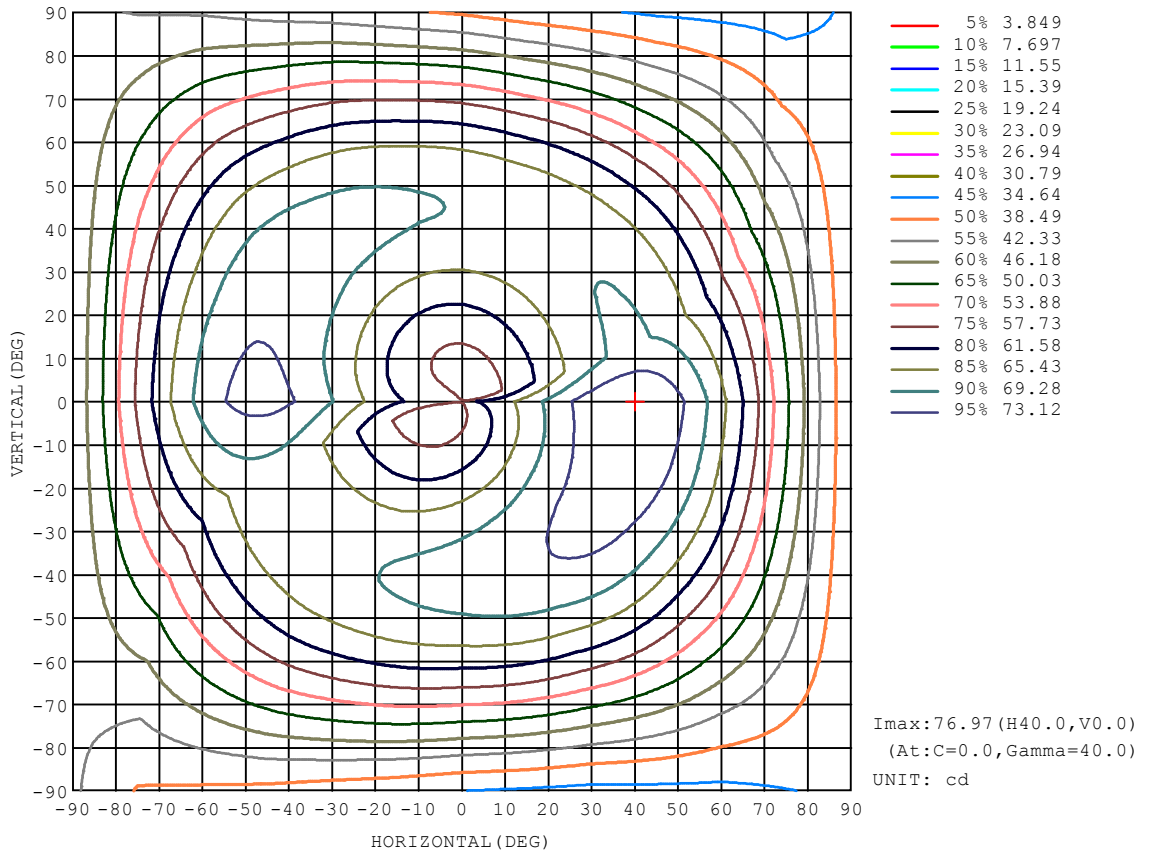
REFLECTANCE										
Ceiling	0.8	0.8	0.8	0.7	0.7	0.7	0.5	0.5	0.5	0
Walls	0.7	0.5	0.3	0.7	0.5	0.3	0.7	0.5	0.3	0
Working plane	0.2	0.2	0.2	0.2	0.2	0.2	0.2	0.2	0.2	0
ROOM INDEX	UTILIZATION FACTORS (PERCENT) $k(RI) \times RCR = 5$									
$k = 0.60$	98	68	50	95	67	50	90	65	49	33
0.80	118	87	67	114	85	66	108	81	64	45
1.00	136	104	83	131	101	82	122	103	79	58
1.25	152	121	99	146	117	97	136	111	93	69
1.50	164	134	112	158	130	110	146	122	104	78
2.00	182	154	133	174	149	129	160	139	122	93
2.50	193	167	147	185	161	143	169	150	134	103
3.00	202	179	160	193	172	155	177	159	145	111
4.00	214	194	177	204	186	171	186	172	159	123
5.00	222	204	189	212	196	182	193	180	169	131
ROOM INDEX	UF(total)									Direct
According to DIN EN 13032-2 2004			Suspended				SHRNOM = 1.25			

C Range: 0 - 360DEG  
 C Interval: 15.0DEG  
 Test Speed: HIGH  
 Temperature: 25.3DEG  
 Operators:  
 Test Date: 2013-09-28

$\gamma$  Range: 0 - 180DEG  
 $\gamma$  Interval: 1.0DEG  
 Test System: EVERFINE GO-2000A\_V1 SYSTEM V2.0.276  
 Humidity: 65.0%  
 Test Distance: 8.920m [K=1.0000]  
 Remarks:

ISOCANDELA DIAGRAM

NAME: C37 5.5W 470LM WW	TYPE:	WEIGHT:
DIM.:	SPEC.:	SERIAL No.:
MFR.: MK	SUR.:	PROTECTION ANGLE:

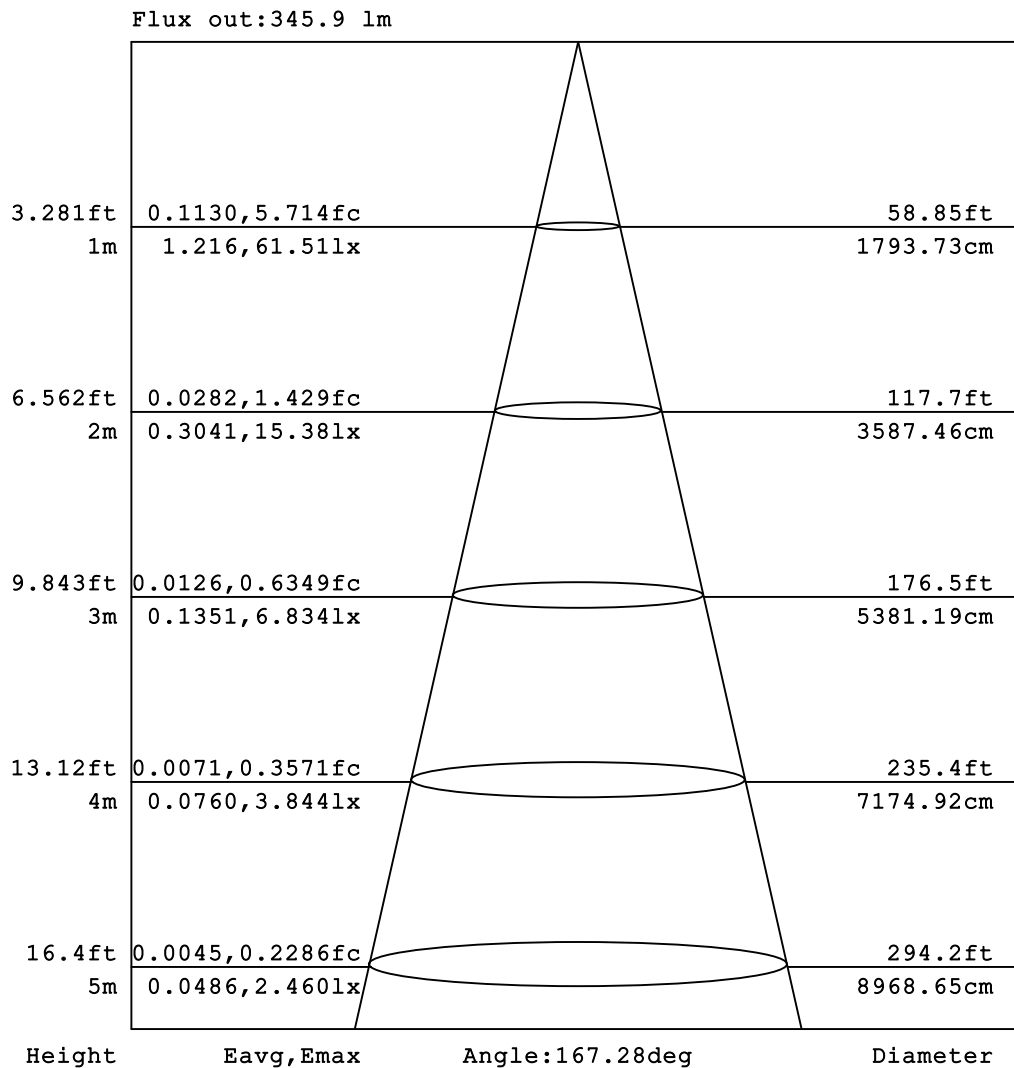


C Range: 0 - 360DEG  
 C Interval: 15.0DEG  
 Test Speed: HIGH  
 Temperature: 25.3DEG  
 Operators:  
 Test Date: 2013-09-28

γ Range: 0 - 180DEG  
 γ Interval: 1.0DEG  
 Test System: EVERFINE GO-2000A\_V1 SYSTEM V2.0.276  
 Humidity: 65.0%  
 Test Distance: 8.920m [K=1.0000]  
 Remarks:

AAI Figure

NAME: C37 5.5W 470LM WW	TYPE:	WEIGHT:
DIM.:	SPEC.:	SERIAL No.:
MFR.: MK	SUR.:	PROTECTION ANGLE:



Note: The Curves indicate the illuminated area and the average illumination when the luminaire is at different distance.

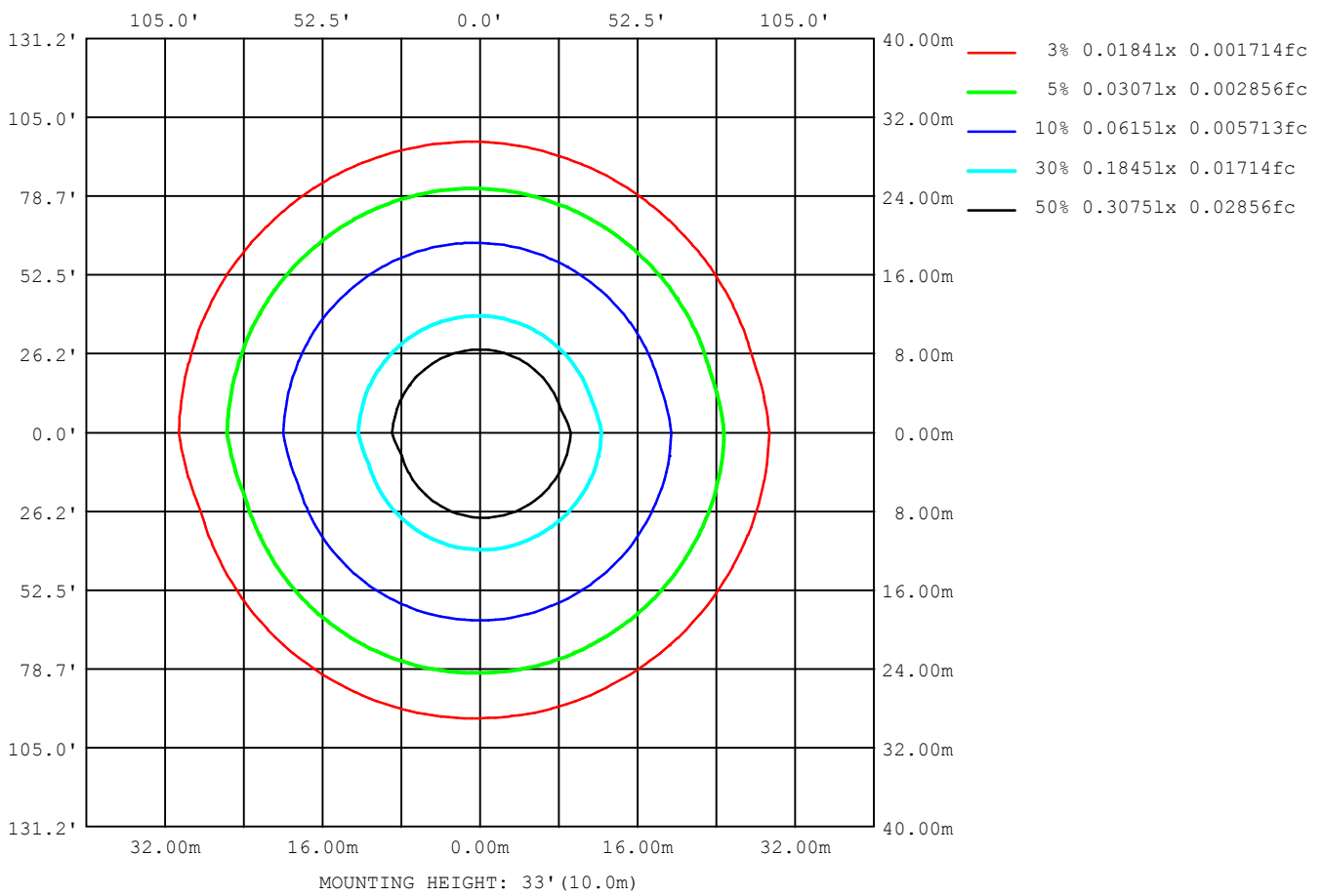
C Range: 0 - 360DEG  
 C Interval: 15.0DEG  
 Test Speed: HIGH  
 Temperature: 25.3DEG  
 Operators:  
 Test Date: 2013-09-28

γ Range: 0 - 180DEG  
 γ Interval: 1.0DEG  
 Test System: EVERFINE GO-2000A\_V1 SYSTEM V2.0.276  
 Humidity: 65.0%  
 Test Distance: 8.920m [K=1.0000]  
 Remarks:



ISOLUX DIAGRAM

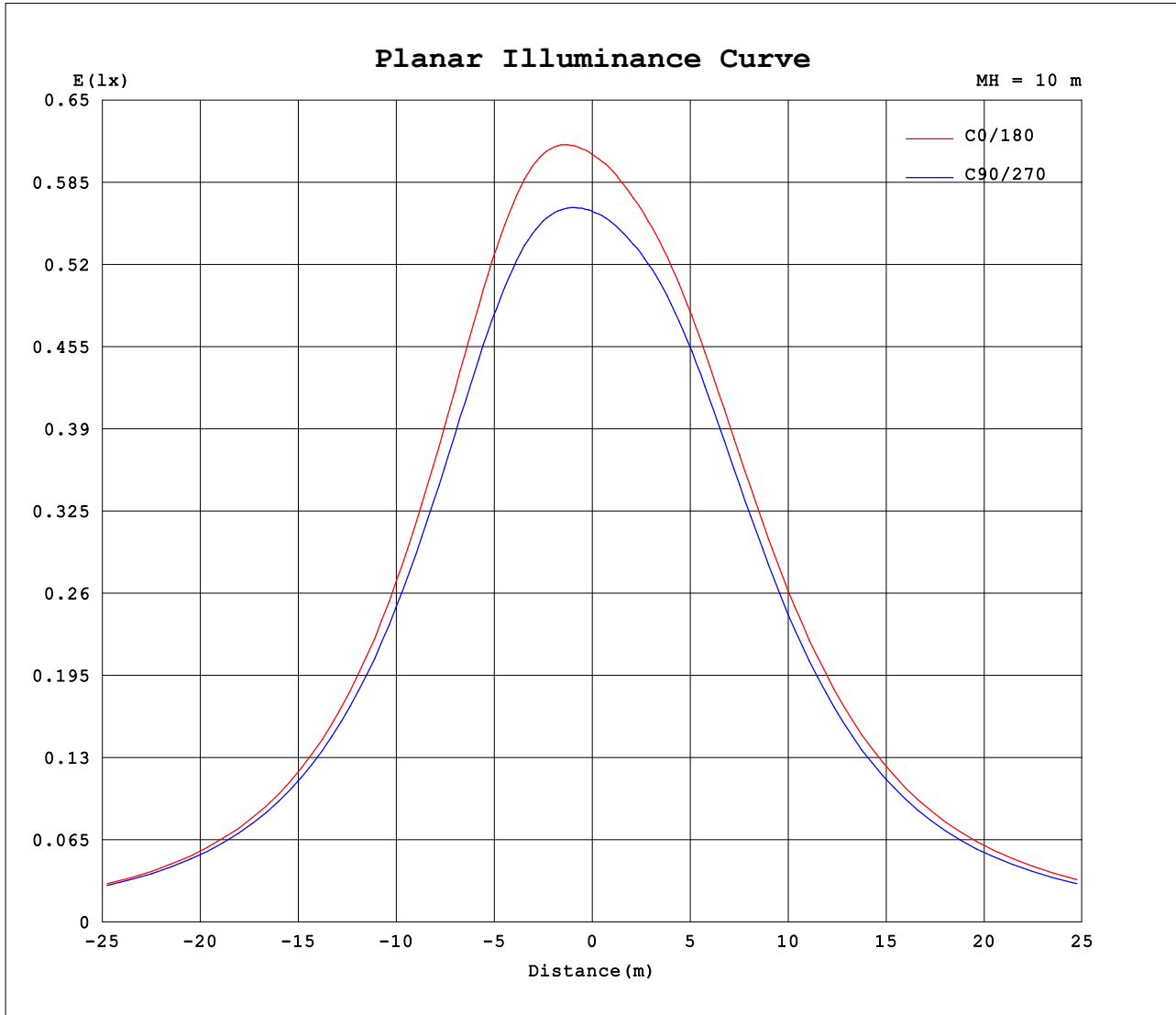
NAME: C37 5.5W 470LM WW	TYPE:	WEIGHT:
DIM.:	SPEC.:	SERIAL No.:
MFR.: MK	SUR.:	PROTECTION ANGLE:



C Range: 0 - 360DEG  
 C Interval: 15.0DEG  
 Test Speed: HIGH  
 Temperature: 25.3DEG  
 Operators:  
 Test Date: 2013-09-28

γ Range: 0 - 180DEG  
 γ Interval: 1.0DEG  
 Test System: EVERFINE GO-2000A\_V1 SYSTEM V2.0.276  
 Humidity: 65.0%  
 Test Distance: 8.920m [K=1.0000]  
 Remarks:

Planar Illuminance Curve



C Range: 0 - 360DEG  
 C Interval: 15.0DEG  
 Test Speed: HIGH  
 Temperature: 25.3DEG  
 Operators:  
 Test Date: 2013-09-28

$\gamma$  Range: 0 - 180DEG  
 $\gamma$  Interval: 1.0DEG  
 Test System: EVERFINE GO-2000A\_V1 SYSTEM V2.0.276  
 Humidity: 65.0%  
 Test Distance: 8.920m [K=1.0000]  
 Remarks:

LUMINOUS DISTRIBUTION INTENSITY DATA

NAME: C37 5.5W 470LM WW	TYPE:	WEIGHT:
DIM.:	SPEC.:	SERIAL No.:
MFR.: MK	SUR.:	PROTECTION ANGLE:

Table--1

UNIT: cd

C (DEG) \ γ (DEG)	0	15	30	45	60	75	90	105	120	135	150	165	180	195	210	225	240	255	270
0	60.8	59.7	58.8	58.1	57.3	56.8	56.2	55.9	55.6	55.4	55.3	55.2	60.8	59.7	58.8	58.1	57.3	56.8	56.2
5	62.1	61.2	60.3	59.5	58.7	57.9	57.2	56.5	55.9	55.6	55.2	55.1	60.4	59.2	58.3	57.6	56.9	56.4	56.1
10	64.3	63.4	62.6	61.8	60.8	59.8	58.9	57.9	57.0	56.4	56.0	55.7	60.8	59.4	58.5	57.7	57.2	56.9	56.8
15	67.1	66.3	65.5	64.6	63.5	62.4	61.2	60.0	58.9	58.1	57.5	57.1	62.1	60.6	59.7	58.9	58.4	58.2	58.3
20	70.1	69.3	68.5	67.5	66.4	65.1	63.8	62.5	61.2	60.3	59.6	59.1	64.2	62.6	61.6	60.9	60.4	60.3	60.4
25	72.9	72.2	71.2	70.3	69.1	67.8	66.4	65.0	63.7	62.7	62.0	61.5	66.7	65.1	64.1	63.3	62.8	62.7	62.8
30	75.2	74.5	73.4	72.5	71.2	70.0	68.7	67.3	66.0	65.1	64.4	64.0	69.4	67.7	66.7	65.8	65.4	65.2	65.2
35	76.6	75.9	74.7	73.8	72.5	71.5	70.2	69.1	67.9	67.0	66.4	66.0	71.8	70.1	69.1	68.2	67.6	67.3	67.3
40	77.0	76.1	75.0	74.1	72.9	71.9	70.8	70.0	69.0	68.3	67.8	67.5	73.5	71.9	70.9	69.9	69.3	68.9	68.7
45	76.1	75.2	73.9	73.1	72.0	71.3	70.5	69.8	69.2	68.7	68.3	68.1	74.5	72.8	71.9	70.8	70.2	69.5	69.1
50	74.0	73.0	71.7	71.0	70.0	69.6	68.9	68.7	68.3	68.1	67.9	67.7	74.3	72.7	71.8	70.8	70.0	69.2	68.6
55	70.7	69.8	68.5	67.9	67.0	66.8	66.4	66.5	66.4	66.4	66.3	66.3	73.0	71.5	70.7	69.6	68.8	67.8	67.0
60	66.5	65.6	64.3	63.8	63.0	63.1	62.9	63.3	63.5	63.8	63.9	63.9	70.6	69.3	68.6	67.4	66.5	65.4	64.4
65	61.6	60.6	59.4	59.0	58.5	58.7	58.7	59.4	59.8	60.4	60.5	60.7	67.3	66.0	65.4	64.2	63.3	62.0	61.0
70	56.3	55.3	54.2	53.9	53.4	53.8	54.0	55.0	55.6	56.3	56.5	56.7	63.1	61.9	61.4	60.2	59.4	58.0	56.8
75	50.8	49.8	48.8	48.6	48.3	48.7	49.1	50.2	50.9	51.7	52.0	52.3	58.3	57.3	56.9	55.7	54.8	53.4	52.2
80	45.3	44.4	43.5	43.3	43.1	43.7	44.1	45.2	46.1	46.9	47.3	47.6	53.2	52.3	52.0	50.8	50.0	48.6	47.5
85	40.1	39.3	38.4	38.4	38.1	38.8	39.3	40.4	41.2	42.1	42.5	42.9	48.0	47.3	46.9	45.8	45.1	43.8	42.6
90	35.2	34.5	33.7	33.7	33.5	34.2	34.7	35.8	36.6	37.5	37.9	38.2	42.9	42.2	42.0	41.0	40.3	39.0	38.0
95	30.8	30.2	29.5	29.5	29.3	30.0	30.4	31.5	32.3	33.1	33.5	33.8	38.0	37.4	37.2	36.3	35.7	34.5	33.5
100	26.8	26.3	25.6	25.6	25.6	26.1	26.6	27.6	28.3	29.1	29.4	29.7	33.5	32.9	32.8	32.0	31.5	30.4	29.5
105	23.2	22.8	22.2	22.2	22.2	22.7	23.1	24.0	24.7	25.4	25.8	26.0	29.3	28.8	28.8	28.0	27.6	26.6	25.8
110	20.1	19.7	19.2	19.2	19.2	19.6	20.0	20.8	21.5	22.1	22.4	22.7	25.6	25.2	25.1	24.5	24.0	23.2	22.5
115	17.2	16.8	16.4	16.4	16.4	16.9	17.3	18.0	18.6	19.1	19.4	19.6	22.2	21.9	21.8	21.3	20.9	20.1	19.5
120	14.6	14.3	13.9	13.9	13.9	14.3	14.7	15.4	15.9	16.4	16.7	16.9	19.2	18.9	18.8	18.4	18.0	17.3	16.7
125	12.2	11.9	11.6	11.6	11.7	12.0	12.4	13.0	13.5	14.0	14.2	14.4	16.4	16.1	16.1	15.7	15.4	14.8	14.3
130	10.0	9.77	9.49	9.51	9.57	9.89	10.2	10.8	11.3	11.7	12.0	12.1	13.8	13.7	13.6	13.3	13.0	12.5	12.0
135	8.02	7.78	7.55	7.57	7.64	7.93	8.26	8.77	9.22	9.61	9.84	9.99	11.5	11.4	11.4	11.1	10.8	10.4	9.89
140	6.21	6.00	5.81	5.83	5.91	6.16	6.47	6.92	7.34	7.69	7.90	8.03	9.31	9.23	9.22	8.98	8.77	8.37	7.94
145	4.62	4.41	4.29	4.30	4.38	4.59	4.87	5.27	5.65	5.95	6.15	6.26	7.31	7.27	7.28	7.09	6.90	6.56	6.18
150	3.25	3.09	3.01	3.00	3.09	3.25	3.51	3.83	4.17	4.41	4.59	4.67	5.54	5.54	5.55	5.41	5.22	4.95	4.62
155	2.17	2.03	1.98	1.98	2.05	2.16	2.38	2.63	2.91	3.10	3.26	3.32	4.01	4.02	4.02	3.92	3.78	3.57	3.28
160	1.39	1.27	1.26	1.24	1.31	1.38	1.55	1.70	1.93	2.06	2.19	2.22	2.73	2.77	2.76	2.70	2.57	2.42	2.22
165	0.89	0.78	0.81	0.76	0.84	0.85	0.98	1.07	1.23	1.29	1.41	1.41	1.74	1.79	1.76	1.75	1.65	1.57	1.42
170	0.61	0.59	0.61	0.61	0.57	0.63	0.57	0.69	0.73	0.76	0.86	0.83	1.03	0.95	0.86	0.94	0.96	0.96	0.78
175	0.60	0.60	0.58	0.58	0.56	0.58	0.56	0.59	0.57	0.62	0.57	0.61	0.62	0.60	0.65	0.58	0.63	0.57	0.59
180	0.59	0.60	0.57	0.57	0.56	0.56	0.56	0.56	0.56	0.56	0.56	0.56	0.62	0.60	0.59	0.58	0.57	0.57	0.56

C Range: 0 - 360DEG  
 C Interval: 15.0DEG  
 Test Speed: HIGH  
 Temperature: 25.3DEG  
 Operators:  
 Test Date: 2013-09-28

γ Range: 0 - 180DEG  
 γ Interval: 1.0DEG  
 Test System: EVERFINE GO-2000A\_V1 SYSTEM V2.0.276  
 Humidity: 65.0%  
 Test Distance: 8.920m [K=1.0000]  
 Remarks:

LUMINOUS DISTRIBUTION INTENSITY DATA

NAME: C37 5.5W 470LM WW	TYPE:	WEIGHT:
DIM.:	SPEC.:	SERIAL No.:
MFR.: MK	SUR.:	PROTECTION ANGLE:

Table--2

UNIT: cd

C (DEG) γ (DEG)	285	300	315	330	345														
0	55.9	55.6	55.4	55.3	55.2														
5	56.0	56.0	56.0	56.1	56.1														
10	56.9	57.1	57.4	57.7	57.9														
15	58.6	59.0	59.6	59.9	60.3														
20	60.9	61.4	62.0	62.5	63.0														
25	63.3	63.9	64.6	65.1	65.6														
30	65.6	66.2	66.8	67.3	67.8														
35	67.5	67.9	68.3	68.9	69.3														
40	68.6	68.8	69.1	69.5	69.9														
45	68.8	68.7	68.8	69.0	69.4														
50	67.9	67.5	67.4	67.5	67.8														
55	66.0	65.3	64.9	64.9	65.0														
60	63.1	62.2	61.6	61.5	61.5														
65	59.4	58.4	57.6	57.3	57.2														
70	55.1	54.0	53.0	52.7	52.4														
75	50.5	49.3	48.2	47.8	47.5														
80	45.7	44.4	43.3	42.9	42.5														
85	40.9	39.7	38.6	38.1	37.7														
90	36.3	35.1	34.1	33.6	33.2														
95	32.0	30.9	30.0	29.5	29.1														
100	28.1	27.1	26.2	25.8	25.4														
105	24.5	23.6	22.8	22.4	22.1														
110	21.3	20.5	19.8	19.4	19.1														
115	18.5	17.7	17.0	16.7	16.4														
120	15.9	15.2	14.6	14.2	14.0														
125	13.5	12.8	12.3	12.0	11.7														
130	11.3	10.7	10.2	9.88	9.69														
135	9.24	8.69	8.23	7.97	7.80														
140	7.36	6.88	6.47	6.22	6.08														
145	5.69	5.25	4.90	4.66	4.55														
150	4.21	3.82	3.54	3.33	3.26														
155	2.96	2.63	2.42	2.24	2.19														
160	1.98	1.71	1.58	1.43	1.41														
165	1.26	1.06	1.00	0.88	0.89														
170	0.67	0.66	0.55	0.62	0.55														
175	0.56	0.58	0.55	0.57	0.55														
180	0.56	0.55	0.55	0.55	0.54														

C Range: 0 - 360DEG  
 C Interval: 15.0DEG  
 Test Speed: HIGH  
 Temperature: 25.3DEG  
 Operators:  
 Test Date: 2013-09-28

γ Range: 0 - 180DEG  
 γ Interval: 1.0DEG  
 Test System: EVERFINE GO-2000A\_V1 SYSTEM V2.0.276  
 Humidity: 65.0%  
 Test Distance: 8.920m [K=1.0000]  
 Remarks: