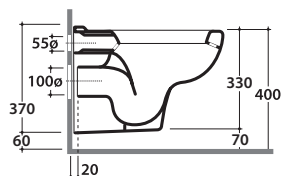
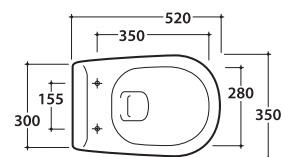


# ARIANNA VASO SOSPESO A5S02BI

CE EN 997:2015

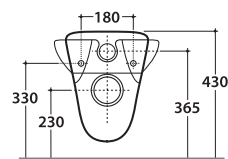
# GLOBO



Scarico ottimizzato a 4/2,6 litri  
Drain 4/2,6 lt

Cod. **A5S02BI**

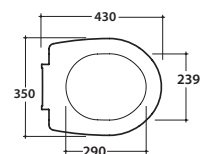
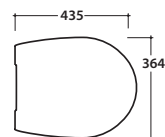
Vaso sospeso 52.35 h37 cm. Scarico 4 / 2,6 Lt. Fissaggi non inclusi. Peso 15 Kg  
Wall-hung Wc 52.35 h37 cm. Drain 4 / 2,6 Lt. Fixing kit not included. Weight 15 Kg



Trattamento antibatterico per sedili in  
versione bianco lucido  
Antibacterial treatment on toilet seats  
in shiny white

Cod. **A5N19BI**

Coprivaso in duroplast con chiusura tradizionale. Peso 3 Kg  
Duroplast seat-cover with traditional closing system. Weight 3 Kg



Cod. **PU001**

Protezione antiurto e acustica.  
Acoustic and crash protection.



Cod. **FI002**

Staffa di fissaggio a "L". Peso 2,5 Kg  
Fixing brackets for W/H sanitary. Weight 2,5 Kg