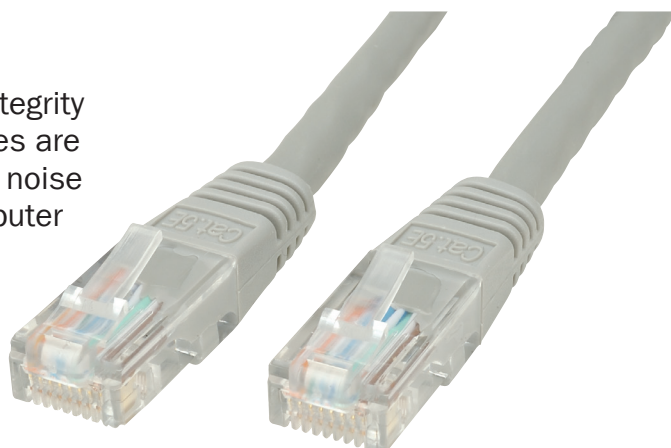


Product Description

Category 5e cable is a twisted pair high signal integrity cable type often referred to as Cat5e. Most cables are unshielded, relying on the twisted pair design for noise rejection, some are shielded. Often used in computer networks such as Ethernet

- UTP (Unshielded Twisted Pair)
- Cat5e
- Moulded
- 26AWG 4PR
- 26AWG CM (UL) C(UL) 4P
- ISO/IEC 11801 AND TIA/EIA 568B.2



Cable Length	Colour	Order code
0.5m	Grey	19-4380
0.5m	Blue	19-4386
0.5m	Green	19-4910
1m	Grey	19-4388
1m	Yellow	19-4392
1m	Blue	19-4394
1m	Green	19-4921
2m	Grey	19-4396
2m	Yellow	19-4400
2m	Blue	19-4402
3m	Grey	19-4404
3m	Blue	19-4410
3m	Green	19-4923
5m	Grey	19-4412
5m	Blue	19-4418
10m	Yellow	19-4424
10m	Blue	19-4426
10m	Grey	19-4420
10m	Green	19-4925