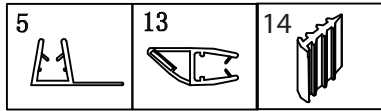
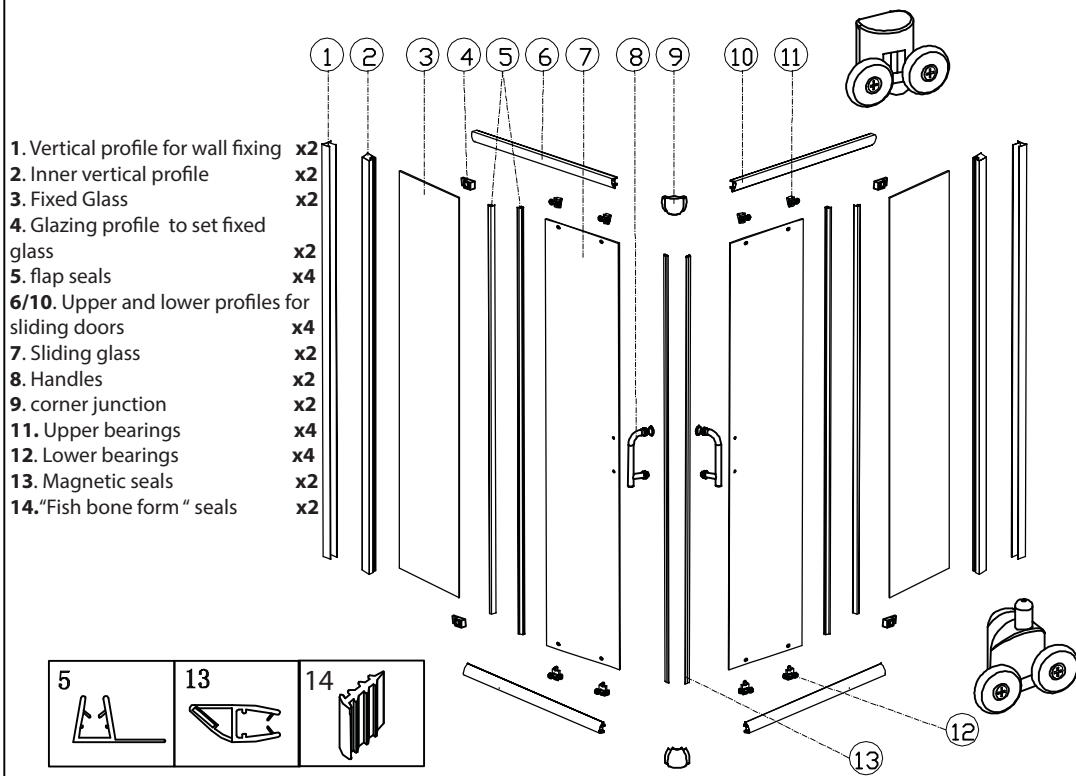
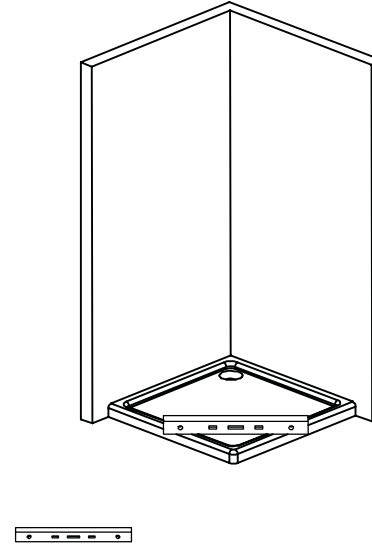


INSTRUCTION MANUAL SHOWER CABIN SQUARE/RECTANGULAR

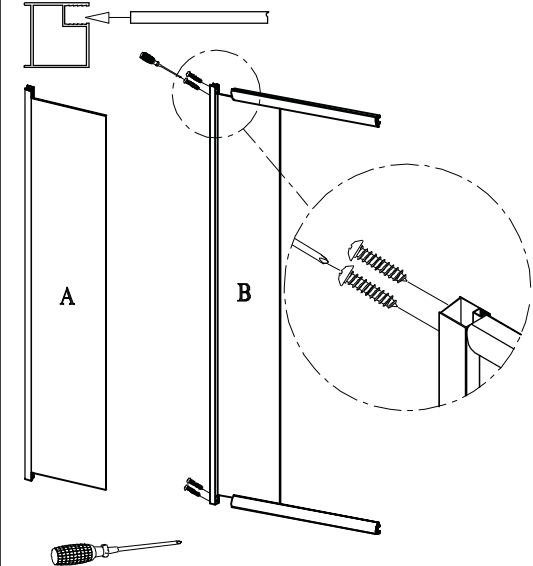
Rev B - 01/2018



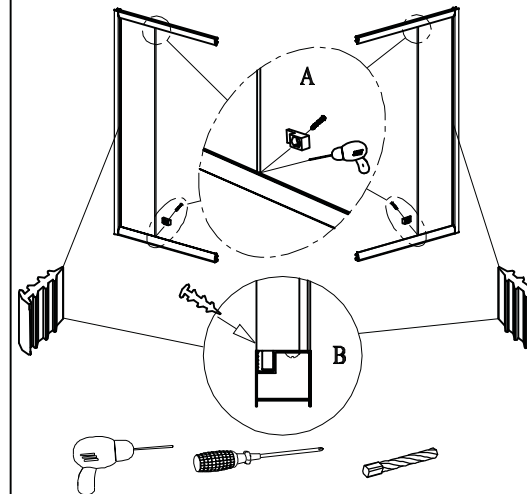
1. Before assembling the box, fix the shower tray with the help of a level.
 (SHOWER TRAY NOT INCLUDED)



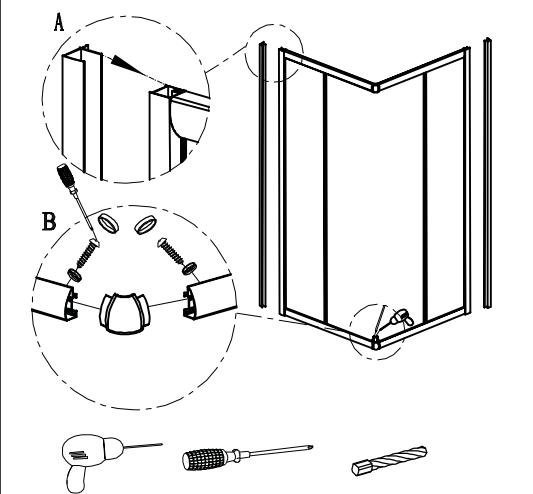
2. A. Insert the fixed glass in the hole of the inner vertical profile (pic A)
 B. Assemble the upper guide with the glass frame with the screws 4*45 (pic B)



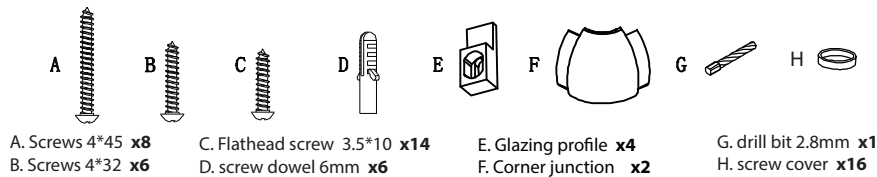
3. (1) Make in position the glazing profile and make a hole with the drill using a 2.8 fixing screw and then assemble it with the 3.5*10 screws (pic A)
 (2) The next step is to put the Corner profile seal in the inner part of the Box" fishbone seals" (pic B)



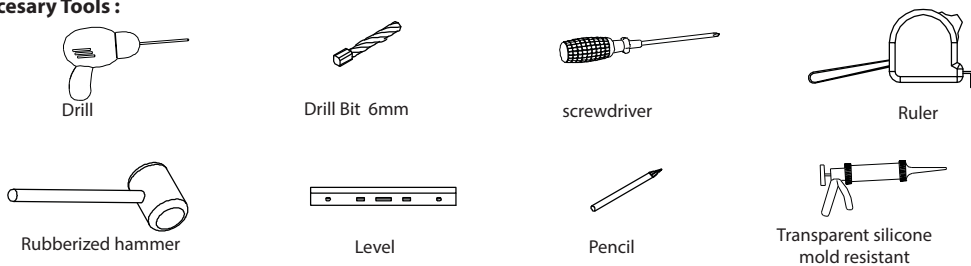
4. (1) combine the vertical profile fixed to the wall with the vertical profile to which the glass has been installed (pic A).
 (2) join the uprights with the corner junction (drilling with the drill for 7mm, being careful not to pierce the external part of the profile) and then drill the screws 3.5*10 with its caps. Use the screw cover (Pic B)



Metalware Included:



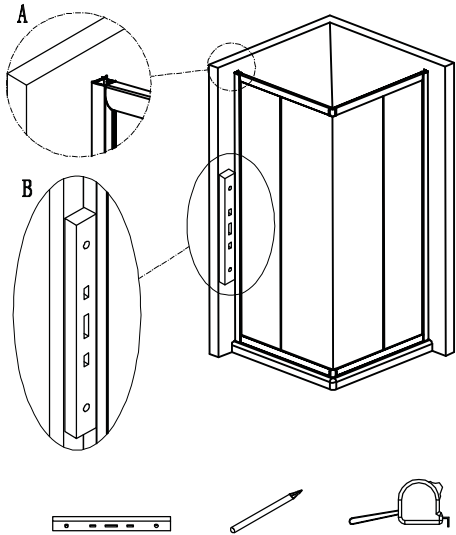
Necessary Tools:



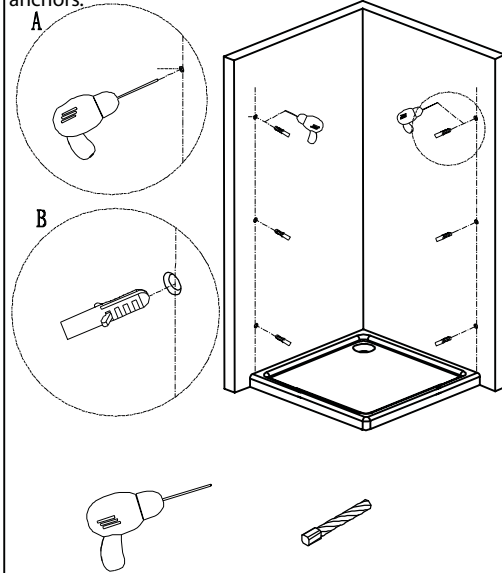
INSTRUCTION MANUAL SHOWER CABIN SQUARE/RECTANGULAR

Rev B - 01/2018

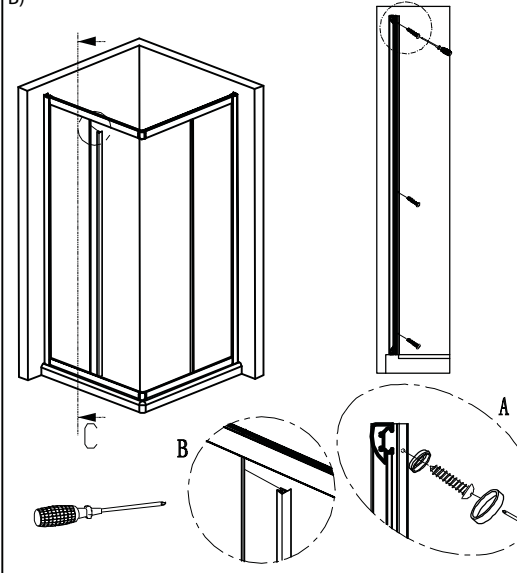
5. Adjust the inner vertical profile with the other profiles and fix it on the wall with 10mm screws using the present holes



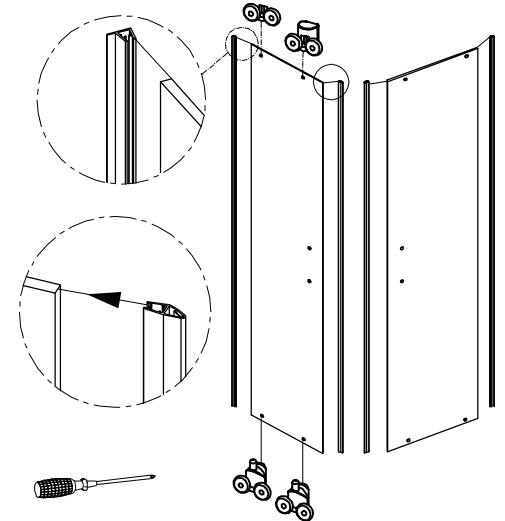
6. Prepare the vertical profile for the wall fixing and then put it on the shower tray, after taking the right measures, make some drill holes using a 6 mm drill bit and insert wall anchors.



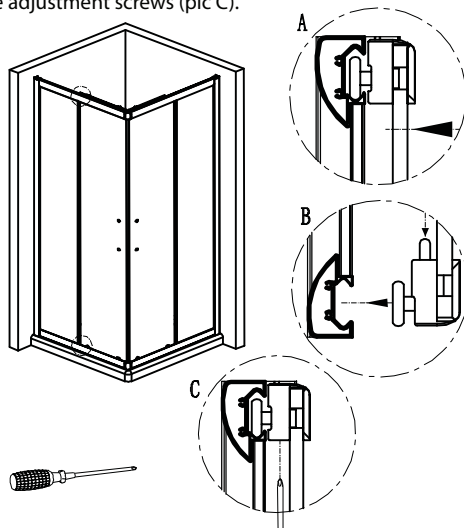
7. Fix the vertical profile with the included screws 4*32(pic A) and then insert, at the end of fixed glass, the flap seal. The flap must be placed within the shower enclosure. (pic B)



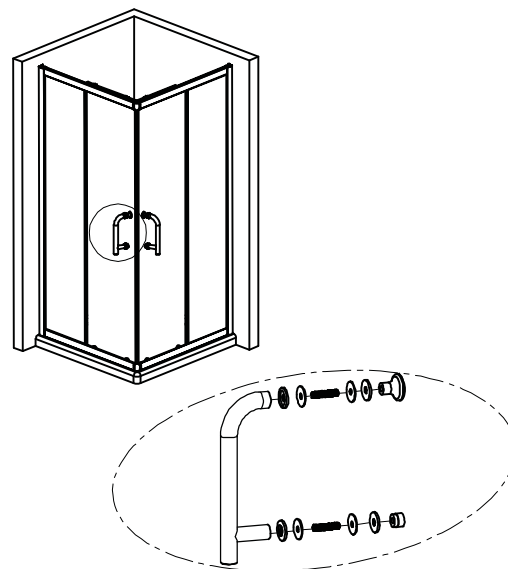
8. (1) Install the upper and lower ball bearings.
(2) Apply the magnetized Seals to avoid water infiltration.
(3) Put the Flap Seal on the Glass (in external position)



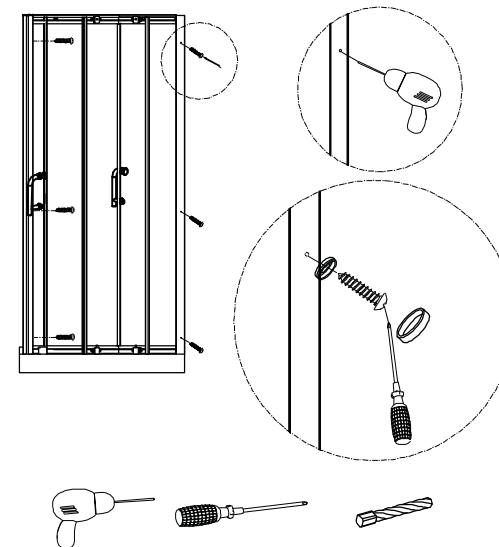
9. (1) Insert the upper bearings inside the upper horizontal profile (pic A).
(2) Press the small button of the lower bearings and place them at the bottom rail (pic B).
(3) Adjust the upper bearings by moving/regulating on the adjustment screws (pic C).



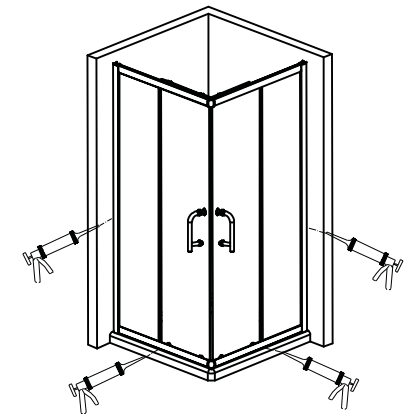
10. Install the handles on the sliding door.



11. (1) Considering the holes previously made on the wall profiles, drill the structure and fix the whole with the relative screws 3.5*10 applying subsequently the screw caps.

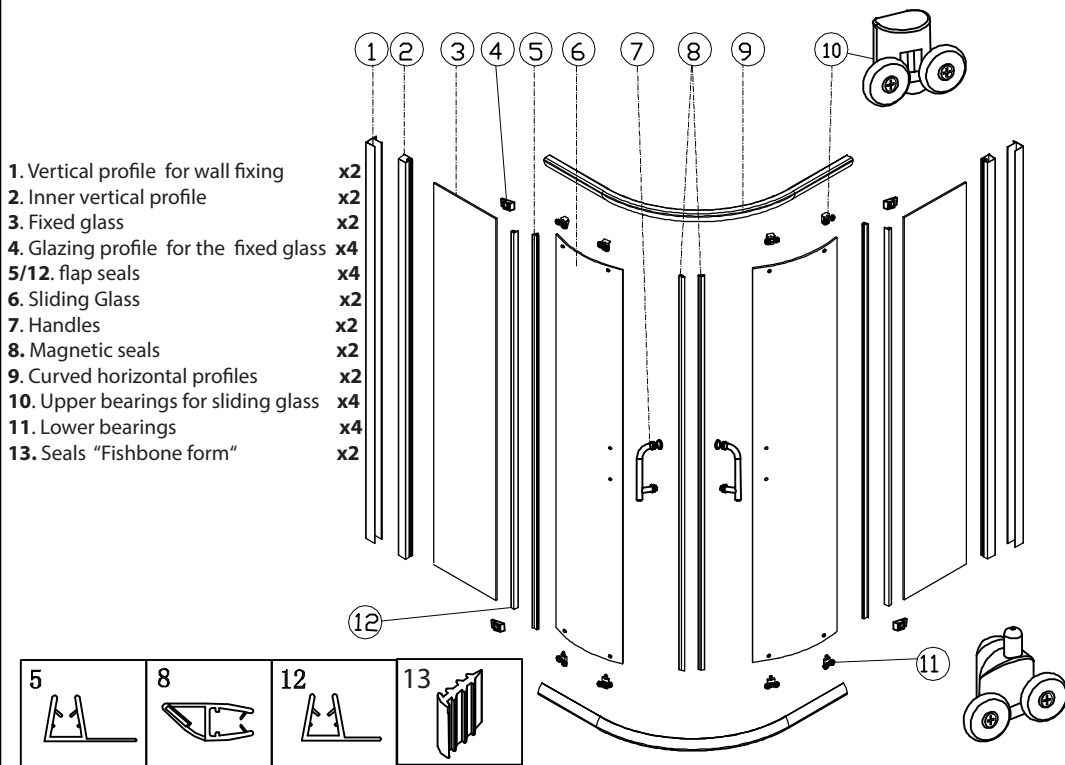


12. Complete the job by applying the silicone to the whole structure

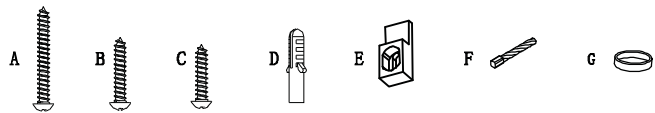


INSTRUCTION MANUAL SHOWER CABIN SEMICIRCULAR

Rev B - 01/2018



Metalware Included:



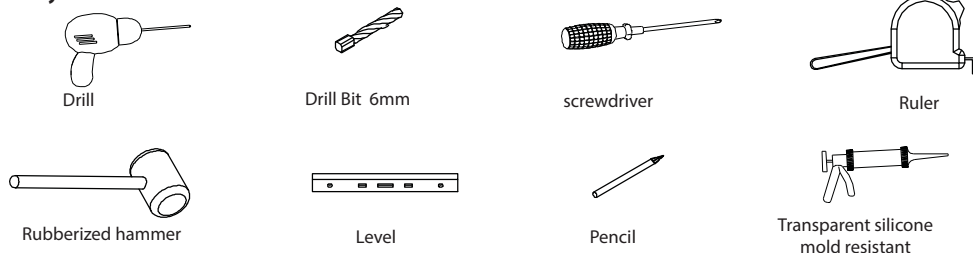
A. Screws 4*45 **x8**
B. Screws 4*32 **x6**

C. Flathead screw 3.5*10 **x10**
D. screw dowel 6mm **x6**

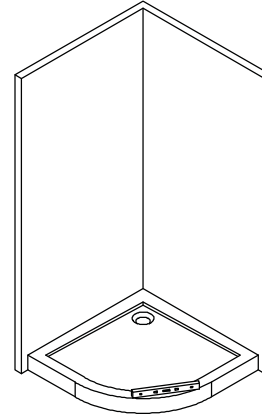
E. Glazing profile **x4**
F. drill bit 2.8mm **x1**

G. screw cover **x12**

Necessary Tools :



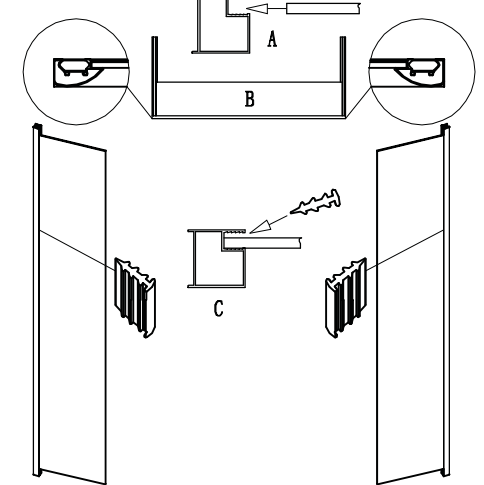
1. before assembling the box, fix the shower tray with the help of a level.
(SHOWER TRAY NOT INCLUDED)



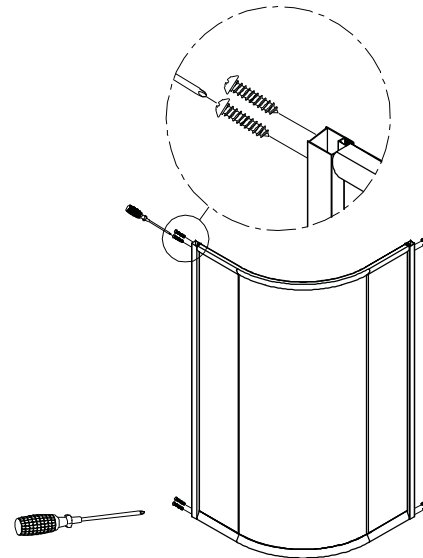
2. A. Insert the fixed glass in the hole of the vertical profile (Pic A)

B. Put the glass in the centre of the glazing profile so that there stay on the same space between the upper and the lower space (Pic B)

C. The next step is to put the Corner profile seal (fishbone form) in the inner part of the Box (pic C)

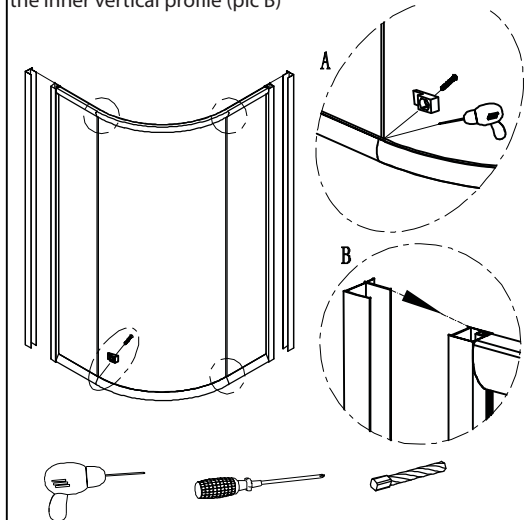


3. Fix the vertical profile with the horizontal guide and then screw it in the frame 4*45



4. (1) place the glazing beads and make a hole with the drill, using a 2.8mm. bit and tighten the glazing beads with the screws 3.5*10 (pic A).

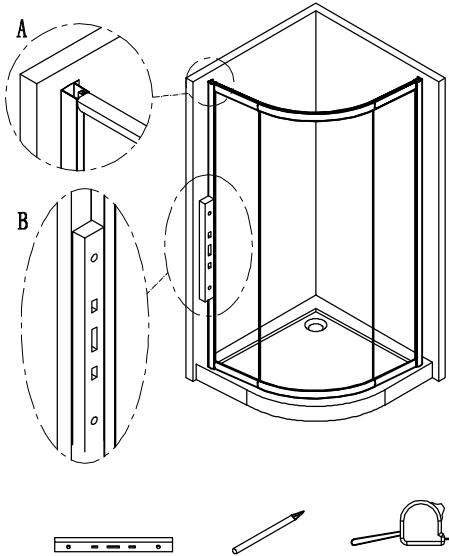
(2) assemble the vertical profile for wall mounting with the inner vertical profile (pic B)



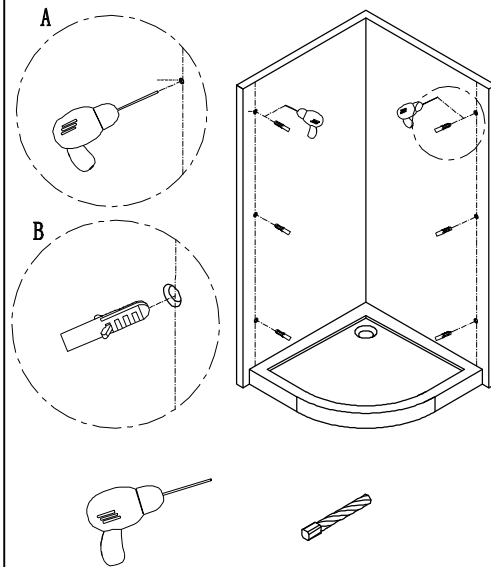
INSTRUCTION MANUAL SHOWER CABIN SEMICIRCULAR

Rev B - 01/2018

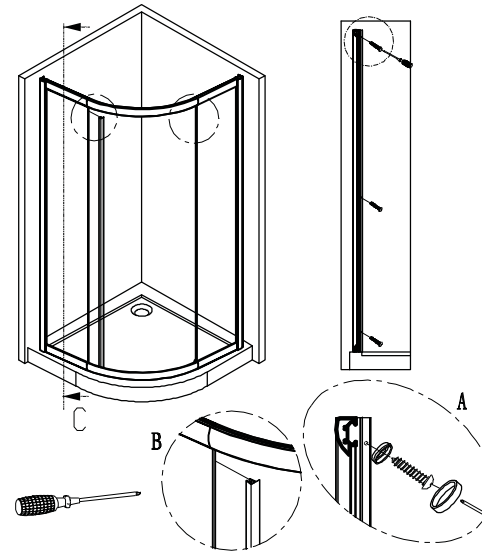
5. Adjust the inner vertical profile with the other profiles and fix it on the wall with 10mm screws using the present holes



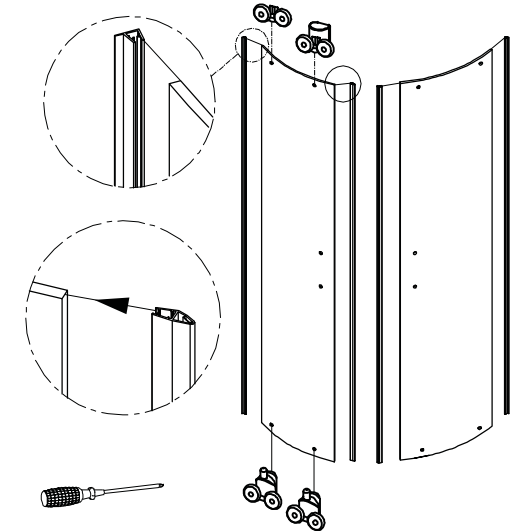
6. Prepare the vertical uprights lead to the wall on the shower tray, after taking the right measures, make some drill holes using a 6mm drill bit and insert wall anchors.



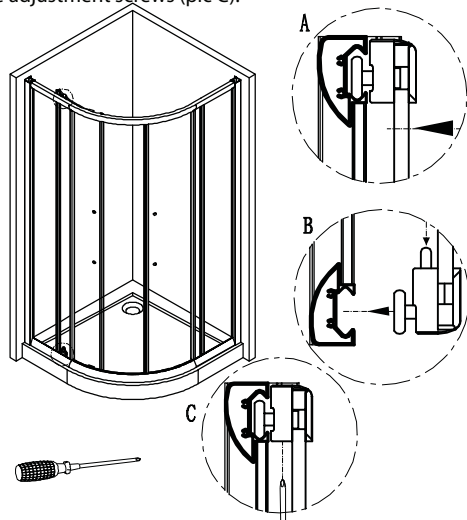
7. Secure the profile with the supplied screws 4*32 (pic A) and then insert, at the end of fixed glass, the flap seal. The flap must be placed within the shower enclosure (pic B).



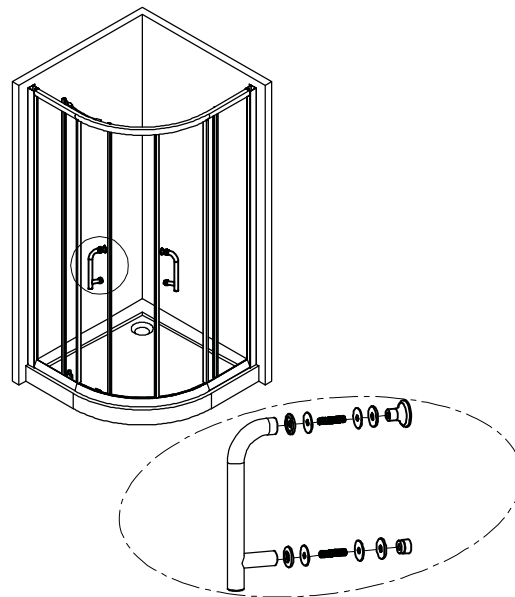
8. (1) Install the upper and lower ball bearings.
(2) Apply the magnetic Seals to avoid water infiltration.
(3) Put the Flap Seal on the Glass (in external position)



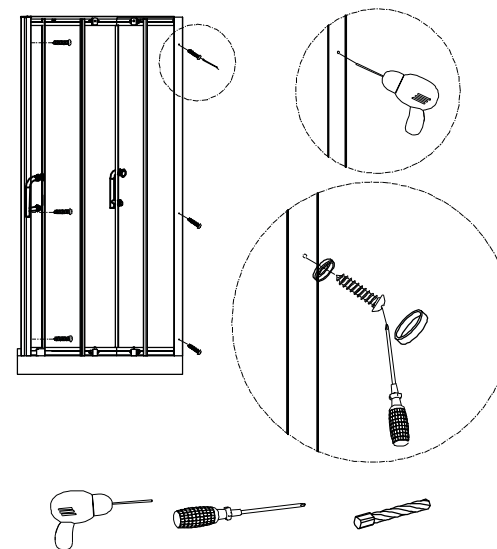
9. (1) Insert the upper bearings inside the upper horizontal mast (pic A).
(2) Press the small button of the lower bearings and place them at the bottom rail (pic B).
(3) Adjust the upper bearings by moving/regulating on the adjustment screws (pic C).



10. Install the handles on the sliding door.



11. (1) Considering the holes previously made on the wall profiles, drill the structure and fix the whole with the relative screws 3.5*10 applying subsequently the screw caps.



12. Complete the job by applying the silicone to the whole structure.

