



**HESTRA
PLATTA**



2020



**HESTRA
PLATTAN**

**Wood
Look**



**HESTRA®
PLATTAN**

**Wood
Look**



Woodlook - the design tile that looks like wood

A new shape of floor tiles

Hestra design click tiles in the WOODLOOK collection are not trying to replace wooden flooring – but rather we are presenting a wear-free alternative that impresses with its low maintenance requirements, easier installation and soft tread comfort. Let your imagination run wild and create your own favourite pattern.

They can be installed both indoors and outdoors within a temperature range of between -30 and +70 degrees Celsius and are fully UV-resistant.

Available as accessories: Corner and end strips for a smooth transition to the subfloor.



Colour Range WOODLOOK



Iron Ore -06



Dark Oak -38









Elegance -01



Mahogany -48



Assortment WOODLOOK

Floor Tile (11 pieces/pack =1m ²)	End strip (single)	End strip (2 pieces/pack)	End strip (5 pieces/pack)	Corner strip (single)	Corner strip (2 pieces/pack)
					
Available in colour range WOODLOOK - replace XX with colour code					
6310-1600-XX	6320-1610-XX	6325-0002-XX	6325-0005-XX	6335-1610-XX	6340-0002-XX





HESTRA[®]
PLATTAN

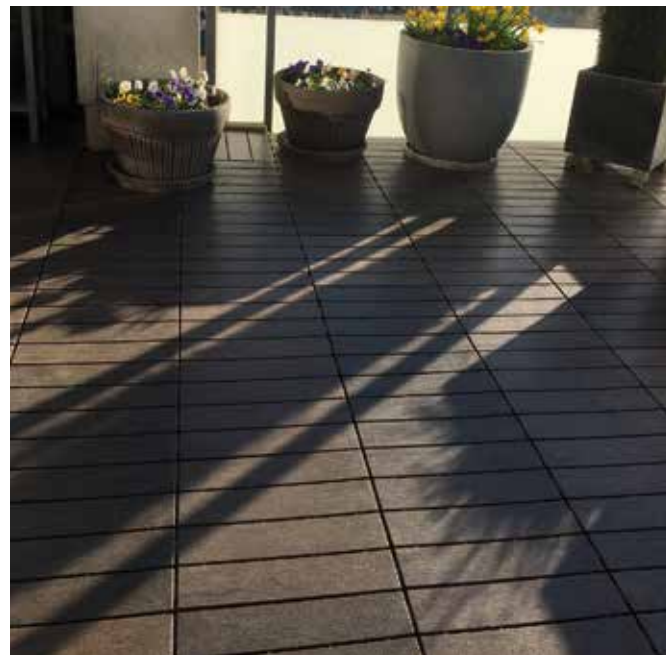
**Wood
Look**



**HESTRA[®]
PLATTAN**

**Wood
Look**





Qualities

Easy assemblage	●
Draining	●
Temperature sustainable in large installations	
UV stabile	●
Indoor enviroment	●
Outdoor enviroment	●
Easy to maintain	●
Ergonomic	●
Sound absorbing	●
10 year function warranty	●

Accessories

End strip	●
Corner strip	●
Marking strip	
Cable strip	
Boltset for Garage installation	
De-mounting tool	

Suggestions of possible use

Domestic	Public
Terrace	Gym
Balcony	Store
Hobby room	Office
Wash room	Stairwell
Garage	Storage
Storage	Workshop
Basement	Workbench
Shower	Stock
Playhouse	Department Store
Marquee	Exhibition
Greenhouse	Display
Camping tent	Merchandising
Pool area	Boatdeck
Boat	Depot
Sauna	Event

Technical information

Floor tiles

Measurement	300 x 300 x 12 mm
Weight/ tile	248 gram
Amount per pack	11 pcs = 1 m ²
Handles even load	110 ton/m ²

End strip

Measurement	300 x 55 x 12 mm
Amount per pack	5 pcs = 150 cm

Corner strip

Measurement	355 x 55 x 12 mm
Amount per pack	2 pcs = 71 cm

Marking strip

Measurement	355 x 75 x 12 mm
Amount per pack	5 pcs = 150 cm

Cable strip

Measurement	355 x 75 x 12mm
Amount per pack	5 pcs = 150 cm

Material

Recyclable polypropylene plastic (PP), approved by REACH directions. Colour approved by REACH directions with UV-stabilizer for a long-lasting outdoor use. Tolerance of most chemicals.

Packaging

Recyclable carton.

