

# NORSE

## PROFESSIONAL OPERATION MANUAL



### SK125 Electric Pressure Washer



Read this manual carefully before use and keep it for future reference. Failure to do so may result in injury, property damage and may void the warranty.

Products covered by this manual may vary in appearance, assembly, inclusions, specifications, description or packaging.

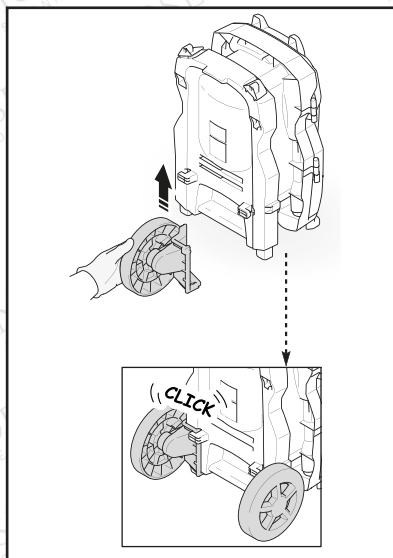
# Contents

2	Contents
3	Quick Start Guide
5	Parts guide
7	General cleaning
8	Detergent
9	Drawing from a barrel
10	Patio brush and triangle brush
10	Post operation / storage
11	Safety Symbols
11	Safety and Warning Information
13	Troubleshooting
13	Technical Data
14	Disposal Regulations
14	Wiring diagram
15	CE Certification

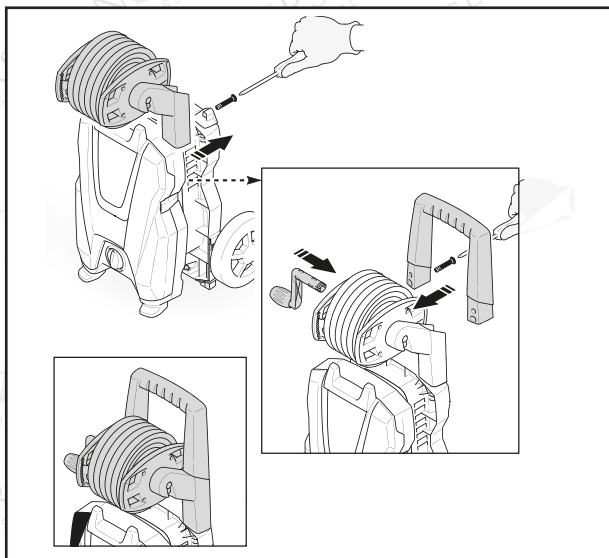
# Quick Start Guide



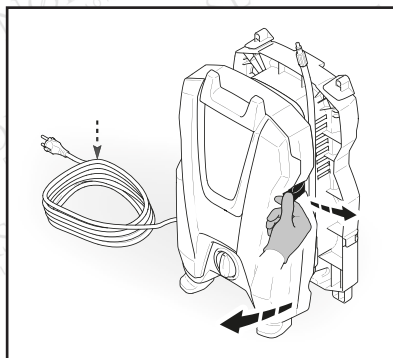
These steps describe the quickest method to get your pressure washer up and running. However, it is essential you fully read this manual to ensure you are familiar with the general safety features, precautions and functions necessary to operate the product. Failure to do so may result in injury and damage to your washer or personal items.



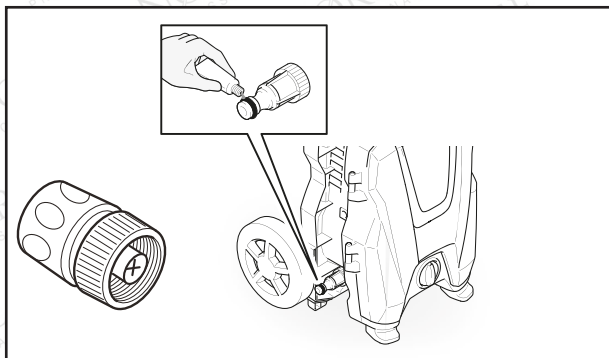
Attach the wheels by slotting them into the underside of the rear of the washer. They will click into place and lock.



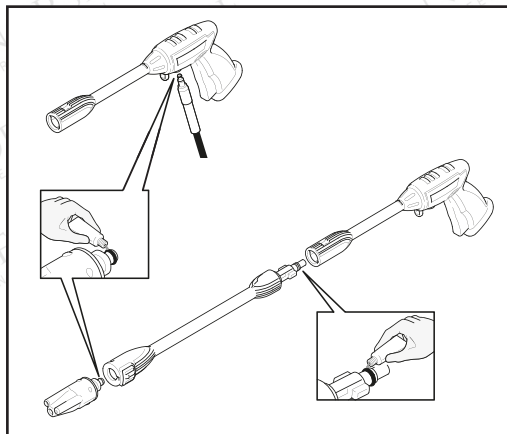
Fit the hose reel to the brackets on the top side of the washer using the supplied screws. The handle attaches to the reel and is secured using the supplied screws. Slot the reel crank handle into place.



Open the front of the washer by releasing the catch.



Install the quick connector filter by screwing it onto the water inlet of the power washer.

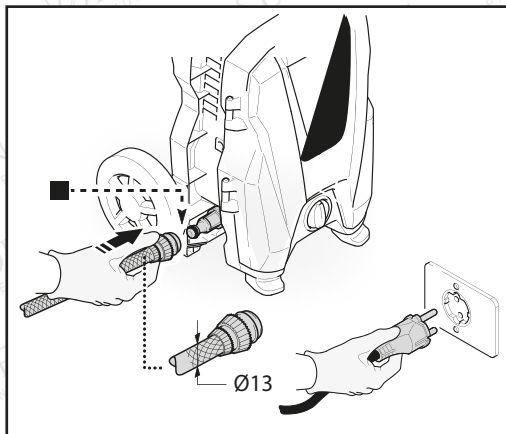


Attach the hose from the reel to the spray gun. Next, connect the spray gun lance attachment and variable nozzle to the spray gun. A small amount of lubrication can be applied to help fitting.

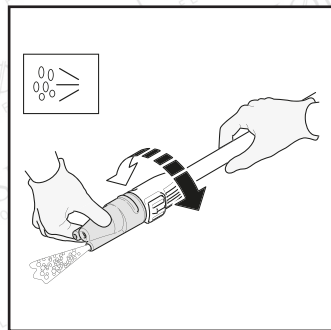
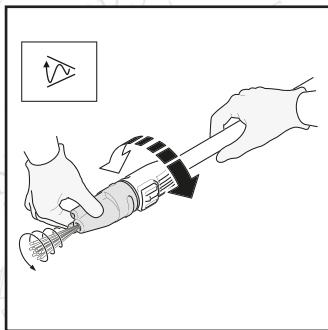
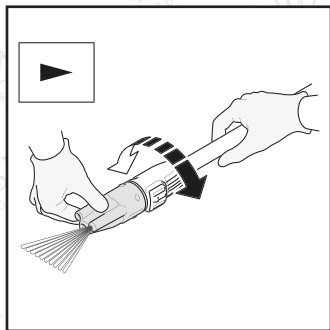
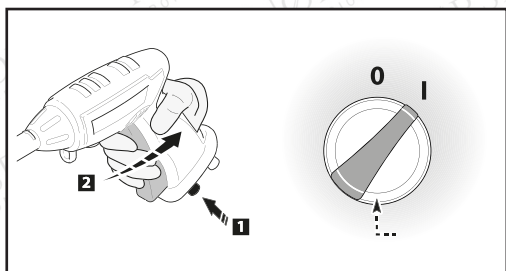
### Start Up:

Stand clear of the unit taking care not to aim the gun towards the pressure washer.

1. Release the safety button
2. Depress the trigger
3. Turn on the washer



1. Screw the quick hose connector on to your garden hose and slide onto the quick connector filter, it will "click" into place.
2. Plug in the washer to the mains power supply.



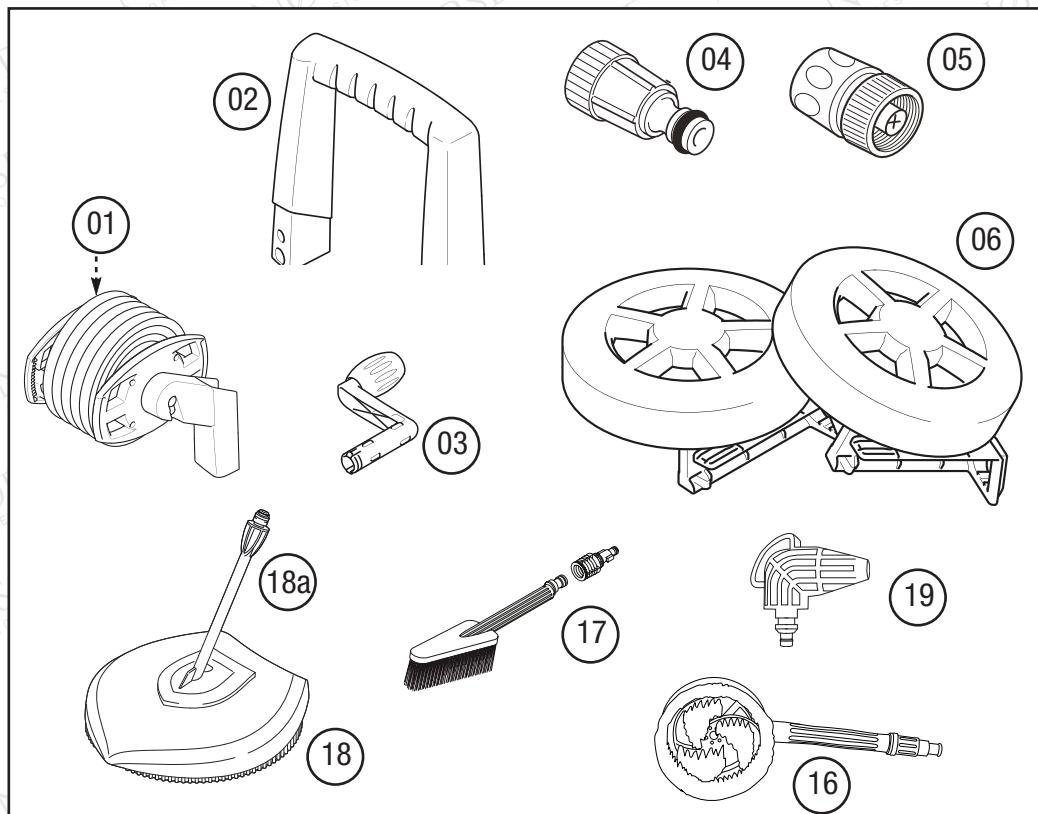
The variable nozzle has a wide range of uses and will deliver varying intensities of pressure depending on your requirements. Twist the nozzle to change from a low pressure fan spray, ideal for large surfaces, to a narrow jet of high pressure which will blast small areas for intense cleaning.

For detergent use, fill the tank '13' before twisting the nozzle to the detergent position.

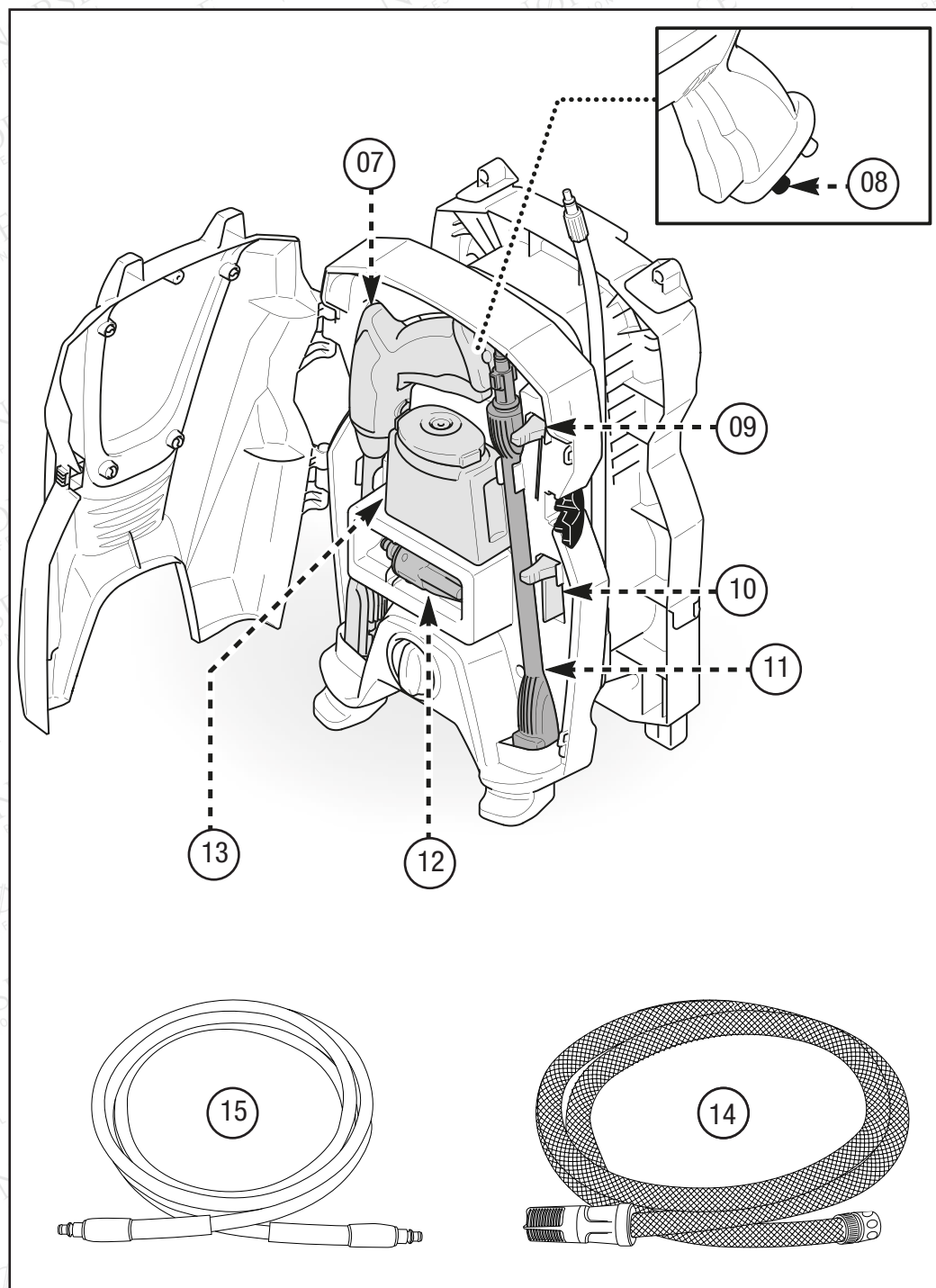


Before starting up the appliance check that the water supply hose is connected properly; use of the appliance without water will damage it; do not cover the ventilation grilles when the appliance is in use.

## Parts guide



- |                                |                                     |
|--------------------------------|-------------------------------------|
| 1. Hose reel                   | 11. Spray gun lance                 |
| 2. Handle                      | 12. Variable nozzle                 |
| 3. Reel crank handle           | 13. Detergent tank (certain models) |
| 4. Quick connector filter      | 14. Filtered hose                   |
| 5. Quick hose connector        | 15. Fiber extension hose            |
| 6. Wheels                      | 16. Rotary brush                    |
| 7. Spray gun                   | 17. Triangle brush                  |
| 8. Spray gun water inlet       | 18. Patio brush                     |
| 9. Nozzle cleaning tool        | 18a. Angle connector                |
| 10. Lubricant (certain models) | 19. 90° turbo nozzle                |





# General cleaning

## Distance from Cleaning Surface

Another factor that determines the impact force of the water is the distance from the variable nozzle to the cleaning surface

## Angle to the Cleaning Surface

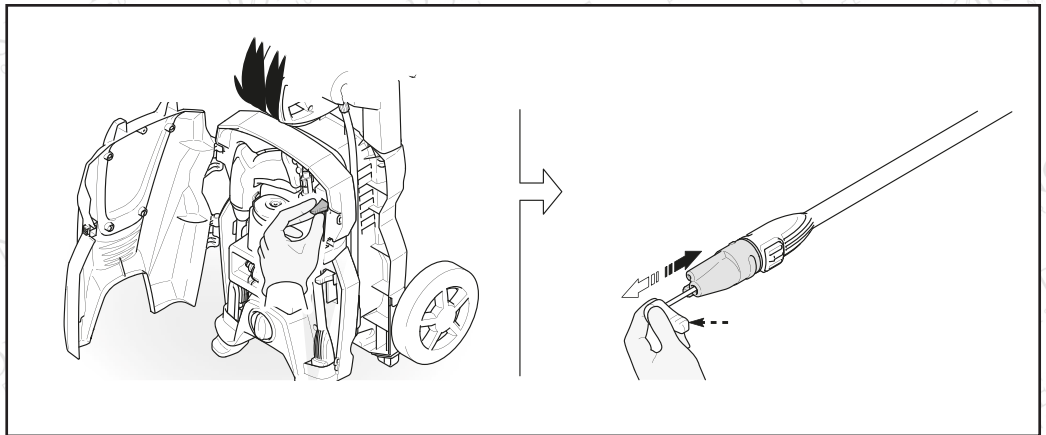
When spraying water against a surface, maximum impact is generated when the water strikes the surface head on. However, this type of impact tends to cause dirt particles to embed in the surface, thereby preventing the desired cleaning action. The optimum angle for spraying water against a surface is 45 degrees.

## Avoid Damaging Surfaces

Damage to surfaces occurs because the impact force of the water exceeds the durability of the surface. Never use a narrow high impact stream or a turbo / rotary nozzle on a surface that is susceptible to damage.

The surest way to avoid damaging surfaces:

1. Adjust the nozzle to a wide spray pattern.
2. Place the variable nozzle approximately 4-5 feet from and 45 degrees to the cleaning surface.
3. Vary the spray pattern, spray angle and the distance to the cleaning surface until optimum cleaning efficiency is achieved without damaging the surface.



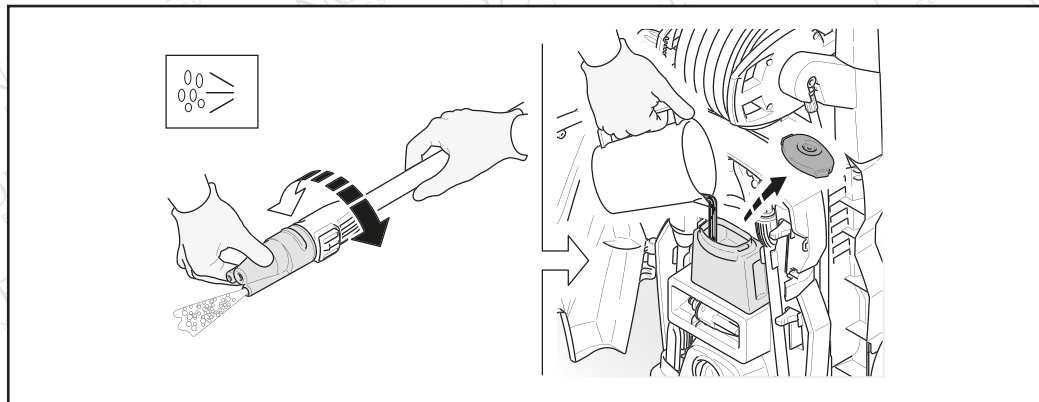
A cleaning tool is supplied to remove any debris from the nozzle before and after use.

## Looking After your Product

1. This pressure washer is not meant to pump hot water. Never connect to a hot water supply.
2. Never operate the unit for more than one minute without spraying water. This will cause a heat build-up that can damage the pump.
3. Only use the nozzles supplied with the machine.

4. Never store the pressure washer outdoors or where it could freeze. The pump will be seriously damaged. Any components with water left inside will also be damaged, e.g. the pressure gun.
5. Release the trigger when changing the spray pattern. Failure to do so could result in damage.
6. Do not operate the pressure washer with the inlet water screen removed. Be sure to keep the screen clear of debris and sediment.
7. Make sure you clean the machine every three months and inspect the filter and the nozzle prior to every use, ensuring there is no debris that may impair use.

## Detergent



The following cleaning procedure will ensure that you achieve the most beneficial results in the shortest amount of time.

### Surface preparation

Clear the working area and make sure that all windows and doors are closed tightly. Make sure that all plants and trees adjacent to the cleaning area are protected by a drop cloth.

### Initial high pressure rinse

The next step is to spray the cleaning surface with water to clear off any dirt or grime that may have collected on the surface. If you use detergent, this will allow your detergent to attack the dirt that has worked its way into the cleaning surface. Before triggering the gun, adjust the nozzle to a wide spray pattern and slowly adjust to the desired spray pattern. This will help you avoid applying too much pressure to the surface that could cause damage.

### Detergent application

Only use detergents formulated for pressure washers. Test the detergent in an inconspicuous area before use. Follow the manufacturer's label directions for mixing the correct concentrations of detergent to water.

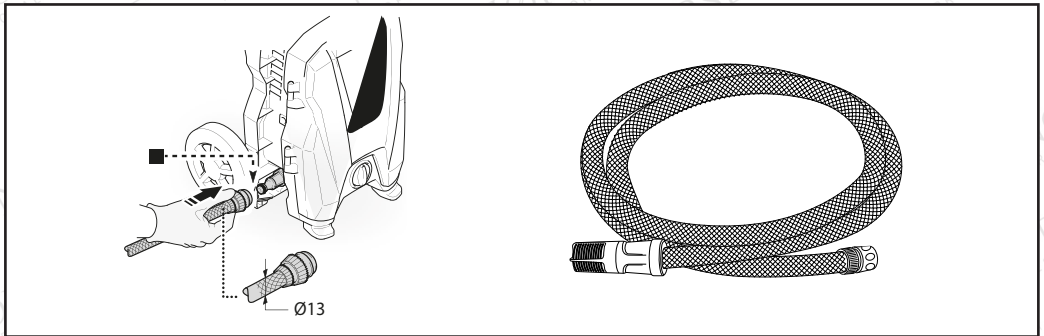


1. Unscrew the top of detergent tank and fill with detergent.
2. Put the top of detergent applicator back on.
3. Set variable nozzle to detergent feature.
4. Apply the detergent so it thoroughly covers the cleaning surface. Apply from bottom to top to prevent the detergent from sliding down and streaking.
5. Allow the detergent to remain on the surface for a few minutes. This is a good time to use a brush to lightly scrub heavily soiled areas. Never allow detergent to dry on the cleaning surface.
6. Rotate the variable nozzle from the detergent setting to the wide angle fan spray.
7. Rinse detergent from surface.
8. Rinse the detergent tank with clean water following each use.
9. Final rinse. Make sure you thoroughly rinse the surface and that all detergent has been removed.

### Shut down

1. Make sure all detergent is flushed from the system.
2. Turn off the motor.
3. Turn off the water supply.
4. Trigger the spray gun to de-pressurise the system.
5. After each use, wipe all surfaces of the pressure washer with a clean, damp cloth.

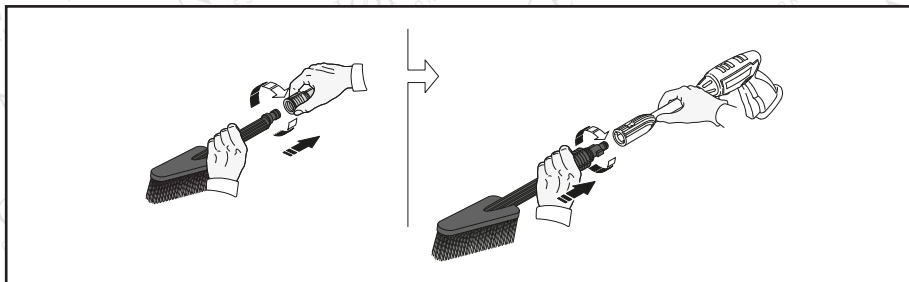
## Drawing from a barrel



First ensure the machine is switched off before connecting / disconnecting any hoses or attachments. Instead of attaching the hose from pump to tap, use the supplied hose and filter set placing the filter end in the water supply.

It is advised that the water supply is on the same level as the washer. If you struggle to get initial suction, remove the outlet hose from the pump and try drawing again - this reduces the pressure on the pump making it easier to draw. Once flowing, turn engine off and reconnect outlet hose before re-starting.

## Patio brush and triangle brush



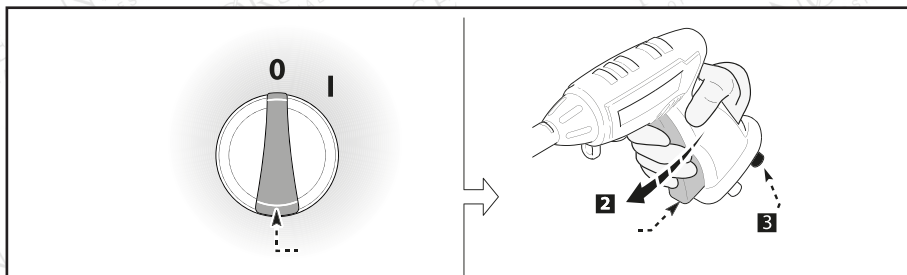
The **triangle brush** is specially designed to clean rims and the wheel of vehicles.

Screw the adaptor on the triangle brush. Then align the tongues of the adaptor with the grooves of the spray gun and insert it.

Securely fit the accessory by turning it clockwise and let it lock into place.

## Post operation / storage

- Do not store the pressure washer outdoors or in a location where it may freeze. Any water left in the machine, gun or any other components will expand if allowed to freeze, causing damage.
- Always turn the motor off before turning the water supply off.
- Never disconnect the hose from machine while the system is pressurized. To de-pressurise, turn the motor off, then turn the water supply off and squeeze spray gun trigger 2-3 times.



### Shut down:

1. Turn off the washer
2. Release the gun trigger
3. Lock the safety button

# Safety Symbols



**CAUTION:** Indicates a potentially hazardous situation which, if not avoided, may result in minor or moderate injury.



**WARNING:** Indicates a potentially hazardous situation which, if not avoided, could result in death or serious injury.



Risk of electrocution

## Safety and Warning Information



**WARNING:** When the machine is used, the following precautions should always be considered:

- To reduce the risk of injury, close supervision is necessary when the machine is used near children.
- Follow all safety codes as well as the Occupational Safety and Health Act (OSHA).
- Ensure safety devices are operating properly before using the machine. Do not remove or modify any part of the gun or main unit of the machine.
- Stay alert at all times when using the machine and always hold the gun firmly when operating the machine.
- Do not operate the machine when fatigued, suffering from reduced physical, sensory or mental capabilities or whilst under the influence of alcohol or drugs.
- Keep the operation area clear of all electrical equipment, persons, animals and pets. Do not leave the machine unattended when setup for use. Always engage the trigger safety latch after use.
- Do not point the pressure gun at anyone whilst the unit is connected to a water supply.
- Do not overreach or stand on an unstable support. Keep good footing and balance at all times.
- Use a cleaning agent supplied or recommend by the manufacturer. Always protect your eyes, skin, and respiratory system from detergent use.
- If your eyes (or any other sensitive part of your body) comes into contact with detergent, rinse with plenty of clean water.
- In the event of an accident, switch off the machine, pull the plug from the socket outlet and disconnect the water supply.
- Always wear safety goggles, ear protection and protective clothing even when performing maintenance.
- Never put hands or fingers over the spray tip while operating the unit.
- Never try to stop or deflect leaks with any body part.



**WARNING:** The electrical supply connection must be made by a qualified person and comply with IEC 60364-1. The electric supply to this machine should include either a residual-current device / circuit breaker that will interrupt the supply if the current to earth exceeds 30 mA for 30 ms.



**WARNING:** This is a double-insulated machine so two systems of insulation are provided instead of grounding. No grounding means are provided for a double-insulated machine, nor should grounding means be added to the machine. Servicing a double-insulated machine requires extreme care and knowledge of the system. It should be done only by qualified service personnel. Replacement parts for a double-insulated machine must be identical to the original parts.

**WARNING:** Do not use an inlet pressure that exceeds the operating pressure of any of the parts (hoses, fittings, etc). Ensure all equipment and accessories are rated to withstand the maximum working pressure of the unit.

**WARNING:** Never spray flammable liquids or use the pressure washer in areas containing combustible dust, liquids or vapours.

**WARNING:** Do not spray electrical apparatus and wiring.

**WARNING:** To ensure machine safety, please only use original spare parts (including nozzles) from the manufacturer or approved by the manufacturer.

**WARNING:** Make sure the inlet water is maintained between 0.01MPa and 0.4MPa.

**WARNING:** If the mains cable is damaged it must be replaced by the manufacturer, or its service agent or similarly qualified person to avoid a hazard or injury.

**WARNING:** Use only extension cords intended for outdoor use and that have an electrical rating equal to or more than the rating of the machine. Examine the cord before using and replace it if damaged. Keep the cord away from heat and sharp edges. It is recommended that you use a cord reel that keeps the socket at least 60mm above the ground.

**CAUTION:** Keep the hose away from sharp objects. Bursting hoses may cause injury. Examine the hose regularly and replace it if damaged. Do not attempt to repair a damaged hose.

- Never disconnect the high pressure outlet hose from the machine while the system is pressurised. To de-pressurise machine, turn power and water supply off, then press gun trigger 2-3 times.
- Never operate the machine without all of the components properly connected to the machine (handle, gun / lance assembly, nozzle, etc).
- Never operate the pressure washer with broken or missing parts. Check equipment regularly and repair or replace worn or damaged parts immediately.



**WARNING:** To reduce the risk of electrocution, keep all connections dry and off the ground. Do not touch the plug with wet hands.



**WARNING:** Do not use the machine if the supply cord or any important parts of the machine are damaged (e.g. safety devices, high pressure hoses, etc).



# Troubleshooting

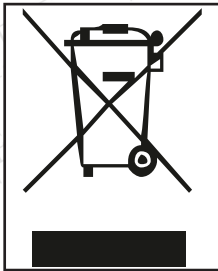
Symptom	Possible Cause(s)	Corrective Actions
No detergent suction	1. Detergent tank is clogged	1. Clean detergent tank with warm water
Pressure washer does not start up	1. Unit is pressurised 2. Plug is not connected correctly or electrical supply is damaged / faulty 3. Thermal safety switch has tripped	1. Clean water inlet 2. Check that connections are properly tightened 3. Switch off unit and allow to cool down
Pump does not reach necessary pressure	1. Water inlet is clogged 2. Pump sucking air from hose connections 3. Variable spray nozzle is worn or not correct size 4. Unloader / valves are clogged/ worn	1. Clean quick connector filter 2. Check that connections are properly tightened 3. Call the dealer 4. Call the dealer
Fluctuating pressure	1. Pump is sucking air 2. Clogged nozzle 3. Valves dirty, worn or clogged 4. Water seals worn	1. Check that hoses and connections are tight 2. Clean with tip cleaner 3. Call the dealer 4. Call the dealer
Motor stops suddenly	1. Thermal safety switch has tripped due to overheating	1. Check mains supply voltage corresponds to specifications

## Technical Data

Item	SK125
Working pressure	11.8 MPa / 118 BAR / 1750 PSI
Allowable pressure	16 MPa / 160 BAR / 2350 PSI
Maximum flow rate	460 Litres / hour
Motor capacity	2200 Watt
Power supply voltage	240V ~ 50HZ
Intake water pressure	Min 0.1MPa / Max 1MPa
Max input temperature	50 °
Motor insulation rating	Class F
Dimensions	355 x 270 x 790mm
Weight	11.5Kg

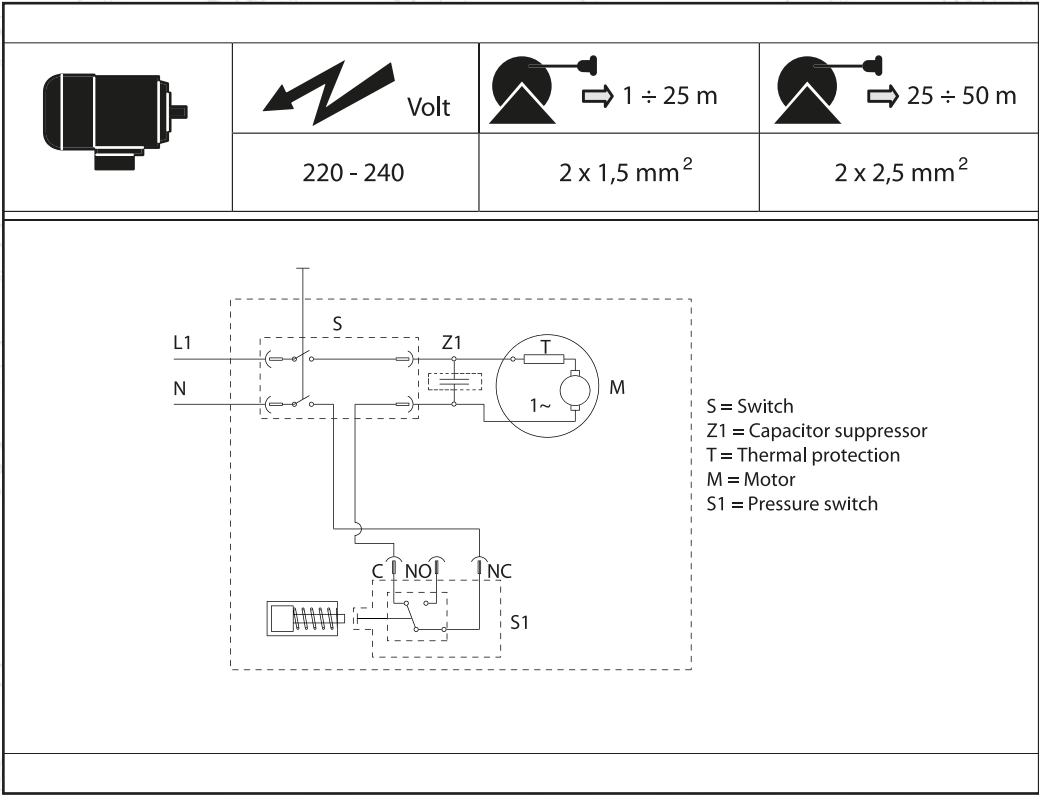


# Disposal Regulations



Do not dispose of electrical machines as unsorted municipal waste, use separate collection facilities. Contact your local government for information regarding the collection systems available. If electrical machines are disposed of in landfills or dumps, hazardous substances can leak into the groundwater and get into the food chain, damaging your health and well-being. For transportation safety, the machine should comply with ISTA.

# Wiring diagram



# CE Certification

We hereby declare that the machine described below complies with the relevant basic safety and health requirements of the EU Directives, both in its basic design and construction as well as in the version put into circulation by us. This declaration shall cease to be valid if the machine is modified without our prior approval.

**The undersigned:** Michael S McQuaide

**as authorised by:** Union Mart Ltd

Declares that

**Description:** Electric Pressure Washer

**Identification code:** NØRSE SK125

**Conforms to the following European Directives:**

2006/42/EG, 2006/95/EG, 2011/65/EG, 2002/96/EG, 2004/108/EG, 2000/14/EG

--

**And are manufactured in accordance to the following standards or standardised documents:**

EN 60335-1; EN 60335-2-79; EN 55014-1; EN55014-2; EN 61000-3-2; EN 61000-3-3; EN 61000-3-11;

EN 60704-1

**Sound power level:** Measured: 93 dB (A) – Guaranteed: 94 dB (A)

CE marking was affixed

**Notified body:** TÜV SÜD Product Service GmbH

**The technical documentation is kept by:** Union Mart Ltd

**Date:** 02/12/19

**Signed:**



Michael S McQuaide

Chief Executive Officer

**Name and address of the manufacturer:**

Union Mart Ltd, Company No. 8384155.

**Registered address:** Unit 15, Brickfield Industrial Estate Brickfield Lane, Chandler's Ford, Eastleigh,  
SO53 4DR