

NORSE

PROFESSIONAL

OPERATION MANUAL



SK90

Electric Pressure Washer



Read this manual carefully before use and keep it for future reference. Failure to do so may result in injury, property damage and may void the warranty.

Products covered by this manual may vary in appearance, assembly, inclusions, specifications, description or packaging.

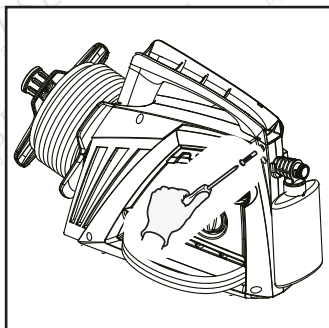
Contents

2	Contents
3	Quick Start Guide
4	Drawing from a barrel
5	Parts Guide
6	Maintenance
6	General Cleaning
7	Detergent
8	Looking After your Product
8	Post Operation / Storage
9	Safety Symbols
9	Safety and Warning Information
11	Troubleshooting
11	Technical Data
12	Disposal Regulations
13	CE Certification

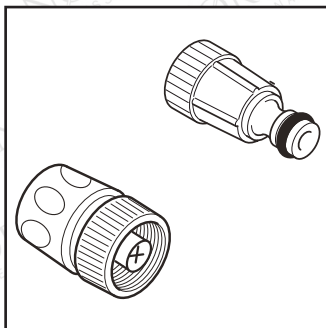
Quick Start Guide



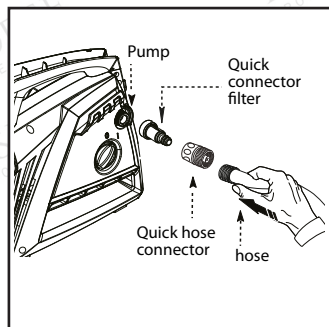
The following steps describe the quickest method to get your pressure washer up and running. However, it is essential you fully read this manual to ensure you are familiar with the general safety features, precautions and functions necessary to operate the product. Failure to do so may result in injury and damage to your washer or personal items.



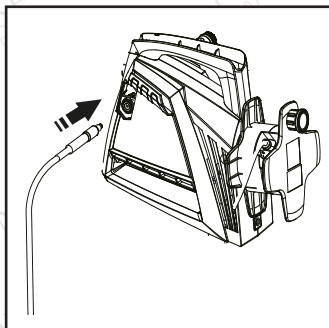
This high pressure washer has built-in accessory compartments. To assemble, place handle into top of unit and push forward to lock place. Secure with included screw.



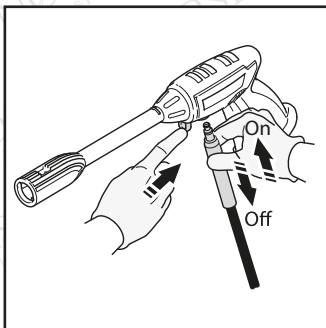
Install the quick connector filter and the quick hose connector. Attach the quick connector filter by screwing it into the water inlet of the power washer.



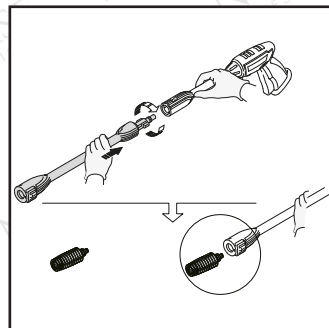
Screw the quick hose connector on to your garden hose and slide onto the quick connector filter, it will "click" into place.



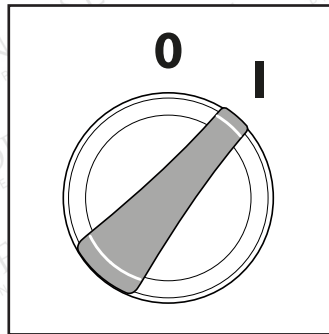
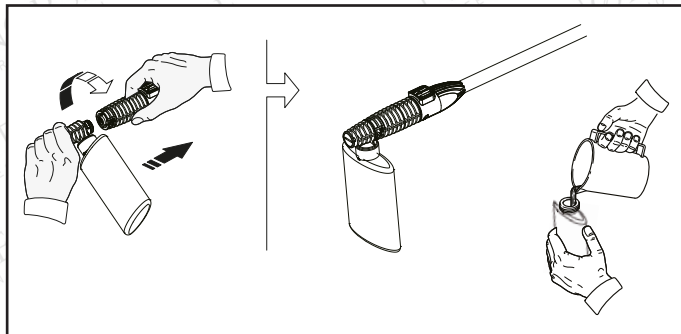
Connect one end of the high pressure hose to the unit by inserting it into front right side, by pulling slightly on the hose it will lock into the unit. The hose is now securely attached.



Connect the other end of the hose to the spray gun by inserting next to the trigger. By pulling slightly on the hose, it will lock into the spray gun.



Insert the extension lance into the end of the spray gun by pushing together and turning clockwise at the same time. Insert the fixed spray nozzle into the end of the extension lance by pressing the blue button on the end of the extension lance, then press the fixed spray nozzle into the extension lance and turn clockwise until it "clicks into place."



When using detergent, attach the detergent bottle directly onto the end of the fixed spray nozzle until it “clicks” and turn to lock in place.

Fill the detergent bottle with a properly formulated detergent or cleaner with a water ratio according to instructions on the container. The detergent bottle comes with a straw which is fitted into the screw-on top. If you do not see the straw, look inside the bottle and attach it to the screw-on top.

1. Unwind the power cord completely and plug the cable into a 240 volt outlet.
2. Turn on the water supply.
3. Turn the power on switch to the ‘I’ on position.
4. Squeeze the trigger on the gun.



WARNING! Always turn on the water supply before powering on the washer. Running the machine without a water flow will damage the pump and motor.

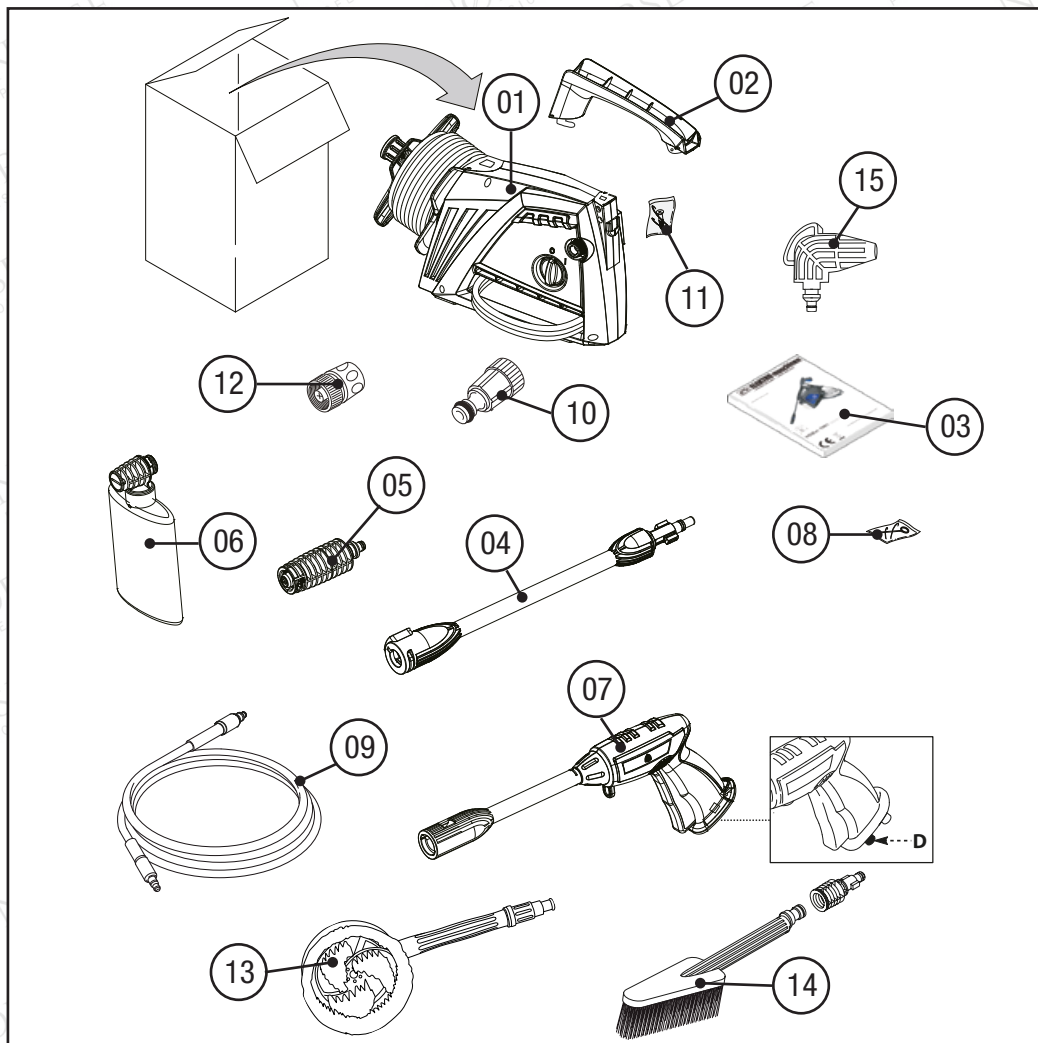
- If you hear the motor run briefly when the trigger is not being squeezed, that is normal. The pump is priming itself so it is ready to operate when the trigger is squeezed. Turn off the power washer if not being used after one minute.
- Do not pull trigger rapidly, this will cause the Total Stop System (TSS) to malfunction and unit will not turn on. Pull trigger slowly and methodically.
- The o-rings on the bayonet end of the adjustable lance and detergent bottle should be cleaned regularly and lubricated with light grease or petroleum jelly.

Drawing from a barrel

First ensure the machine is switched off before connecting / disconnecting any hoses or attachments. Instead of attaching the hose from pump to tap, use a smaller length of hose with a filter set placing the filter end in the water supply.

It is advised that the water supply is on the same level as the washer. If you struggle to get initial suction, remove the outlet hose from the pump and try drawing again - this reduces the pressure on the pump making it easier to draw. Once flowing, turn engine off and reconnect outlet hose before re-starting.

Parts Guide



1. Power washer unit

2. Handle

3. Manual

4. Extension lance

5. Fixed spray nozzle

6. Detergent bottle

7. Spray gun ('D' shows trigger lock)

8. Nozzle cleaning tool

9. High pressure hose

10. Quick connector filter

11. Screw pack

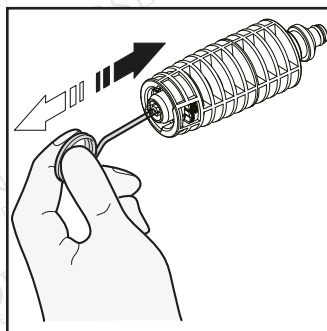
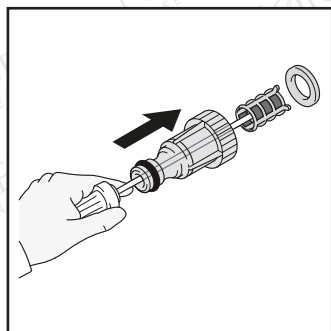
12. Quick hose connector

13. Rotary brush

14. Triangle brush

15. 90° turbo nozzle

Maintenance



The screen inside the quick connector filter should be cleaned periodically. Insert a pen or pencil in small hole at the end of the adapter. The screen filter will slide out. Rinse it with clean water, and then place it back in the adapter.

times, and then lock the spray gun by pushing the lock button from left to right.

- Using the nozzle tip cleaner provided (or an unfolded paper clip), insert the wire into the nozzle hole and move back and forth until debris is dislodged. Back flush water through the nozzle using a garden hose.

- A clogged or partially clogged nozzle can cause significant reduction of water pressure coming out of the nozzle and/or cause the unit to pulsate while spraying.
- Turn the unit off.
- Turn off the water supply to the unit.
- Relieve any pressure trapped in the high pressure hose by squeezing the trigger 2-3

General Cleaning

Avoid Damaging Surfaces

Damage to surfaces occurs because the impact force of the water exceeds the durability of the surface. Never use a narrow high impact stream or a turbo / rotary nozzle on a surface that is susceptible to damage.

The surest way to avoid damaging surfaces:

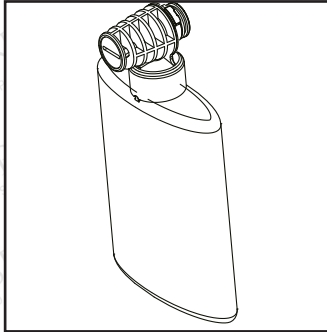
1. Place the spray nozzle approximately 4-5 feet from and 45 degrees to the cleaning surface.
2. Vary the spray pattern, spray angle and the distance to the cleaning surface until optimum cleaning efficiency is achieved without damaging the surface.

Angle to the Cleaning Surface

When spraying water against a surface, maximum impact is generated when the water strikes the surface head on. However, this type of impact tends to cause dirt particles to embed in the surface, thereby preventing the desired cleaning action.

The optimum angle for spraying water against a surface is 45 degrees.

Detergent



The following cleaning procedure will ensure that you achieve the most beneficial results in the shortest amount of time. Use the detergent nozzle to apply detergent. Some cleaning tasks can be completed with water alone, but for most tasks the removal of dirt becomes more effective if a detergent is used.

NOTE: Only use mild, environmentally friendly detergents. Never use aggressive chemicals, abrasive detergents or similar to avoid damage to your health, the product and the environment.

Surface preparation

Clear the working area and make sure that all windows and doors are closed tightly. Make sure that all plants and trees adjacent to the cleaning area are protected by a drop cloth.

Initial high pressure rinse

The next step is to spray the cleaning surface with water to clear off any dirt or grime that may have collected on the surface. If you use detergent, this will allow your detergent to attack the dirt that has worked its way into the cleaning surface. Before triggering the gun, adjust the nozzle to a wide spray pattern and slowly adjust to the desired spray pattern. This will help you avoid applying too much pressure to the surface that could cause damage.

Detergent application

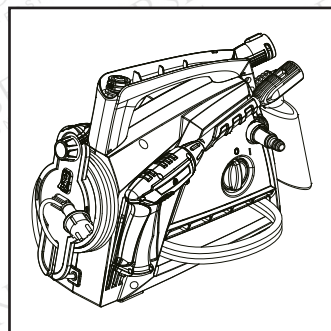
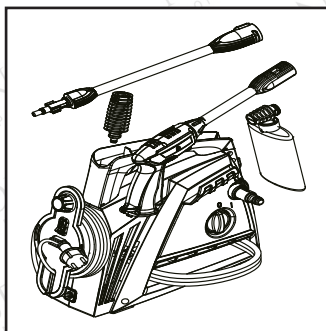
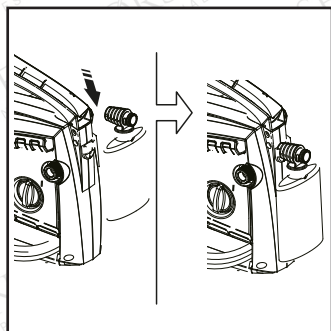
Only use detergents formulated for pressure washers. Test the detergent in an inconspicuous area before use. Follow the manufacturer's label directions for mixing the correct concentrations of detergent to water.

1. Unscrew the top of detergent applicator and fill with detergent.
2. Put the top of detergent applicator back on.
3. Attach the detergent bottle to the end of the fixed spray nozzle, click into place.
4. Apply the detergent so it thoroughly covers the cleaning surface. Apply from bottom to top to prevent the detergent from sliding down and streaking.
5. Allow the detergent to remain on the surface for a few minutes. This is a good time to use a brush to lightly scrub heavily soiled areas. Never allow detergent to dry on the cleaning surface.
6. Remove detergent bottle from the fixed spray nozzle.
7. Rinse detergent from surface.
8. Rinse the detergent bottle with clean water following each use.
9. Final rinse. Make sure you thoroughly rinse the surface and that all detergent has been removed.

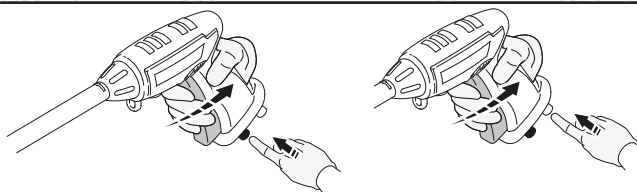
Looking After your Product

1. This pressure washer is not meant to pump hot water. Never connect to a hot water supply.
2. Never operate the unit for more than one minute without spraying water. This will cause a heat build-up that can damage the pump.
3. Only use the nozzles supplied with the machine.
4. Never store the pressure washer outdoors or where it could freeze. The pump will be seriously damaged. Any components with water left inside will also be damaged, e.g. the pressure gun.
5. Release the trigger when changing the spray pattern. Failure to do so could result in damage.
6. Do not operate the pressure washer with the inlet water screen removed. Be sure to keep the screen clear of debris and sediment.
7. Make sure you clean the machine every three months and inspect the filter and the nozzle prior to every use, ensuring there is no debris that may impair use.

Post Operation / Storage



- Do not store the pressure washer outdoors or in a location where it may freeze. Any water left in the machine, gun or any other components will expand if allowed to freeze, causing damage.
- Always turn the motor off before turning the water supply off.
- Never disconnect the hose from machine while the system is pressurized. To de-pressurize, turn the motor off, then turn the water supply off and squeeze gun trigger 2-3 times.
- Remove high pressure hose from the spray gun and the power washer.
- Remove extension lance and/or detergent bottle from the gun. Make sure to discard any remaining detergent from the bottle. Flush the bottle and nozzle head with fresh water to prevent clogging.
- To release the high pressure hose from the unit, press the thumb tab down on the unit and the hose will slide out from the connection.
- To release the high pressure hose from the spray gun, press the thumb tab on the underside of the spray gun towards the trigger. The hose will slide out from the connections.



To lock the trigger of the spray gun, make sure power is off (0), aim the spray gun away from you and push the lock button up, after doing so, squeeze or pull the trigger to make sure it is locked and will not move.

Safety Symbols



CAUTION: Indicates a potentially hazardous situation which, if not avoided, may result in minor or moderate injury.



WARNING: Indicates a potentially hazardous situation which, if not avoided, could result in death or serious injury.



Risk of electrocution

Safety and Warning Information



WARNING: When the machine is used, the following precautions should always be considered:

- To reduce the risk of injury, close supervision is necessary when the machine is used near children.
- Follow all safety codes as well as the Occupational Safety and Health Act (OSHA).
- Ensure safety devices are operating properly before using the machine. Do not remove or modify any part of the spray gun or main unit of the machine.
- Stay alert at all times when using the machine and always hold the gun firmly when operating the machine.
- Do not operate the machine when fatigued, suffering from reduced physical, sensory or mental capabilities or whilst under the influence of alcohol or drugs.
- Keep the operation area clear of all electrical equipment, persons, animals and pets. Do not leave the machine unattended when setup for use. Always engage the trigger lock after use.
- Do not point the spray gun at anyone whilst the unit is connected to a water supply.
- Do not overreach or stand on an unstable support. Keep good footing and balance at all times.
- Use a cleaning agent supplied or recommend by the manufacturer. Always protect your eyes, skin, and respiratory system from detergent use.
- If your eyes (or any other sensitive part of your body) comes into contact with detergent, rinse with plenty of clean water.
- In the event of an accident, switch off the machine, pull the plug from the socket outlet and disconnect the water supply.
- Always wear safety goggles, ear protection and protective clothing even when performing maintenance.
- Never put hands or fingers over the spray gun / fixed spray nozzle while operating the unit.
- Never try to stop or deflect leaks with any body part.



WARNING: The electrical supply connection must be made by a qualified person and comply with IEC 60364-1. The electric supply to this machine should include either a residual-current device / circuit breaker that will interrupt the supply if the current to earth exceeds 30 mA for 30 ms.



WARNING: This is a double-insulated machine so two systems of insulation are provided instead of grounding. No grounding means are provided for a double-insulated machine, nor should grounding means be added to the machine. Servicing a double-insulated machine requires extreme care and knowledge of the system. It should be done only by qualified service personnel. Replacement parts for a double-insulated machine must be identical to the original parts.

WARNING: Do not use an inlet pressure that exceeds the operating pressure of any of the parts (hoses, fittings, etc). Ensure all equipment and accessories are rated to withstand the maximum working pressure of the unit.

WARNING: Never spray flammable liquids or use the pressure washer in areas containing combustible dust, liquids or vapours.

WARNING: Do not spray electrical apparatus and wiring.

WARNING: To ensure machine safety, please only use original spare parts (including nozzles) from the manufacturer or approved by the manufacturer.

WARNING: Make sure the inlet water is maintained between 0.01MPa and 0.4MPa.

WARNING: If the mains cable is damaged it must be replaced by the manufacturer, or its service agent or similarly qualified person to avoid a hazard or injury.

WARNING: Use only extension cords intended for outdoor use and that have an electrical rating equal to or more than the rating of the machine. Examine the cord before using and replace it if damaged. Keep the cord away from heat and sharp edges. It is recommended that you use a cord reel that keeps the socket at least 60mm above the ground.

CAUTION: Keep the hose away from sharp objects. Bursting hoses may cause injury. Examine the hose regularly and replace it if damaged. Do not attempt to repair a damaged hose.

- Never disconnect the high pressure outlet hose from the machine while the system is pressurised. To de-pressurise machine, turn power and water supply off, then press gun trigger 2-3 times.
- Never operate the machine without all of the components properly connected to the machine (handle, gun / lance assembly, nozzle, etc).
- Never operate the pressure washer with broken or missing parts. Check equipment regularly and repair or replace worn or damaged parts immediately.



WARNING: To reduce the risk of electrocution, keep all connections dry and off the ground. Do not touch the plug with wet hands.



WARNING: Do not use the machine if the supply cord or any important parts of the machine are damaged (e.g. safety devices, high pressure hoses, etc).

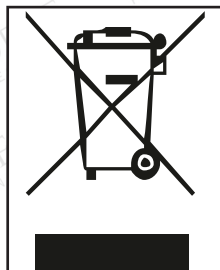
Troubleshooting

Symptom	Possible Cause(s)	Corrective Actions
No detergent suction	1. Detergent bottle is clogged	1. Clean detergent bottle with warm water 2. Replace detergent bottle
Pressure washer does not start up	1. Unit is pressurised 2. Plug is not connected correctly or electrical supply is damaged / faulty 3. Thermal safety switch has tripped	1. Clean water inlet 2. Check that connections are properly tightened 3. Switch off unit and allow to cool down
Pump does not reach necessary pressure	1. Water inlet is clogged 2. Pump sucking air from hose connections 3. Fixed spray nozzle is worn or not correct size 4. Unloader / valves are clogged/ worn	1. Clean quick connector filter 2. Check that connections are properly tightened 3. Call the dealer 4. Call the dealer
Fluctuating pressure	1. Pump is sucking air 2. Clogged nozzle 3. Valves dirty, worn or clogged 4. Water seals worn	1. Check that hoses and connections are tight 2. Clean with tip cleaner 3. Call the dealer 4. Call the dealer
Motor stops suddenly	1. Thermal safety switch has tripped due to overheating	1. Check mains supply voltage corresponds to specifications

Technical Data

Item	SK90
Working pressure	9 MPa / 90 BAR / 1300 PSI
Allowable pressure	13.1 MPa / 131 BAR / 1900 PSI
Maximum flow rate	435 Litres / hour
Motor capacity	1800 Watt
Power supply voltage	240V ~ 50HZ
Intake water pressure	Max 1MPa
Max input temperature	40°
Dimensions	420 x 220 x 380mm
Weight	6.9 Kg

Disposal Regulations



Do not dispose of electrical machines as unsorted municipal waste, use separate collection facilities. Contact your local government for information regarding the collection systems available. If electrical machines are disposed of in landfills or dumps, hazardous substances can leak into the groundwater and get into the food chain, damaging your health and well-being. For transportation safety, the machine should comply with ISTA.

CE Certification

We hereby declare that the machine described below complies with the relevant basic safety and health requirements of the EU Directives, both in its basic design and construction as well as in the version put into circulation by us. This declaration shall cease to be valid if the machine is modified without our prior approval.

The undersigned: Michael S McQuaide

As authorised by: Union Mart Ltd

Declares that

Description: Electric Pressure Washer

Identification code: NØRSE SK90

Conforms to the following European Directives:

(2006/42/EC)(2006/95/EC)(2004/108/EC)(2011/65/EU)

--

And are manufactured in accordance to the following standards or standardised documents:

(EN 55014-1)(EN 55014-2)(EN 60335-1)(EN 60335-2-79)(EN 61000-3-2)(EN 61000-3-3)

Sound power level:

Measured: 93 dB (A) – Guaranteed: 94 dB (A)

CE marking was affixed

Notified body: TÜV SÜD Product Service GmbH

The technical documentation is kept by: Union Mart Ltd

Date: 27/11/19

Signed:



Michael S McQuaide

Chief Executive Officer

Name and address of the manufacturer:

Union Mart Ltd, Company No. 8384155.

Registered address: Unit 15, Brickfield Industrial Estate Brickfield Lane, Chandler's Ford, Eastleigh,
SO53 4DR