

# Operation Manual

## Transmission Jack

50795



Illustration similar, may vary depending on model

Read and follow the operating instructions and safety information before using for the first time.

Technical changes reserved!

Due to further developments, illustrations, functioning steps and technical data can differ insignificantly.

Updating the documentation

If you have suggestions for improvement or have found any irregularities, please contact us.



The information contained in this document is subject to change without prior notice. No part of this document can be copied or duplicated in another form without the prior written consent of WiITec Wildanger Technik GmbH. The WiITec Wildanger Technik GmbH assumes no liability for any errors in this user manual or the connection diagram.

Although WiITec Wildanger Technik GmbH has made every effort to make sure that this user manual is complete, accurate and updated, errors cannot always be avoided. In the event of problems with this user manual please complete and send this form back to us.

**FAX-notification (+++49 2403 55592-15),**

**from:** \_\_\_\_\_

**Name:** \_\_\_\_\_

**Firm:** \_\_\_\_\_

**Tel/Fax:** \_\_\_\_\_

**I would like to report the following mistakes:**

---

Customer Service WiITec Wildanger Technik GmbH

e-mail: **service@WiITec.info**

Tel: ++49 2403 55592-0

### **Introduction**

Thank you for purchasing this quality product. **To minimize the risk of injury we urge that our clients take some basic safety precautions when using this device. Please read the operation instructions carefully and make sure you have understood its content.**

Keep these operation instructions safe.

## Description

This transmission jack with a load capacity of 500 kg and a max. lifting height of 195 cm is ideal for performing maintenance, repairs or assembly work on gearboxes and undercarriages. It can further be used when replacing bearings under lifting platforms. The transmission jack can be conveniently placed beneath the vehicle due to it being equipped with castors, can then be pumped to the required height via the easy to operate foot pedal and afterwards be lowered without much effort by using the infinitely variable hand wheel located on its side.

Model	Rated load (kg)	Minimum retainer height (mm)	Maximum retainer height (mm)
50795	500	1100	1900

## Safety Instructions / Warnings



Please make sure to carefully read the information and safety instructions found within this operation manual and adhere to them in order to ensure an ideal mode of operation while at the same time minimising the risk of accidents. The instructions found in this manual thereby do not replace rules and regulations applying at your workplace and instead complement them. Keep this manual and make sure it is in reach when working with this product.

1. Familiarize yourself with all the information, instructions and warnings found in this manual as well as the respective manuals of other tools being used.
2. Be knowledgeable about how to properly handle and apply the device.
3. The transmission jack may only be used for the installation and removal of gearboxes and associated parts (gearshifts, differentials etc.)
4. Make sure that all connection supports have been connected properly and securely.
5. This device can only be used by children or individuals with reduced physical, sensory or mental capabilities, or lack of experience and knowledge, if they have received instructions concerning the use of the appliance from and are being supervised by a person familiar with the product and responsible for their safety.
6. Children have to be supervised at all times in order to ensure that they do not play with the device.
7. Ensure that the process of lifting is not obstructed or hindered by other objects.
8. Always make sure that the load is properly and securely placed upon the centre of the retainer.
9. When loaded, the transmission jack may only be rolled across even flooring in a slow manner and while its retainer has completely been lowered.
10. Ensure that the load cannot slip off the transmission jack.
11. After moving the loaded transmission jack for several centimetres, stop moving in order to check the balance of its load before continuing.
12. Avoid unsteadiness of the load.
13. Keep bystanders out of the path of the transmission jack and the swivelling range of the load.
14. Make sure to warn bystanders within the working area of lifted loads.
15. Never exceed the load capacity of the transmission jack.
  
16. Never use transmission jacks, if they are damaged or malfunctioning in any way.



17. Never use retainers showing signs of damage or wear.
18. Do not lift loads, if the lifting process could be obstructed by nearby objects.
19. Always make sure to stay focused and attentive when handling loads
20. Do not abuse the transmission jack as ladder and do not lift individuals with it.
21. **Do not lift objects over the heads of others.**
22. Incorrectly secured or placed loads might cause damage to the device as well as its surroundings and even cause severe injuries or death.
23. Always keep an eye on lifted loads.
24. Ensure that the transmission jack does not bump into objects when being moved around.
25. Do not attempt to modify or repair the retainer of the transmission jack.
26. Do not use welding devices in the vicinity of the transmission jack.
27. Always make sure that your work place is well-lit and clean, since cluttered and dark work areas increase the risk of accidents.
28. Always make sure to wear non-skid safety shoes.
29. Do not wear loose clothing, scarves, necklaces and other accessories or unconfined long hair when working with the transmission jack as they might get stuck in the device and cause severe injuries.
30. Do not operate the transmission jack when you are tired or under the influence of alcohol, drugs or medication.
31. Working while standing for a long time might cause dizziness. Ensure to regularly take breaks and drink enough.
32. Do not abuse the transmission jack as car jack.
33. Only use the transmission jack on sturdy and even grounds in order for it to be capable of utilising its maximum capacity.
34. Before working on a vehicle, ensure that the vehicle is properly secured and has been placed accordingly.
35. Never loosen pressurised screws or bolts.
36. Make sure the load is placed in the centre of the retainer.
37. When refilling hydraulic oil, make sure that the retainer has been completely lowered. Only use high-quality hydraulic oil and never use brake fluids, alcohol, glycerine, detergents, engine oil, water, polluted oil or other liquids.
38. The hydraulic cylinder is exposed to constant pressure and must not be opened by force.

## Inspection

Before operating the transmission jack, always visually check it for signs of damage or wear in order to timely notice potentially loose or missing parts. Further make sure to regularly check the oil level. Before refuelling oil, bring the retainer of the device into its lowest position. Then remove the cover lid; the oil-level has to reach to the opening for the device to function properly.

If having been exposed to stronger impact forces or excess load, the transmission jack needs to be checked for its integrity before it is used again. This examination should only be performed by qualified personnel. It is further advised to have an inspection performed on an annual basis. Defect parts need to be replaced immediately and the transmission jack must not be used before its integrity has been restored. Therefore, regularly check the device for signs of cracks caused by wear and corrosion. In case of corrosion, clean the affected area with an oily cloth.

In case of the transmission jack having to be scrapped, make sure to drain the oil beforehand and to dispose of it in a proper and professional manner.

## Assembly

The transmission jack will be delivered in a disassembled condition and has to be assembled before it can be used. Before assembling the transmission jack, check all the parts for their integrity. It is important that none of the parts has been damaged during transport.

Assemble the base of the transmission jack by screwing the two stands to the base body utilizing the hexagonal socket head screws. Then attach the castors to the base parts with help of the nuts and washers included in the scope of delivery. Make sure all four castors properly touch the ground when placed upon an even surface. Also attach the retainer to the hydraulic piston rod (Figure 1).

Then connect the hydraulic piston rod to the main frame and ensure that it is placed in a proper, vertical position before tightening the screws. Loosen the drain screw in order to allow the air trapped within the system to escape (Figure 2).

Use the pedal in order to pump the transmission jack up to its maximum height. Note that using the pedal while the drain screw is tightened damages the hydraulic cylinder and thereby disables the transmission jack (Figure 3).

Once the retainer has reached its highest position, use the hand wheel in order to lower it again. When the retainer has been lowered completely, the transmission jack is ready for operation (Figure 4).

When transporting items with the transmission jack, always ensure that the hydraulic piston rod is not extended and that the ground is even and free from obstacles. Transporting items with an extended hydraulic piston rod or across uneven grounds damage the device as well as its surroundings and may lead to severe injuries (Figure 5).

#### **Attention:**

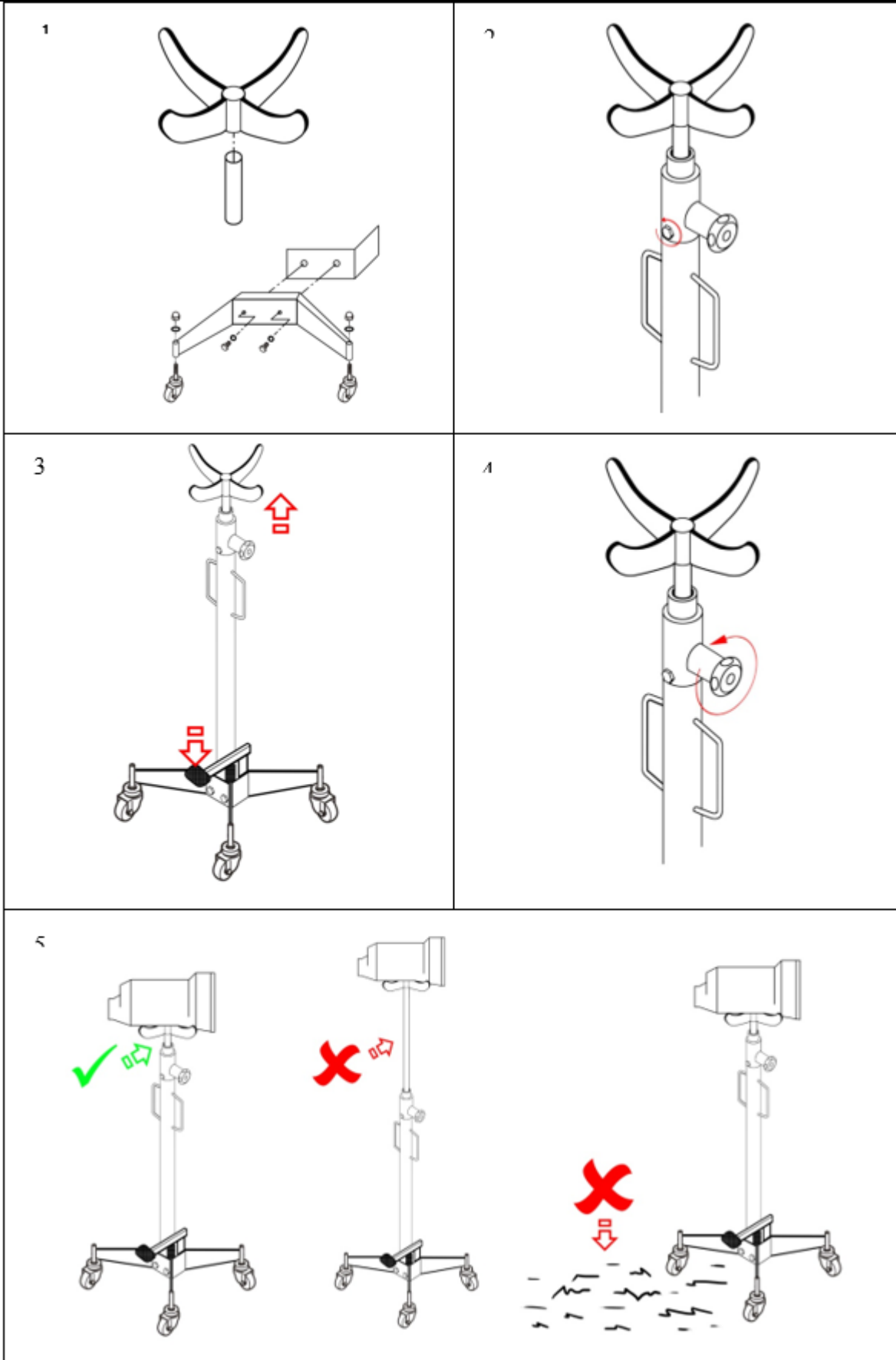
Always consider the maximum loading capacity of the transmission jack and do not exceed it under any circumstances.

Further note that the transmission is only suitable for transporting loads across short distances and only if the retainer is set to its lowest position, meaning that the hydraulic piston rod has been retracted completely. Always make sure the load has been securely placed in the middle of the retainer and cannot slide off the device.

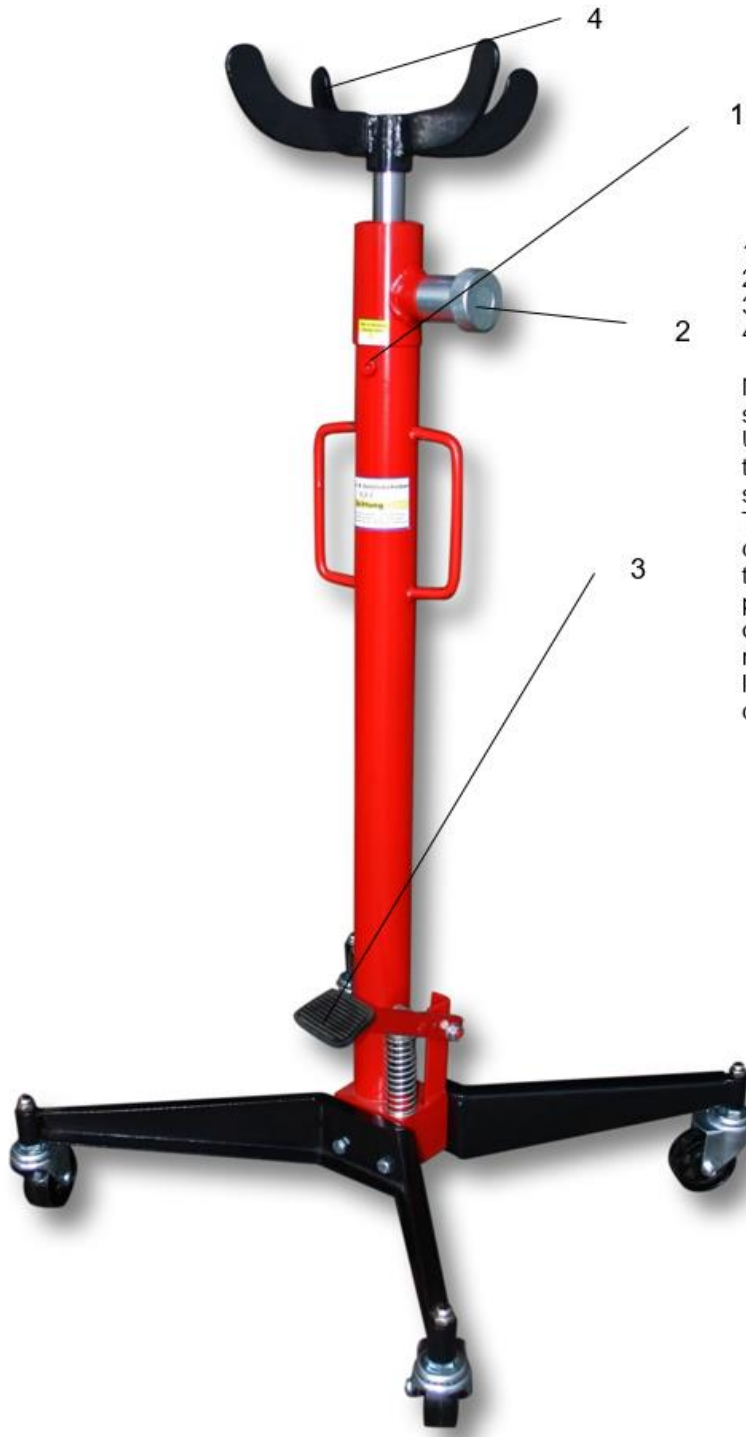
- Do not exceed the capacity of the transmission jack.
- In order to move parts such as rear axles, special positioners have to be used.
- Before working on vehicles, always ensure that the same has safely been placed upon the auto hoist and cannot tilt or fall down during the insertion or removal of the gearbox.
  - Ensure that loads transported with the transmission jack have been properly placed in the centre of the retainer in order to prevent them from tilting or sliding off the device.
  - This transmission jack was designed for usage on even ground, capable of withstanding the combined weight of it and its load. Using the device on uneven ground might cause its load to fall off.



Failing to abide by these instructions may cause damage to the device, its load and its surroundings and may lead to severe injuries.



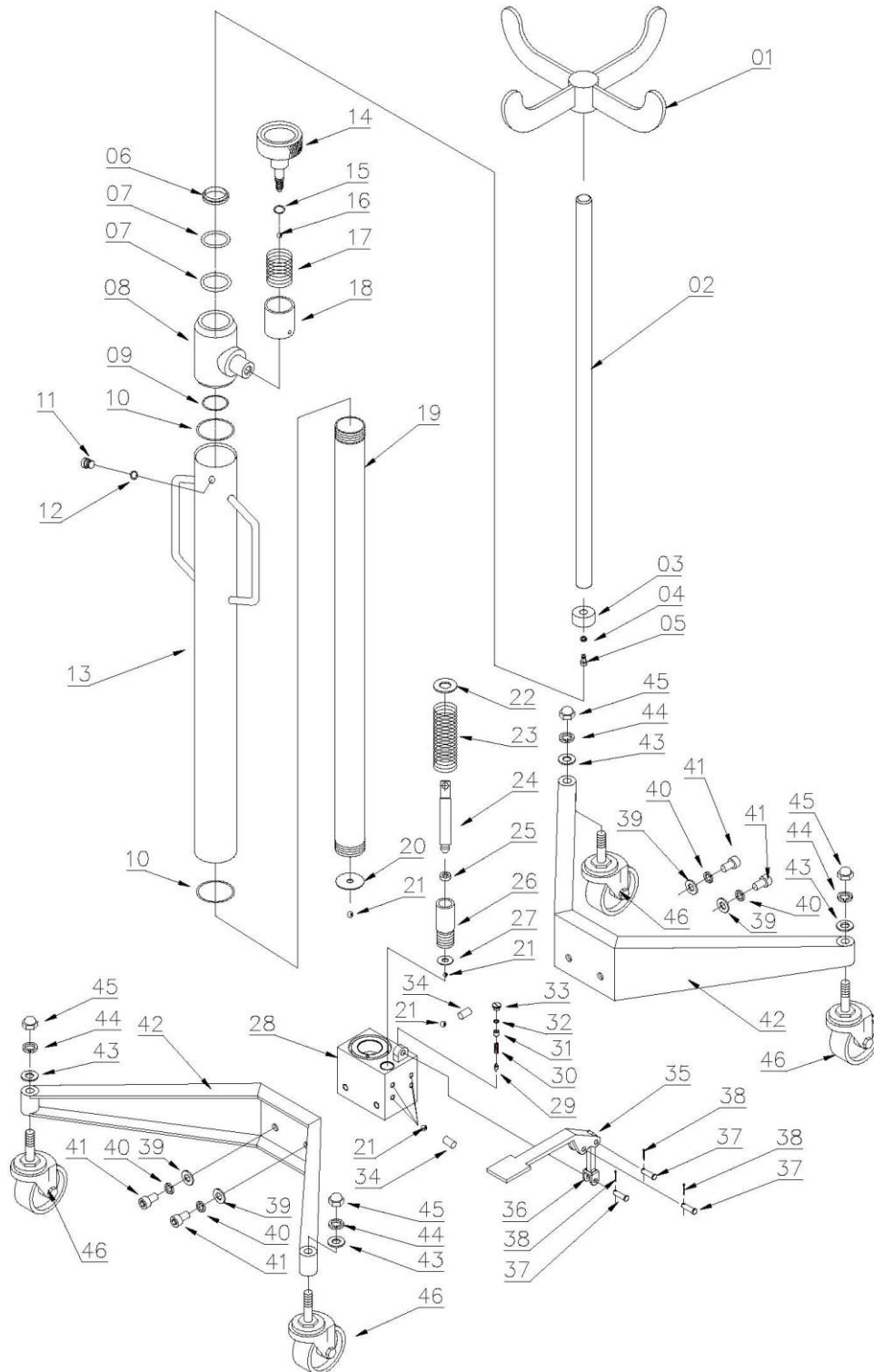
## Quick Guide



1. Drain screw
2. Hand wheel
3. Pedal
4. Retainer

Make sure to loosen the drain screw (1) before using the device. Use the pedal (3) in order to extend the hydraulic piston rod until the desired height has been reached. Turn the hand wheel (2) counter-clockwise and hold it in that position in order to lower the hydraulic piston rod. Let go of the hand wheel once the desired height has been reached. Always make sure that loads are properly positioned in the centre of the retainer (4).

## Engineering drawing





## Parts List

Number		Quantity
1	Retainer	1
2	Hydraulic piston rod	1
3	Hydraulic piston head	1
4	Spring washer	1
5	Hexagon socket screw	1
6	Ring cover	1
7	O-ring	2
8	Sleeve	1
9	O-ring	1
10	O-ring	1
11	Cover	1
12	O-ring	1
13	Main frame	1
14	Hand wheel	1
15	O-ring	1
16	Sphere	1
17	Torsion spring	1
18	Sleeve	1
19	Cylinder	1
20	Cylinder bottom	1
21	Sphere	3
22	Washer	1
23	Spring	1
24	Piston	1
25	O-ring	1
26	Pump unit	1
27	Washer	1
28	Pump body	1
29	Sphere	1
30	Spring	1
31	Nut	1
32	Washer	1
33	Screw	1
34	Sleeve	1
35	Pedal	1
36	Pedal retainer	1
37	Stud	3
38	Splint pin	3
39	Washer	4
40	Spring washer	4
41	Hexagon socket screw	4
42	Stand	2
43	Washer	4
44	Spring washer	4
45	Acorn nut	4
46	Castor	4

Important notice:

The reprint or reproduction, even of excerpts, and any commercial use, even partial, of this instruction manual require the written permission of WiITec Wildanger Technik GmbH.

## EG-Konformitätserklärung

Declaration of Conformity / Declaration de Conformity

(gemäß den Richtlinien 2006/42/EC Maschinenrichtlinie)

Reference Nummer: No. 0B190110.ZZM0U75

Firma / Company / Société

WilTec Wildanger Technik GmbH  
Koenigsbenden 12  
52249 Eschweiler, Deutschland

erklärt, dass das Produkt:

Getriebeheber

Type:

ZX0102 Artikel: 50795

Verwendungszweck:

Montagearbeiten von Getrieben und  
Fahrwerken bis 0.5 Tonnen

mit den folgenden EG-Rats-Richtlinien übereinstimmt:

This appliance is in conformity with the following european directives:

Cet appareil est conform aux diirectives européennes:

### 2006/42/EC

Es ist nach folgenden harmonisierten Normen geprüft worden:

It has been tested with the following harmonised standards:

Il a été testé à partir des norms harmonisées suivantes:

EN ISO 12100::2010,  
EN 1494::2000+A1::2008,

Bevollmächtigter für die Zusammenstellung der technischen Unterlagen:

Bernd Wildanger, Geschäftsführer WilTec Wildanger Technik GmbH  
Königsbenden 12  
52249 Eschweiler  
Deutschland

Eschweiler, 10. Januar 2019  
Ablaufdatum 09. Januar 2024



---

*Bernd Wildanger*  
Geschäftsführer