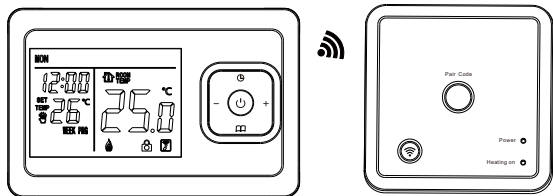


## Wireless smart thermostat user manual



### Application

ME901 is smart wifi wireless low power consumption heating thermostat with LCD display. It's designed for electric actuated valve control of water heating system. It's weekly programmable and possible to set 6 periods each day with different temperature. Through temperature valve between room environment and setting temperature, it's possible to control heating through wireless remote and App, you can also choose manual control and period control.

### User operation:

**Power key** : Press "⏻" to turn the thermostat on or off.

**Mode key** : Press "📖" to switch "period control mode" or "manual mode".

**+ - Up/down key** : Press "+ -" to set the temperature and adjust the system parameter.

**Clock key** : Press "🕒" to set time and week when the thermostat is on.

**Lock key** : Press "🔒" button for 5 seconds, if the lock icon appears in the key right corner of the display, it indicates the lock is successful.

### Anti-frozen function

In the state of shutdown, the thermostat will turn on the heating device automatically, When the room temperature is below 5°C. when the room temperature is above 7°C, the thermostat will turn off the heating device automatically.

### Programming

In the shutdown state, long press "mode" key for 5 seconds to enter programming mode, you can switch the parameter by "🕒". In the first period under entering programming mode, press "🕒" to adjust hours, press "🕒" again to adjust minutes, then press "🕒" to adjust the temperature. The next period setting is same as first period.

### Programming icon:

1. Wake-up 2. Leave 3 Return(am) 4. Leave(pm)  
5. Return(pm) 6. Sleep

Key	Event	Time	+/-	Default value	+/-
🕒	Week day	1	06:00	20°C	Set temperature
		2	08:00	15°C	
		3	11:30	15°C	
		4	12:30	15°C	
		5	17:00	22°C	
		6	22:00	15°C	
	Weekend	1	08:00	22°C	
		2	23:00	15°C	

### Advanced setting

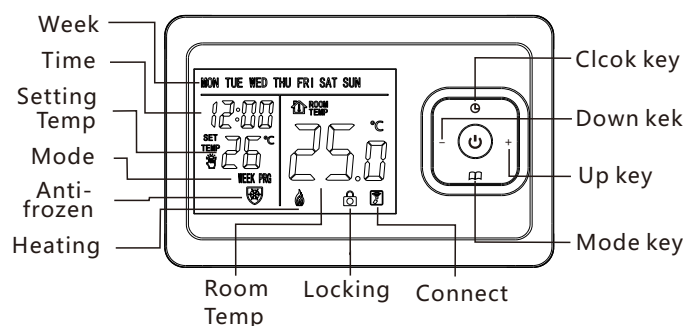
Press "🕒" for 5 seconds, then enter the mode of advanced setting, when the thermostat is off. The following functions can be switched by "🕒", and press to set the parameters.

Symbol	Setting	Default value	+ or -
1	Temperature calibration	-2	Adjust measured temperature range:-9~-9°C
2	Switching differential	1°C	Adjust switching differential range:1-5°C
3	Anti-frozen function	ON	Turn on(01)/off(00) Anti-frozen function
4	Kinds of periods of time mode	01	OF: Close 01:5+2 day mode 02:6+1 day mode 03:7+0day mode
5	Max. temperature	40	Adjust range:30°C~90°C
6	Set the lower limit of temperature	10	Adjust range:5°C~20°C
7	Reset to factory settings		Press "+" and hold for 5s, all parameters will de rest

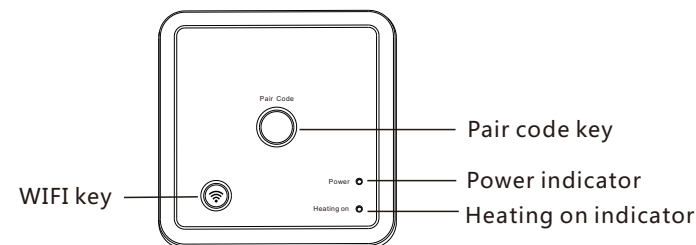
### Technical data

- Power supply: 2 pcs No.7 battery
- Temperature sensor: NTC
- Temperature accuracy :  $\pm 1^{\circ}\text{C}$
- Temperature range: 0~90°C
- Power consumption : <1W
- Temperature setting range: 5~90°C
- Ambient temperature: 0~50°C
- Load current: 3A
- Wireless receiver: AC230V,50/60Hz
- Wireless transmission distance: 100~200m in the open area.
- Wireless frequency: 868MHZ/433MHZ
- Wifi protocol: Tuya
- Wifi frequency: 2.4G
- Electrical safety standards: GB14536.1-2008 GB14536.10-2008

### Thermostat icon



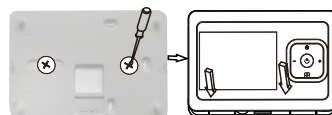
### Receiver icon



### Pair operation

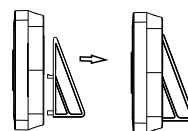
- Press power button on receiver for 5 seconds, then enter coding status, while the red power indicator flicker.
- When the thermostat turns off, press "power button" for 5 seconds to enter coding status. When the thermostat displays address "0000", then press mode button, the "0000" flicker, press clock button to switch "high or low" address, press "+ -" button to adjust address parameter, press mode button to confirm. Until the red light on receiver stops flickering (it means pair code failed, if red light flickers), press mode button again to confirm, when the screen displays "ADDR" it's successful. Press power button to exit. When the screen display "📶", it has been successful to connect with receiver.

### Thermostat mounting steps



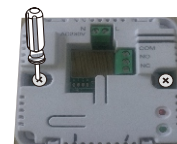
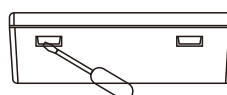
- Use screw to make plate fixed in box.
- Mount the thermostat into plate.

### Thermostat placing steps

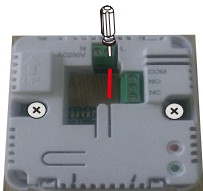


- Put the stand into the pedestal
- Put the thermostat with stand on the desk.

### Receiver mounting steps



1. Open the receiver with screwdriver
2. Use screws to make the bottom fixed into box.



3. Connect the power supply box according to the wiring diagram.
4. Put the cover back to complete installation.

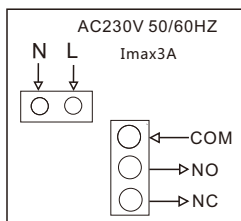
## Common failure handling

Failure	Handling
Crash	1.Check the power supply wiring is correct or not . 2.Check the power key .
LCD display garbled	1.The shell is deformed after installation can be reinstalled.
Display normal No output	1. Check whether the wiring between the MPU and the power board is damaged. 2.Check whether the null line of live line is connected wrong.
Remote failure	Check if the remote control battery has enough power , if not replace the battery.

## Warranty and after-sales service

Since the date of products sold for 2 years warranty. In the warranty period, such as human factors or irresistible damage caused by power failure is not covered by the warranty, beyond the warranty period or damage caused by human factors, need to return to the maintenance company, as the case charged a certain maintenance fee.

### Wiring diagram



## 1)Thermostat network steps

Press" "on receiver for 5 seconds, when the power indicator is off and heating on indicator flicker, then enter the initial state of network.Ensure that the router or WiFi device is on and within 5 meters,when the power indicator is on and heating on indicator stops flickering, it's successful to connect.

## 2)Mobile phone networking steps

Before configuring WIFI , please make sure your phone is connected to 2.4GHz WIFI.

1. Use your mobile phone to scan the QR code below to download the " Tuya Smart " app.

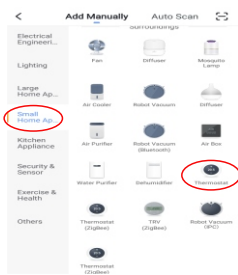
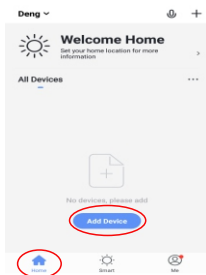
China



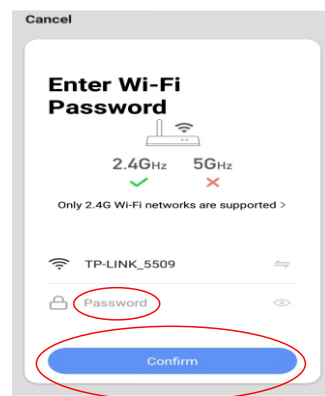
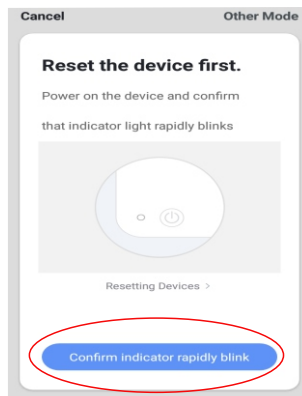
Foreign



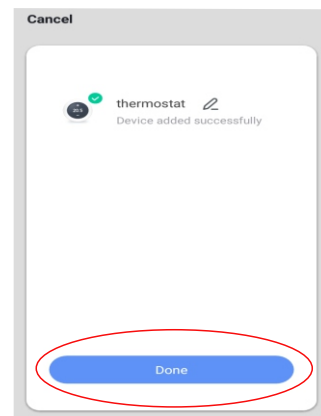
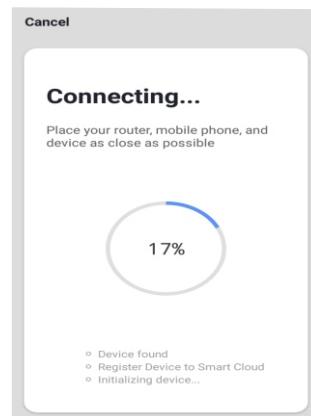
- 2.Open the" Tuya Smart "app and click" Add Device "as shown below.
- 3.After clicking" Small Home Appliances", select "Thermostat" as shown below.



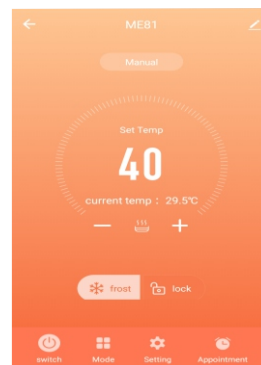
- 4.Click" **confirm indicator rapidly blink** " as shown below.
- 5.After entering the WIFI password, press" **Confirm** " as shown below.



- 6.The phone enters the device search and the connection mode is as shown below.
- 7.The mobile phone adds the device connection successfully, click " **Done** " as shown below.



- 8.Click on the" **Done** " button above to enter the control interface as shown below.



## 3) Device sharing instructions

- 1,Click" " in the upper right corner of interface.
- 2,Click " **share Device** ".
- 3,Click" **Add sharing** ".
- 4,Click " **Done** "after entering the account number.

## 4)Thermostat and mobile phone Exit the network

Press" " on receiver for 5 seconds, when the power indicator is off and heating on indicator flicker, the control panel enter the initial state of network, at this time, the receiver enter network exit(also the distribution network state).