

# FILING CABINET

## ASSEMBLY INSTRUCTIONS

Thank you for choosing to purchase from Piranha Furniture. We trust everything is as expected, however if there are **ANY** issues at all or you have further questions, please don't hesitate to email us and we will resolve the matter as quickly as possible:

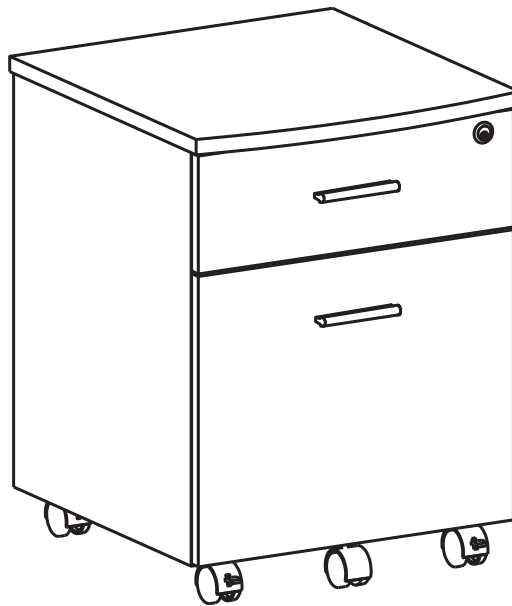
**United Kingdom:** [sales@piranhafurniture.com](mailto:sales@piranhafurniture.com)

**Rest of EU:** [info@piranhaeurope.com](mailto:info@piranhaeurope.com)

You can contact us through our website [www.piranhafurniture.com](http://www.piranhafurniture.com) where you will also find our full range of products.

**Please read the assembly instructions carefully before the installation**

**Retain all packaging as, if required, goods must be returned packed in the original cartons.**



**TWO PEOPLE REQUIRED**

**MODEL PC10**

**General Care:**

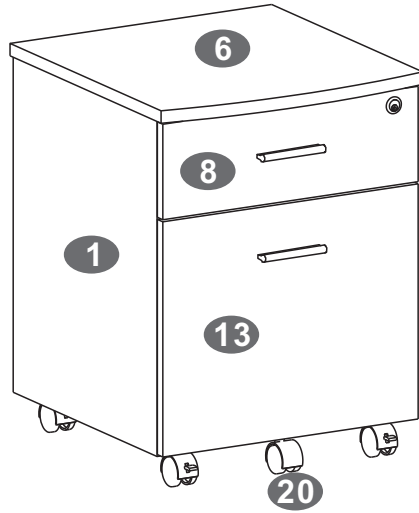
Keep furniture out of direct sunlight. Use mats and coasters to protect surfaces.  
Do not place hot or wet items directly onto unprotected surfaces.

**Cleaning:**

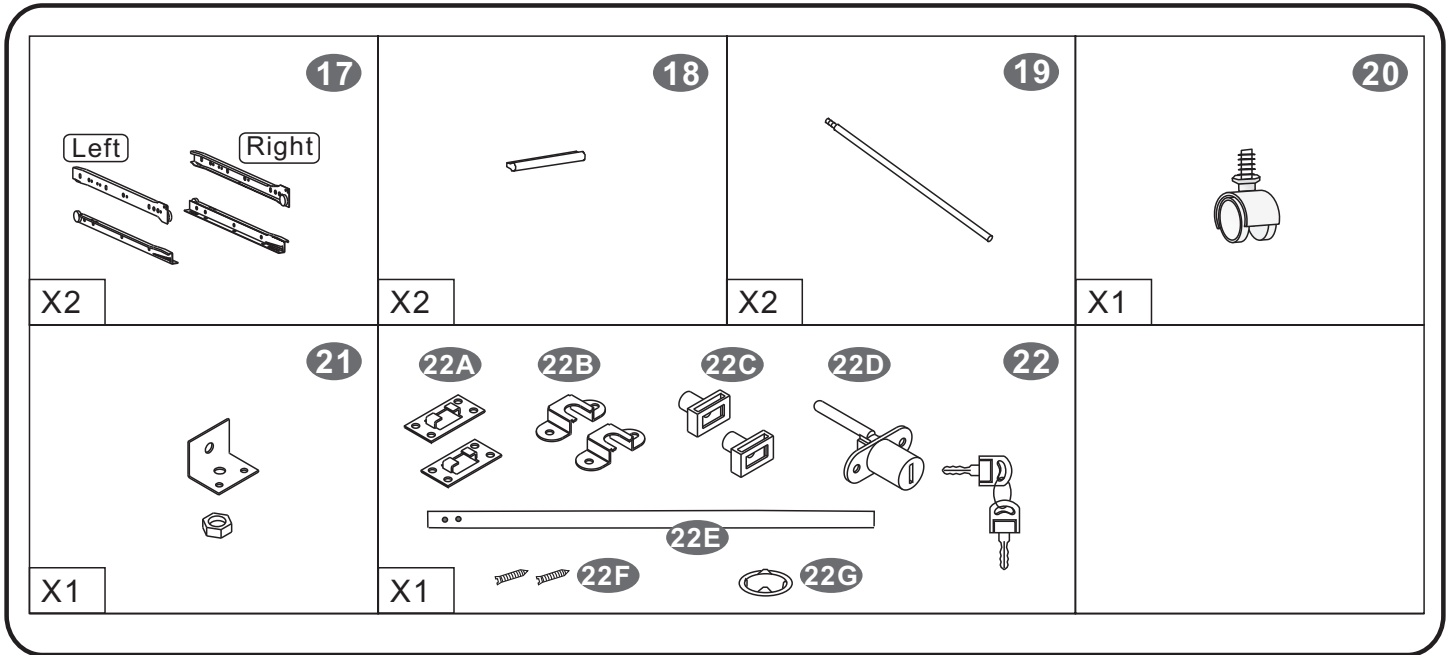
Wipe surfaces with a clean damp (not wet) cloth then dry with a clean lint free cotton cloth.  
Glass surfaces may be polished with window or other glass cleaning liquids.



▪PARTS LIST



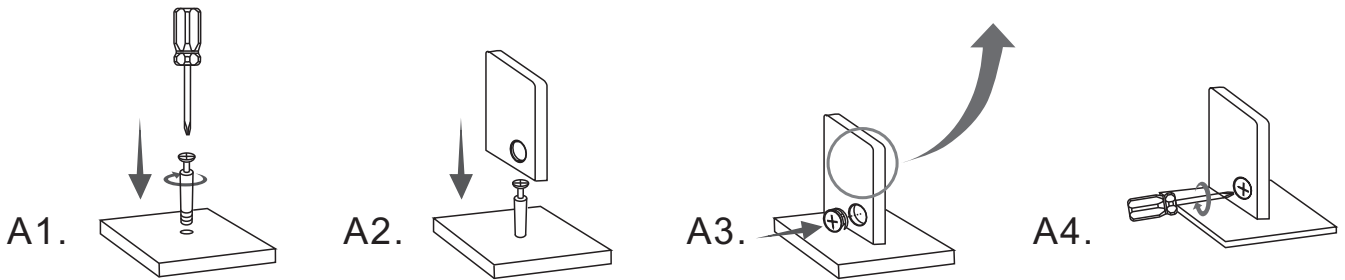
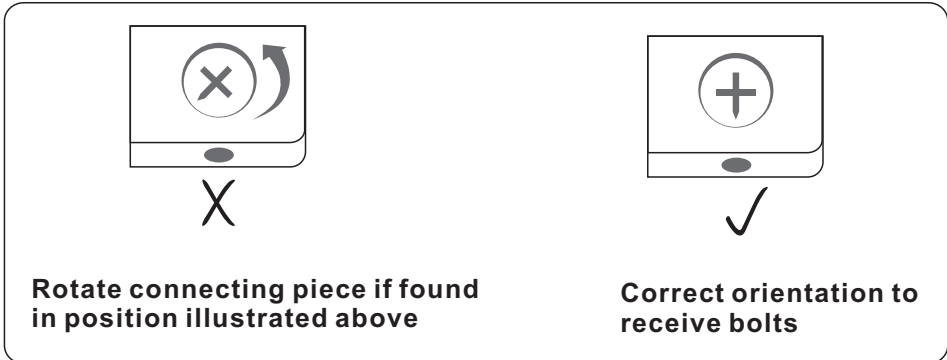
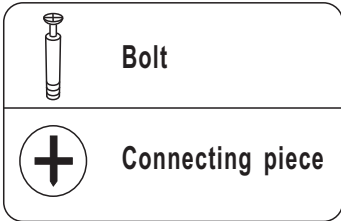
 X1	 X1	 X1	 X1
 X1	 X1	 X2	 X1
 X1	 X1	 X2	 X1
 X1	 X1	 X1	 X1



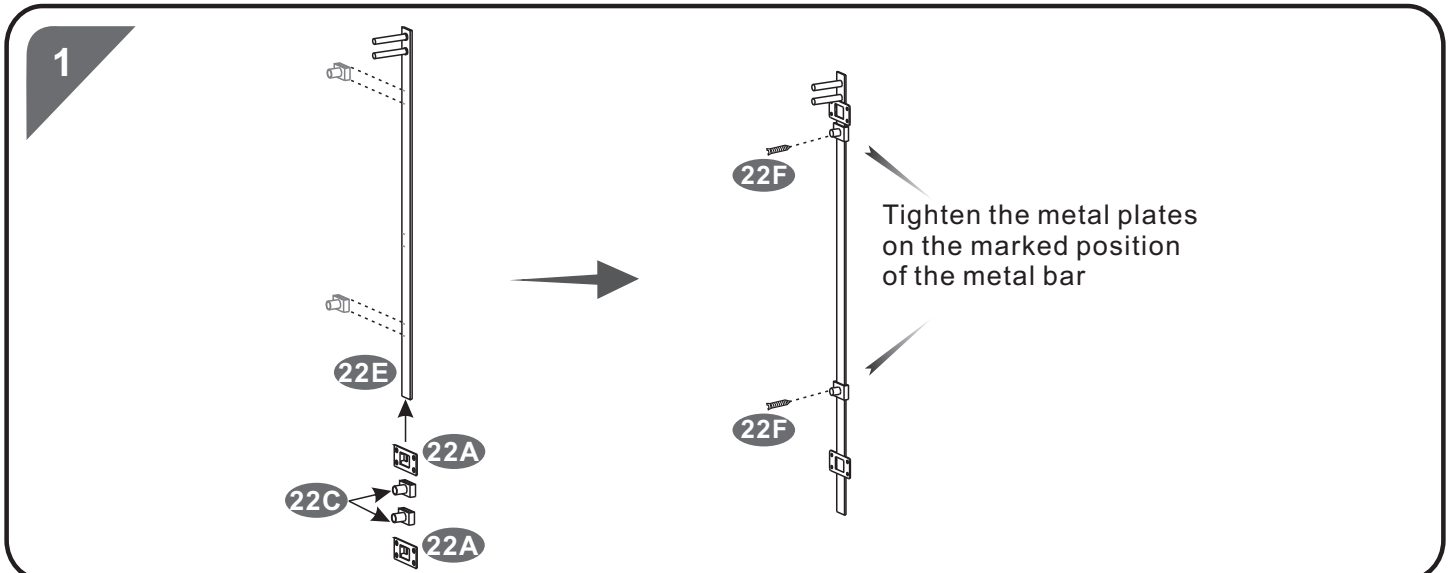
▪SCREWS LIST

PART	QTY.	ITEM		PART	QTY.	ITEM	
<b>A</b>	1	6X12 MM		<b>H</b>	4	3X12 MM	
<b>B</b>	12	6X40 MM		<b>I</b>	12	Φ 15 MM	
<b>C</b>	18	4X14 MM		<b>J</b>	8	Φ 12 MM	
<b>D</b>	8	4X35 MM		<b>K</b>	8	8X30 MM	
<b>E</b>	4	4X22 MM			1		
<b>F</b>	26	3X15 MM			1		
<b>G</b>	8	6X25 MM					

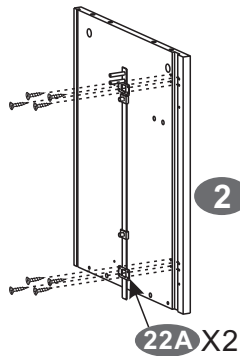
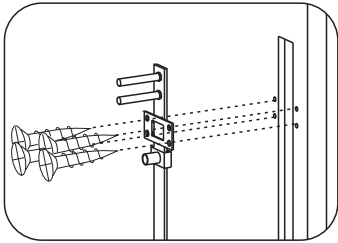
6X40MM 6X25MM BOLT INSTALLATION AS BELOW:



ASSEMBLY STEPS:



2



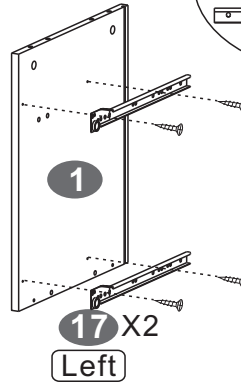
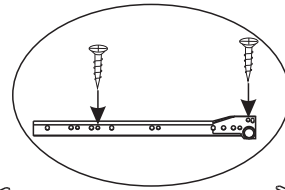
SCREWS

**F** 3X15 MM

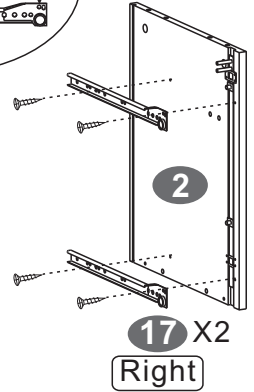
8PCS



3



Left



Right

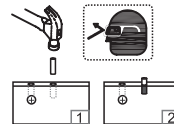
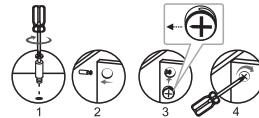
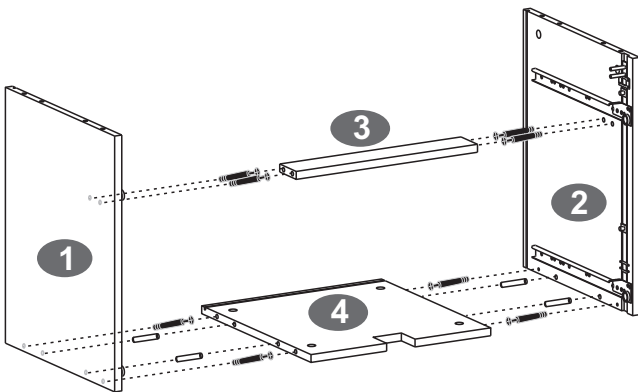
SCREWS

**F** 3X15 MM

8PCS



4



SCREWS

**B** 6X40 MM

8PCS



**L**  $\Phi$  15 MM

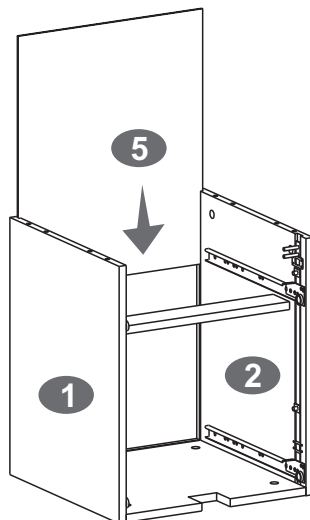
8PCS



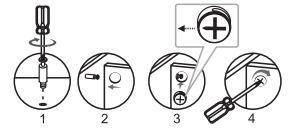
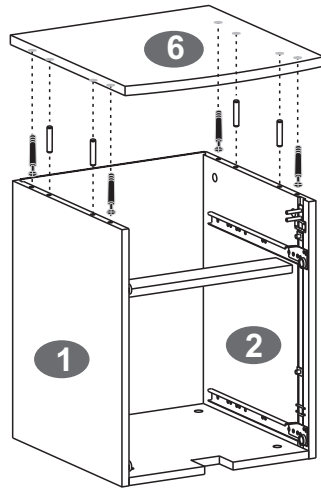
**K** 8X30 MM

4PCS

5



6

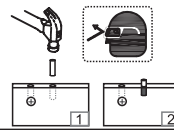


SCREWS

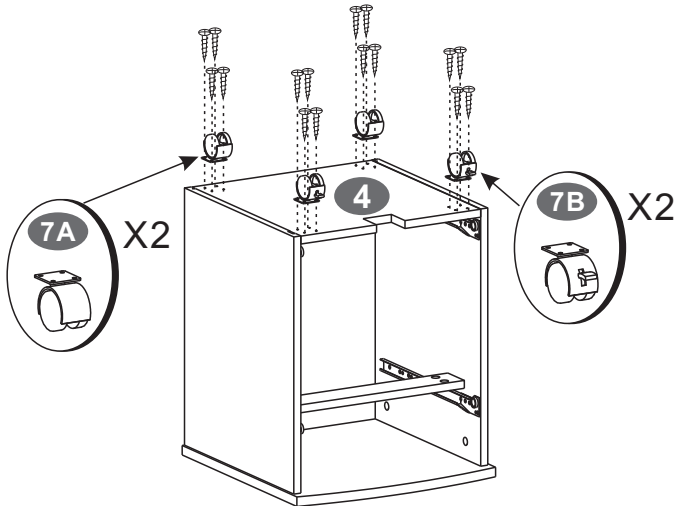
**B** 6X40 MM  
4PCS

**I**  $\Phi$  15 MM  
4PCS

**K** 8X30 MM  
4PCS



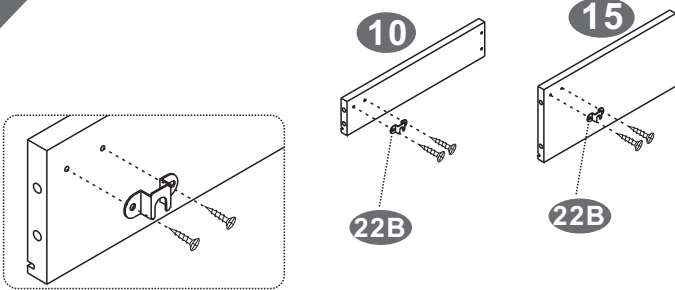
7



SCREWS

**C** 4X14 MM  
16PCS

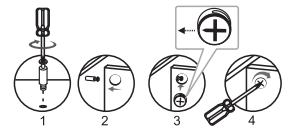
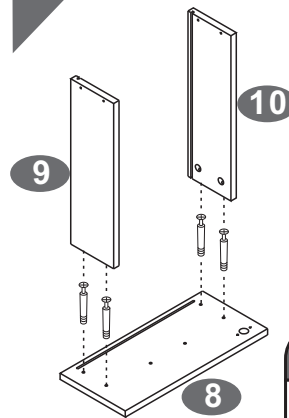
8



SCREWS

**H** 3X12 MM  
4PCS

9

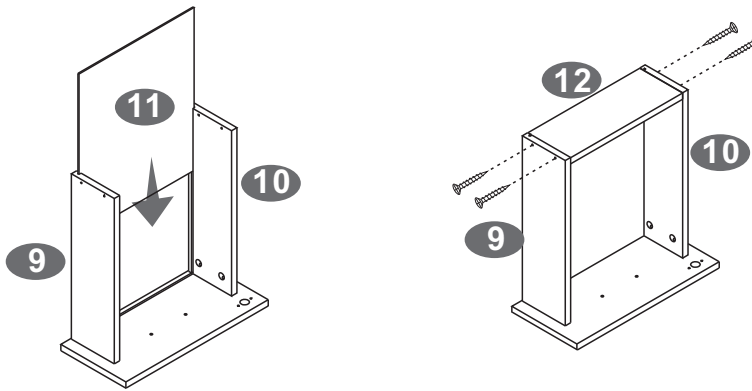


SCREWS

**G** 6X25 MM  
4PCS

**J**  $\Phi$  12 MM  
4PCS

10



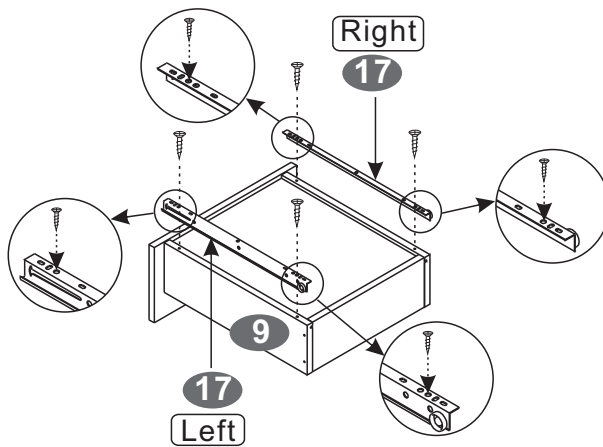
- SCREWS

**D** 4X35 MM

4PCS



11



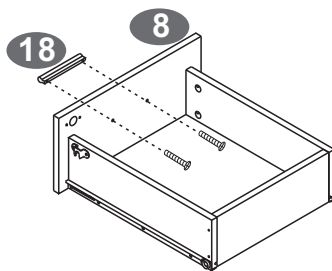
- SCREWS

**F** 3X15 MM

4PCS



12



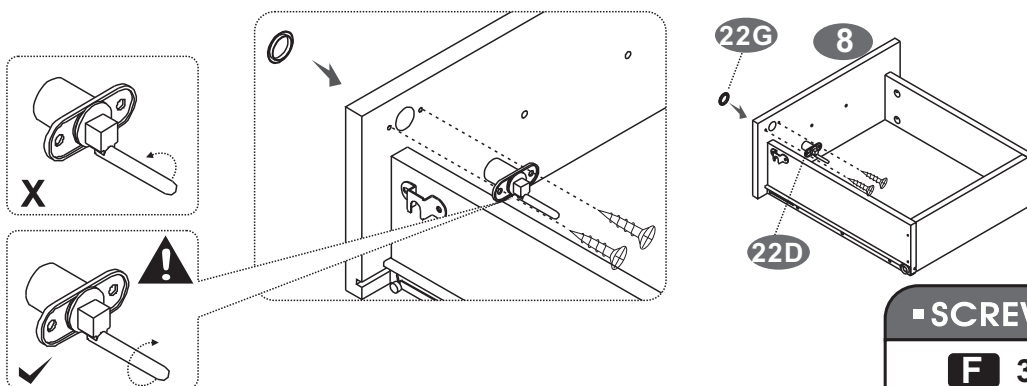
- SCREWS

**E** 4X22 MM

2PCS



13



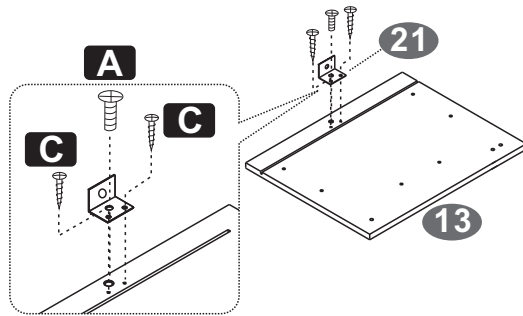
- SCREWS

**F** 3X15 MM

2PCS



14



■ SCREWS

**C** 4X14 MM

2PCS

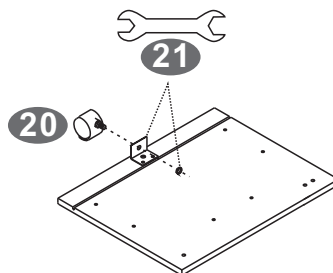


**A** 6X12 MM

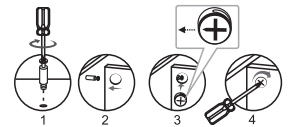
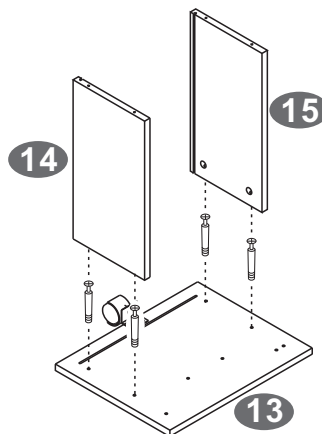
1PC



15



16



■ SCREWS

**G** 6X25 MM

4PCS

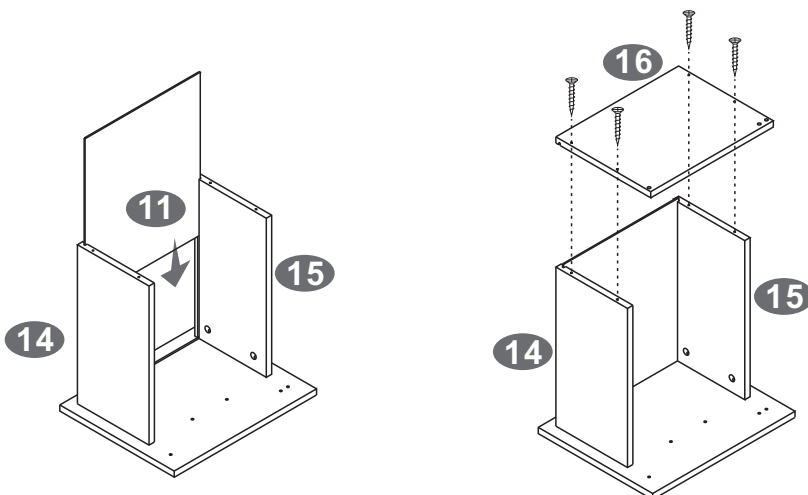


**J**  $\Phi$  12 MM

4PCS



17



■ SCREWS

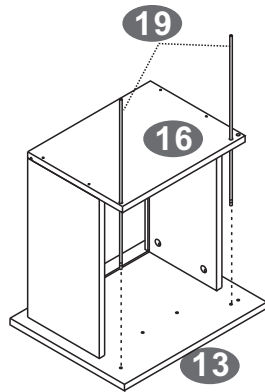
**D** 4X35 MM

4PCS



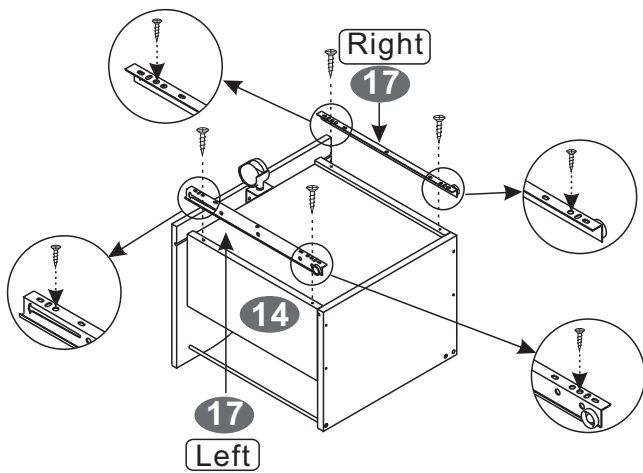


18



⚠ Be careful not to overtighten the metal rod

19



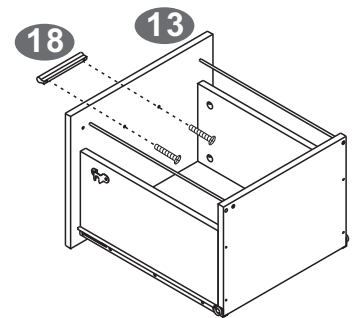
▪ SCREWS

**F** 3X15 MM

 4PCS



20



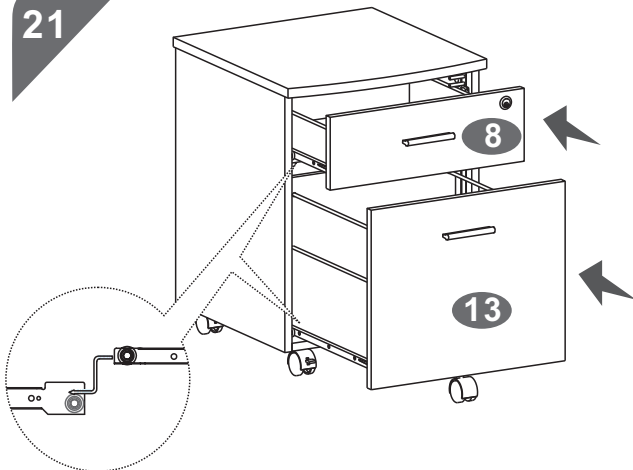
▪ SCREWS

**E** 4X22 MM

 2PCS



21



22

