

Operation Manual

Compressed Air Rivet Gun

51507



Illustration similar, may vary depending on model

Read and follow the operating instructions and safety information before using for the first time.

Technical changes reserved!

Due to further developments, illustrations, functioning steps and technical data can differ insignificantly.

Updating the documentation

If you have suggestions for improvement or have found any irregularities, please contact us.



The information contained in this document may alter at any time without previous notice. It is prohibited to copy or spread any parts of this document in any way without prior written allowance. All rights reserved.

The WilTec Wildanger Technik GmbH cannot be held accountable for any possible mistakes in this operating manual, nor in the diagrams and figures shown.

Even though, the WilTec Wildanger Technik GmbH has undergone biggest possible efforts to ensure that the operating manual is complete, faultless and up to date, mistakes cannot be entirely avoided.

If you should find a mistake or wish to make a suggestion for improvement, we look forward to hearing from you.

Send an e-mail to:

service@wiltec.info

or use our contact form:

<https://www.wiltec.de/contacts/>

The most recent version of this manual in various languages can be found in our online shop via:

<https://www.wiltec.de/docsearch>

Our postal address is:

WilTec Wildanger Technik GmbH
Königsbenden 12
52249 Eschweiler
Germany

Do you wish to pick goods up? Our pick-up address is:

WilTec Wildanger Technik GmbH
Königsbenden 28
52249 Eschweiler
Germany

To shorten the waiting time and allow for a rapid on-site transaction, we ask you to call us previously or placing your order via the webshop.

E-mail: service@wiltec.info
Tel: +49 2403 55592-0
Fax: +49 2403 55592-15

To return orders for exchange, repair or for other purposes, please use the following address. Attention! To allow for a smooth execution of your complaint or return, it is important to contact our customer service team before returning the goods.

Returns Department
WilTec Wildanger Technik GmbH
Königsbenden 28
52249 Eschweiler

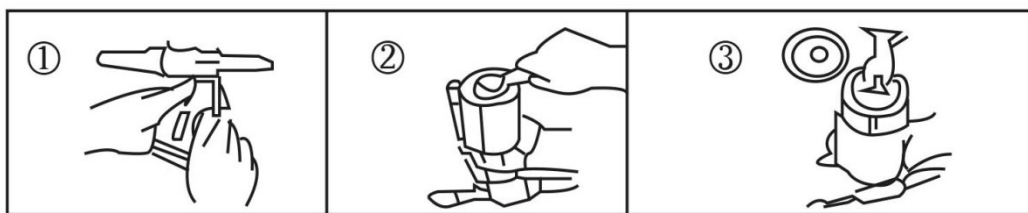
E-mail: service@wiltec.info
Tel: +49 2403 55592-0
Fax: +49 2403 55592-15

Introduction

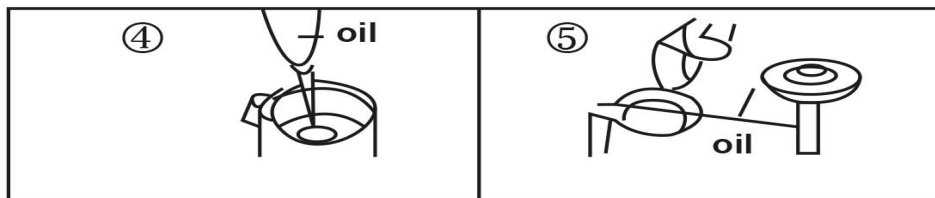
Thank you for purchasing this quality product. **To minimize the risk of injury we urge that our clients take some basic safety precautions when using this device. Please read the operation instructions carefully and make sure you have understood its content.** Keep these operation instructions safe.

Maintenance and adding oil for Hydraulic Riveter

1. Disconnect the air hose.
2. Use an adjustable or combination wrench (not included) to take apart the head as shown in fig. 1.
3. Use the spanner to open the bottom cover as showed in fig. 2.
4. Remove the piston of the cylinder as showed in fig. 3.



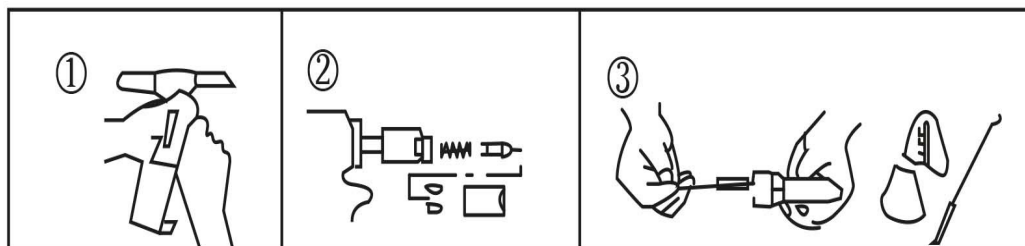
5. Clean the inside of the cylinder and the frame body.
6. Fill the lubricate oil as shown in fig. 4.
7. Clean the piston stem, apply grease to the inner wall of the cylinder and the O-ring as shown in fig. 5.



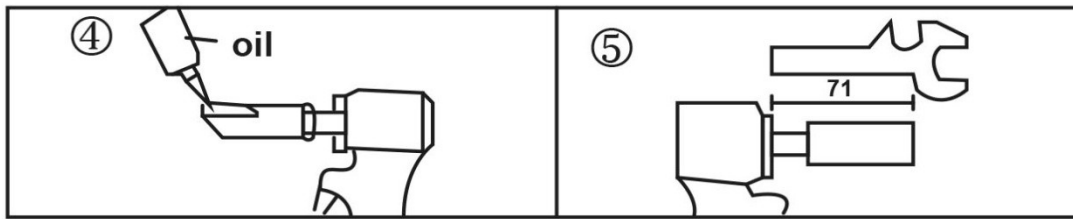
8. Reassemble the riveter by following the disassembly procedure in reverse.

Maintenance of the riveter head

1. Disconnect the air hose.
2. Use the spanner to take apart the head as shown in fig. 1.
3. Use the spanner to take apart the parts as shown in fig. 2.
4. Clean all the parts and the inside of the head as showed in fig 3.

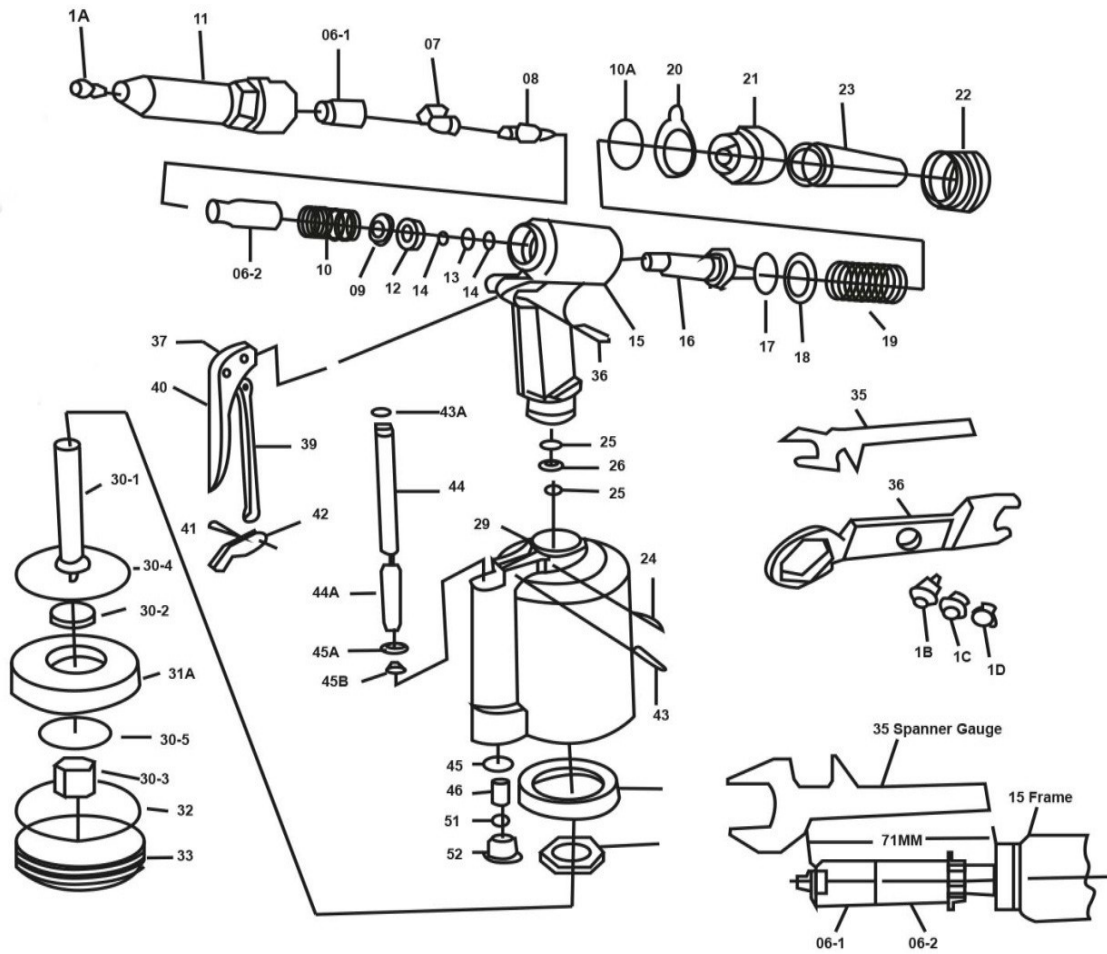


5. Apply lubricate oil as shown in fig. 4.
6. Check the length as shown in fig 5.



7. Reassemble the riveter head by following the disassembly procedure in reverse order.

Explosion view and parts list





Part №	Name	Part №	Name
1A	Nosepiece ($\frac{3}{16}$ "	27	Frame lock nut
1B	Nosepiece ($\frac{5}{32}$ "	28	Rubber cushion
1C	Nosepiece ($\frac{1}{8}$ "	29	Air cylinder
1D	Nosepiece ($\frac{3}{32}$ "	30-1	Air piston stem
06-1	Jaw case	30-2	Air piston al
06-2	Rear jaw case	30-3	Air piston lock nut
07	Jaw	30-4	Big iron plate
08	Jaw pusher	30-5	Small iron plate
09	Case washer ring	31A	Air piston ring
10	Jaw pusher spring	32	Cylinder O-ring 67.94×2.62
10A	Frame cap o-ring 27×2	33	Cylinder cap
11	Frame head	35	Spanner gauge
12	Case lock nut	36	Spanner
13	Back up ring	37	Trigger pin
14	Back up o ring P12	38	Connector
15	Frame	39	Trigger rod
16	Oil piston	40	Trigger
17	Oil piston O-ring P22A	41	Connector
18	Back up ring	42	Trigger lever
19	Return spring	43	Lever pin
20	Hanging clip	43A	Valve pusher O-ring P7
21	Frame cap	44	Valve pusher
24	Setting screw pin	44A	Valve spring
25	Back up O-ring 12	45	Valve
26	Back up ring	45A	Valve collar
22	Frame cap nut	45B	Collar O-ring P5
23	Safety cap	46	Valve spring
		51	Valve cap O-ring P11
		52	Valve cap

Important notice:

The reprint or reproduction, even of excerpts, and any commercial use, even in part of this instructions manual require the written permission of WilTec Wildanger Technik GmbH.