

Operation Manual

55550 - CET-26000



Read and follow the operating instructions and safety information before using for the first time.

Technical changes reserved!

Due to further developments, illustrations, functioning steps and technical data can differ insignificantly.

Updating the documentation

If you have suggestions for improvement or have found any irregularities please contact us.

The information contained in this document is subject to change without prior notice. No part of this document can be copied or duplicated in another form without the prior written consent of WilTec Wildanger Technik GmbH. The WilTec Wildanger Technik GmbH assumes no liability for any errors in this user manual or the connection diagram.

Although WilTec Wildanger Technik GmbH has made every effort to make sure that this user manual is complete, accurate and updated, errors cannot always be avoided. In the event of problems with this user manual please complete and send this form back to us.

FAX-notification (+++49 2403 55592-15),

from: _____

Name: _____

Firm: _____

Tel/Fax: _____

I would like to report the following mistakes:

Customer Service WilTec Wildanger Technik GmbH

e-mail: service@WITec.info

Tel:++ +49 2403 55592-0

Introduction

Thank you for purchasing this quality product. **To minimize the risk of injury by means of fire or electric shock we urge that our clients take some basic safety precautions when using this device. Please read the operation instructions carefully and make sure you have understood its content.**

Always use a grounded power connection with the appropriate mains voltage. You can find the corresponding mains voltage on the type plate. If you have any doubts about the connection being grounded, have it checked by a qualified professional. Never use a faulty electric cable.

Do not inspect the electrical part of the pressure pond filter in a wet or damp environment or when you are wet yourself and protect it from direct sunlight. Install this device in a safe location so that nobody can step on the cable, fall over or damage it. Disconnect the power plug before cleaning it and use only a damp cloth for cleaning. Avoid using cleaning agents and make sure that no liquid enters the electrical part of the pump.

The electric part of the device contains no parts that can be inspected or serviced by the user. Leave the maintenance, adjustment and repair to qualified technical personnel. In case of unauthorised intervention the 2-year warranty is no longer valid! Keep these operation instructions safe.

Caution

- (1).For your own safety, please contact an electrical professional in case of questions and problems.
- (2).Do not connect the power supply when the all parts are not installed.
- (3).The pump can only be plugged in a socket with leakage protection. This type of outlet must have been set up according to the respective national directives (VDE,EN...IEC, etc.) Insure that the PE conductor extends all the way to the pump.
- (4).Make sure the voltage in the pump is the same with the actual power supply.
- (5).Electrical installations on garden ponds must correspond to the international and national installation directives.
- (6).Only operate the pump if no one in the water.
- (7).Do not carry or pull the pump by the connecting cable, avoid the cable over heart, greasy or touch acute angle.
- (8).The pump may not be operated if the cable or the housing are defective!
- (9). Never displace any liquids other than water.
- (10).Attention: the pump will automatically stop working if overload or without water. As long as plug in the power again, water pump will go back to work.
- (11).when outdoor use, the controller must be kept in upright position.

Application

- 1.Apply to ponds, rockery, bourn, aquarium tanks with water recycling equipment matching.
2. Suitable for seafood pool, aquarium circulating water supply and drainage.

Features

- 1.Big flow rate, 10 grades flow rate adjustable.
- 2.Stainless steel filter case, more robust.
- 3.Five curved cases, to prevent blocking.
- 4.New electronic frequency conversion technology, energy saving.
- 5.Both fresh water and marine water.
- 6.Use ceramic shaft, good wear resistance and long service time.
- 7.IC electronic detection, automatic anhydrous protection and locked-rotor protection, abnormal error reporting .

Installation

- 1.Notify your dealer immediately if there are external damages.
- 2.Compare the line voltage (V) and frequency (Hz) of your electrical circuit with the data on the model plate, these data must agree.
- 3.when connecting pipe, drainage air in the pipe as far as possible (when the air blocking in the pipe, prone to idle protection).
- 4.Attention: the pump must below the level of water 20 cm at least, the placement surface must firm and maintain the pump level.
- 5.Do not place the pump directly in the pond floor mud, place it on a raised surface.
- 6.Connect the pump with the controller of four core wire, lock the nut, as pic 1:




- 7.Connect the power supply of the controller.



Controller operation instructions



1.ON/OFF



Plug in and touch  to control the pump on and off.
PS: if does not use this device for long time, please power off.

2.Flow rate adjusting



Press  or  to adjust the flow rate, totally 10 levels, and screen will show SP01~SP10. detailed please refer to the parameter list.

3.Feeding mode

Model	No.	Voltage	Grade	Power(W)	Flow Rate (L/H)	Head (M)
CET-26000	55550	220-240V 50Hz	1	80	13000	2.8
			2	100	14000	3.4
			3	130	15500	4.0
			4	160	17000	4.5
			5	200	18000	5.1
			6	240	19000	5.8
			7	285	20500	6.5
			8	335	22000	7.2
			9	380	23500	7.8
			10	450	26000	8.5

Long press  3secs to enter time delay start mode, and the screen will show FD10. The device will start to work after ten mins. Again, long press  3 secs to quit feeding mode.

4.LOCK function

Long press  to lock the keys, and the screen will show LOC. Long press  to unlock the keys.

5.Automatic memory function

When the controller power off accidentally, device will recovery last working condition automatically after power on.

Controller accident after the power on the electric automatic recovery last working condition.

6.An error report

the pump will automatically stop working if without water running more than 30secs, then re-start after 3secs, repeat 5 times and then power off permanently, error report says Er03; when pump will automatically stop working if blocked, and error report says Er02.

PS: After trouble shooting, water pump will go back to work as long as plug in the power again.

7.The definition of instruction code and trouble shooting.

Code	Definition	Status	Trouble shooting
P000	Power	Normal	/
SP01-10	Flow rate level	Normal	/
Fd10-01	Feeding mode	Normal	/
_LOC	Lock	Normal	/
Er01	Over or under voltage	Abnormal	Check input voltage(it is normal when cut off the power)
Er02	pump lock protection	Abnormal	Chek the pump whether stuck
Er03	Pump Idling protection	Abnormal	1.Check the pump whether work without water 2.Check whether there is air in the pipe
Er04	Over heater	Abnormal	Clean the pump
Er05	short-circuit current	Abnormal	Check the controller

Maintain and cleaning

Pump operation after a period of time, there will be many rubbish on the rotor part, if long-term no cleaning will not only affect the normal work, also can damage your pumps, so need to clean the rotor part regularly. please cut off the power supply when maintenance, cleaning steps are as follows:



1.Plis use hexagonal screwdriver screw off the 4 screws on the filter cover (as picture1) and 2 screws on the base plate(as picture 2), taking down the filter cover and base plate, picture 3 is showed when finished.

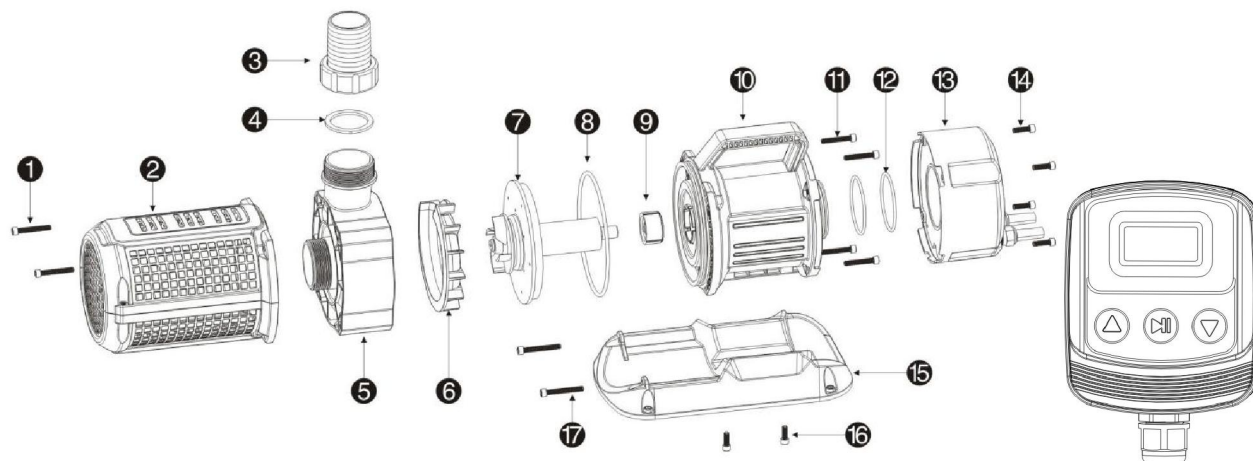
2.Plis use hexagonal screwdriver screw off the 4 screws on the impeller chamber(Like picture 4), taking down the impeller chamber, picture 5 is showed when finished.

3.Taking down the rotor, clean or replace it.

If not used for a long time, please take out the pump from the water, let it running in the clean water for a moment, and then clean the inner part, dry before collection.

When the temperature is lower than 0 , please take out the pump from water immediately in case of freezing damage.

Part List



No.	Name	No.	Name
1	screw M6*40	10	body
2	Filter Basket	11	screw M6*35
3	outlet	12	o-ring 2
4	gasket	13	back cover
5	impeller chamber	14	screw M6*20
6	vice impeller chamber	15	base plate

Disposal regulations

EU guidelines regarding the disposal of scrap electric appliances (WEEE, 2012/19/EU) were implemented in the law related to electrical and electronic equipment and appliances.

All WilTec electric devices that fall under the WEEE regulations are labelled with the crossed-out wheeled waste bin logo. This logo indicates that this electric equipment must not be disposed with the domestic waste.

The company WilTec Technik GmbH has been registered in the German registry EAR under the WEEE-registration number DE45283704.

Disposal of used electrical and electronic appliances (intended for use in the countries of the European Union and other European countries with a separate collection system for these appliances).

The logo on the article or on its packaging points out that this article must not be treated as normal household waste but must be disposed to a recycling collection point for electronic and electrical waste equipment. By contributing to the correct disposal of this article you protect the environment and the health of your fellow men. Environment and health are threatened by inappropriate disposal.



Materials' recycling helps reduce the consumption of raw materials.

Additional information on recycling this article can be provided by your local community, municipal waste disposal facilities or the store where you purchased the article.

Address:
WilTec Wildanger Technik GmbH
Königsbenden 12 / 28
D-52249 Eschweiler

Important notice:

The reprint or reproduction, even of excerpts, and any commercial use, even in part of this instructions manual require the written permission of WilTec Wildanger Technik GmbH.