

Made in CHINA by / Fabriqué en CHINE par / Hergestellt in CHINA von /  
Gemaakt in CHINA door / Fabricado en CHINA por / Prodotto in CINA da /  
Fabricado na CHINA por / Vyrobené v ČINE od / Vyrobené v ČINE od /  
Wyprodukowane w CHINACH przez: **Varan Motors**



Imported by / Importé par / Importiert durch / Geïmporteerd door / Importado  
por / Importato da / Importado por / Importované spoločnosťou / Dovezeno  
spoločnosťou / Importowane przez:

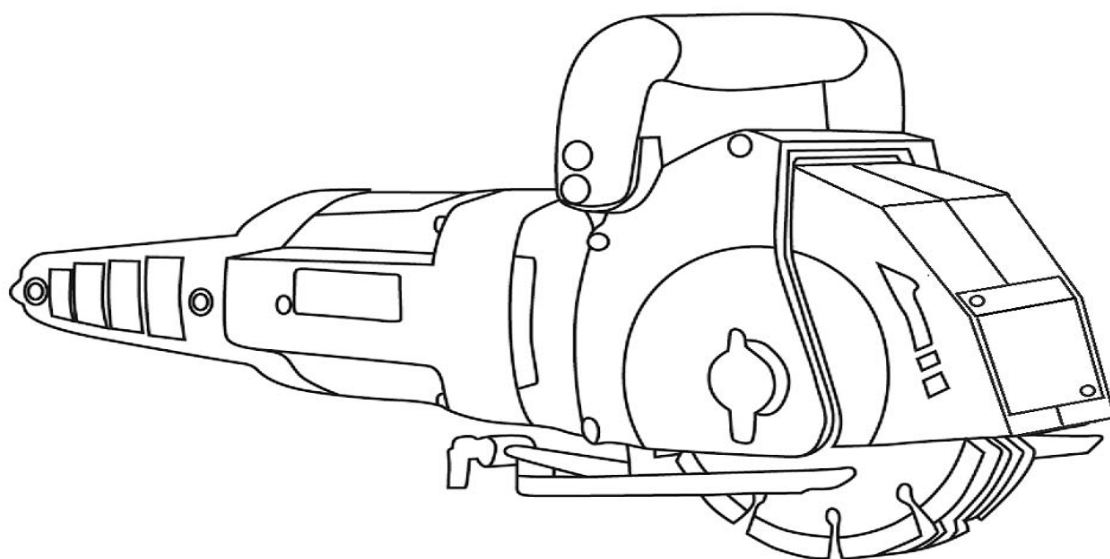
**BCIE SARL**  
**15 rue de Mensdorf,**  
**L-5380 Uebersyren,**  
**Luxembourg,**  
**+352/26908036**



"© 2024 BCIE SARL. All rights reserved."  
"© 2024 BCIE SARL. Tous droits réservés."  
"© 2024 BCIE SARL. Alle Rechte vorbehalten."  
"© 2024 BCIE SARL. Alle rechten voorbehouden."  
"© 2024 BCIE SARL. Todos los derechos reservados."  
"© 2024 BCIE SARL. Tutti i diritti riservati."  
"© 2024 BCIE SARL. Todos os direitos reservados."  
"© 2024 BCIE SARL. Všetky práva vyhradené."  
"© 2024 BCIE SARL. Všechna práva vyhrazena."  
"© 2024 BCIE SARL. Wszelkie prawa zastrzeżone."

# Wall cutting machine

## Operating manual



Safe operation of this machine is possible only when the operating instruction and the safety precautions are read completely and the instructions contained therein are strictly observed.



Always inspect cable and plug before using machine. Have damage repaired only by a qualified professional. Make sure machine is switched off before inserting its plug in the socket. Never touch the cable if it is damaged while you are operating it.



Always wear protective glasses, ear protection and mask.



Always wear protective gloves and clothing. Hold the machine with both of your hands and make sure that you can stand steady while operating the machine.

This tool is suitable for the hard brick, concrete block, light brick, concrete wall (ground) a forming slot and building materials such as granite, marble, ceramic tile cutting work.

## 1. Technical Parameters

Voltage: 220V – 240V

Frequency: 50/60 Hz

Rated Input Power: 3000 W

Max Loading Power: 4800 W

No-load Speed: 6500 r/min

Max cutting capacity: 38 mm width × 36 mm depth

Machine net weight: 7.2 Kgs

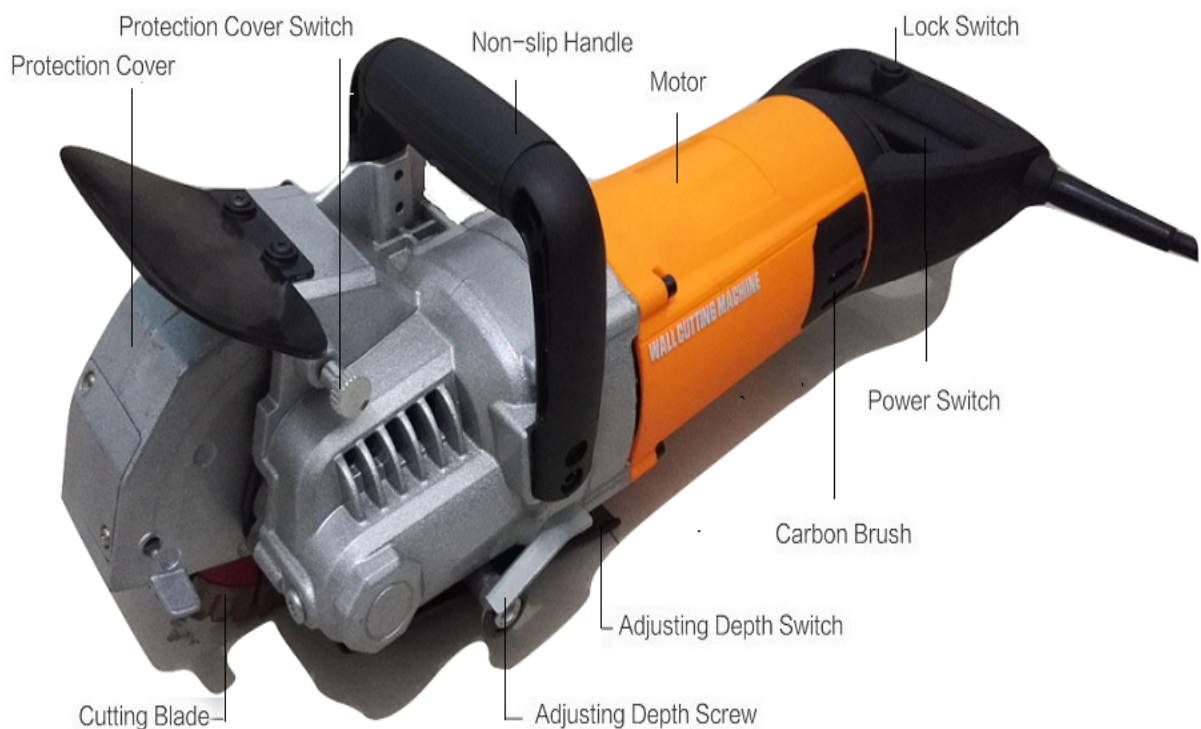
Machine gross weight: 11.13 Kgs

## 2. Symbols



**Warning signs: If any operation doesn't according to operation procedures, there will be personal injury or machine broken**

## 3. Machine's photo



## 4. Safety instructions

### a. Working environment

- (1) The working area should be keep clean. Lighting and ventilation is good.
- (2) Don't use this machine at flammable and explosive place.
- (3) Machine at work, be sure to stay away from children, bystanders and animals.

### B.Electrical safety

- (1) This machine have one electric leakage protection plug. Pls according to warning label procedures to operate.
- (2) Connect the power supply socket types should be provided with the machine's plug. Don't change any.
- (3) Don't use machine when outdoor raining day.
- (4) Don't use power line to pull machine. Avoid to not work because the poor contact.
- (5) The power line should avoid contact with heat, oil, and moving parts.
- (6) When use machine outside, pls use the outdoor extension 2 square millimeter above the power cord.
- (7) After starting, any part of the body should avoid contact with the wall surface.

### C.Personal safety

- (1) When operating the machine, should be vigilant; do not in fatigue, alcohol, drugs or medication use under the condition of the machine, in order to avoid happening the accident caused by not concentration.

(2)



Operation, be sure to use protective equipment, such as dust masks, goggles, ear protection cover, etc .In order to avoid flying sand and dust contusion glasses hurt face, or because of the strong noise damage hearing.

(3) To avoid accidental activation. Before turning on the power supply, please make sure machine switch is closed. And confirmed after turning on the power supply, don't immediately put finger on the switch button, to prevent the occurrence of an accident.

(4) Before start the machine, should also check whether regulating lock wrench and tools is out of the machine.

(5) Operation, the body should not extend excessive forward, please always keep the balance of the body.

(6)



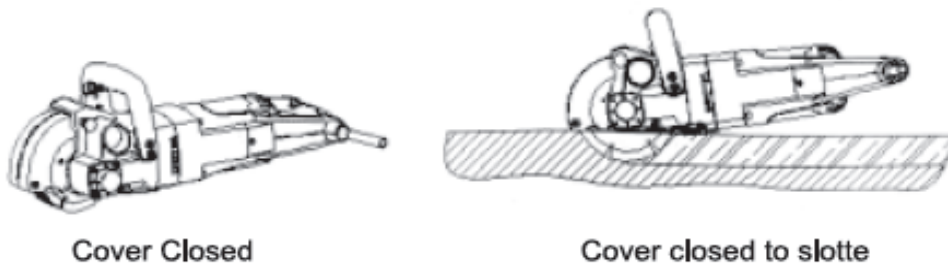
Operation, please don't wear loose clothes, don't wear a Bracelet, hair longer users should put hair into the protective cap avoid to touch the moving parts when operating, easy cause the happening of the accident.

## 5. Using attention

- (1) Before use, first check the power supply security, bad socket and power cord will cause poor contact, serious can cause electric shock, fire and other accidents.
- (2) When slotting jobs should remain straight, uniform, so as to maximize the cutting power.
- (3) When working with water cut operators shall wear insulating gloves and insulated shoes, which can avoid electric shock accidents.
- (4) Down on the job guide line can improve the efficiency of the slot and accuracy.
- (5) In the process of the machine belongs to high power cutting tools, work load is heavier, so before the use should check the connection parts of solid and reliable to use.
- (6) Dry cutting operations shall be equipped with dust removal equipment, so as to ensure a good working environment.
- (7) When machine meet the corner of the slot cutting work, should open the cover and especially pay attention to fly sand protection. Unprotected slotting operations is very dangerous, will cause serious personal injury.

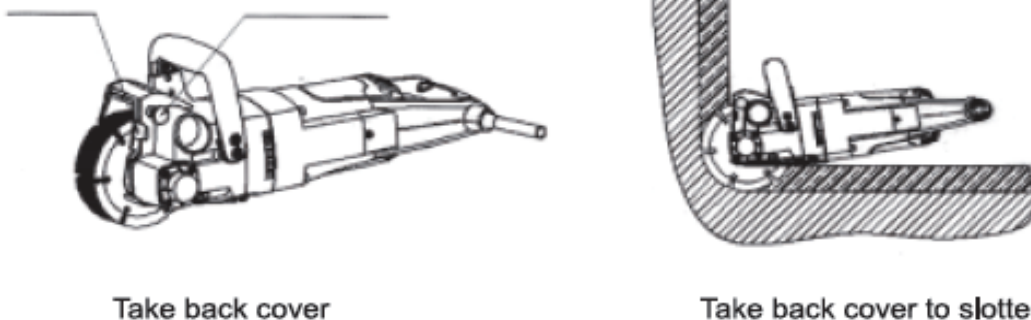
## 6. Operation indicator diagram

A. Chisel Level Directly



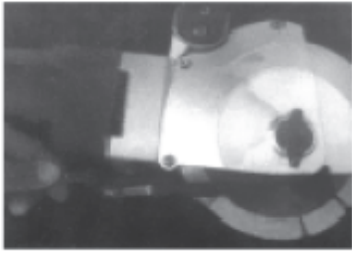
B. Slotte In Corner

Take back cover Pull out the lock pin

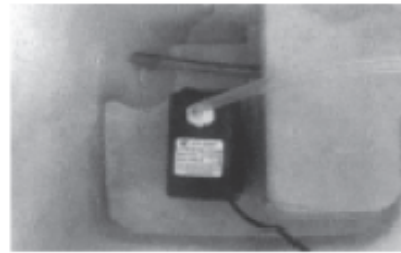


## 7. Pump using

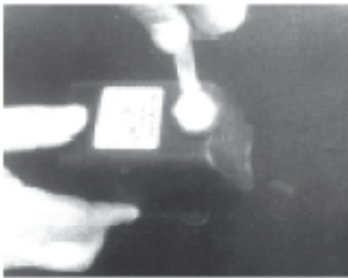
a. One side water pipe connected with machine



b. Another side water pipe connected with pump



c. Full pump into a bucket with water



## 8. Connect with Vacuum Cleaner





## 9. Change the cutting blade

a. Tools



b. Open the cover



c. Take back cover and pull out The lock pin



d. Loosen by counterclockwise



e. Take out clamp and adjust blade



f. Lock clockwise and finish blade assemble.



## 10. Maintenance



**Before the maintenance, pls turn off machine and pull out plug.**

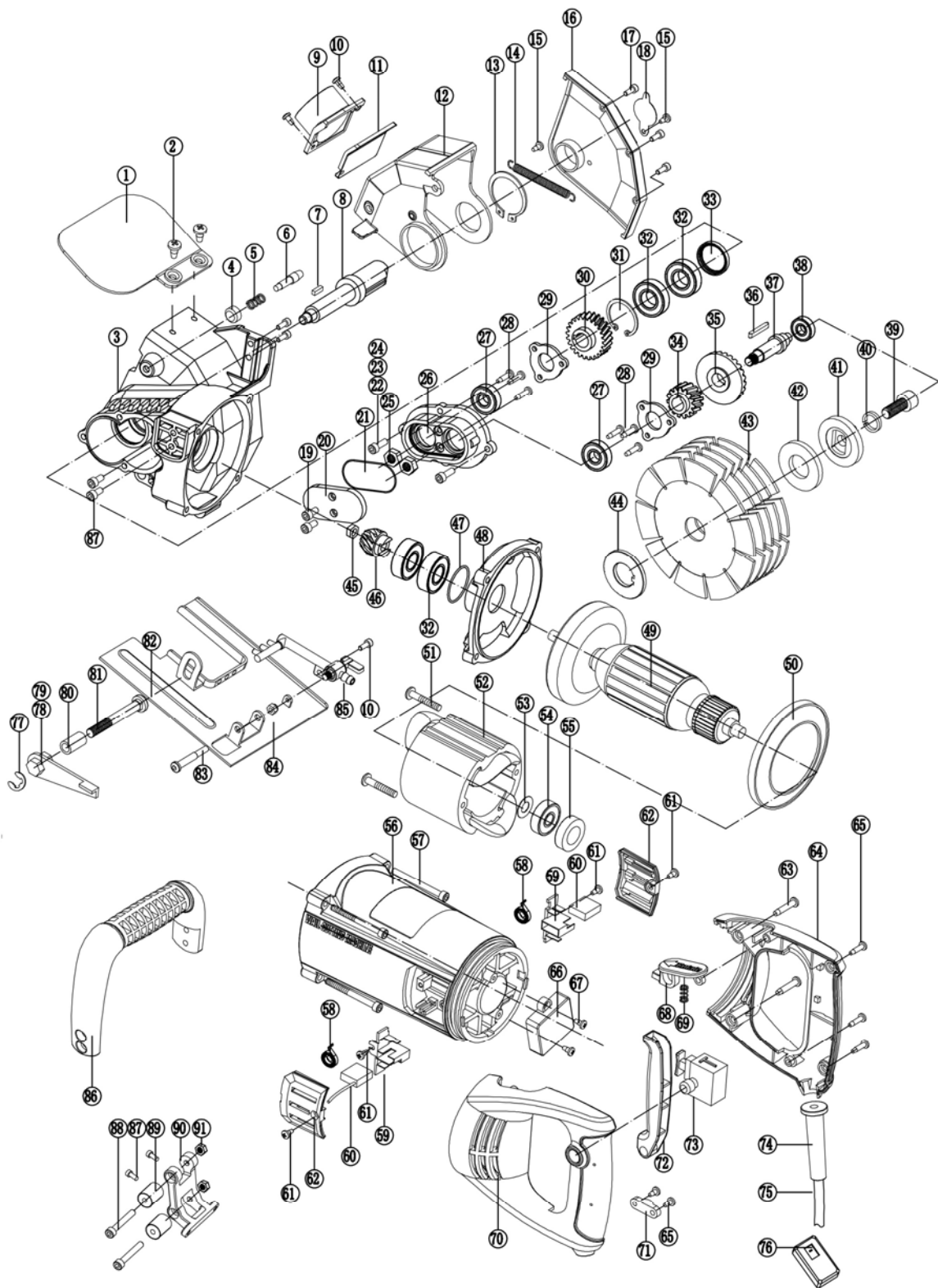
(1) This machine adopts the safety standards for manufacturing, if the machine fails, please don't removed, be sure by qualified professional maintenance personnel to repair. Otherwise it will bring you damage.

(2)



Requirement for maintenance: must use spare parts that original company supply, otherwise it will cause the damage of the machine or personal injury.

(3) The machine after each time using, be sure to clean up the sand, dust on the machine, and keep the switch, plug and handle all parts to be drying. Stored in the place children can't get, to maintain a dry place. In order to avoid machine rust does not work or easy cause accident.





## Spare parts list

Serial	Discreption	QTY	Serial	Discreption	QTY
1	Fender	1	47	O-ring	1
2	Cross flat head screw	2	48	Middle cover	1
3	Gear box	1	49	Armature	1
4	Self-lock nut	1	50	Wind circle	1
5	Self-lock spring	1	51	Self-drilling screw	2
6	Self-lock pin	1	52	Stator	1
7	Flat key	1	53	Armature shim	1
8	Output axis	1	54	Bearing	1
9	Dust cover	1	55	Bearing sleeve	1
10	Cross pan head screw	4	56	Motor housing	1
11	Block dust cover	1	57	Inner hexagon screw	4
12	Move dust cover	1	58	Coil spring	2
13	Axis circlip	1	59	Brush hold	1
14	Spring shield	1	60	Carbon brush	1
15	Flat head screw	2	61	Cross pan head screw	6
16	Dust proof	1	62	Carbon brush side cover	2
17	Inner hexagon screw	3	63	Cross pan head self-drilling screw	5
18	Protective cover shim	1	64	Right handle	1
19	Cross pan head screw	2	65	Cross pan head self-drilling screw	2
20	Side cover	1	66	Speed control	1
21	O-ring	1	67	Cross pan head screw	2
22	Inner hexagon screw	5	68	Rotating button	1
23	Spring washer	9	69	Spring	1
24	Flat mat	9	70	Left handle	1
25	Hexagon screw	2	71	Line pressing board	1
26	Front cover	1	72	Switch button	1
27	Bearing	2	73	Switch	1
28	Cross pan head screw	6	74	Protecting bush	1
29	Bearing cover	2	75	Cable	1
30	Big gear	1	76	Protection	1
31	Hole circlip	1	77	Split washer	1
32	Bearing	2	78	Adjust wrench	1
33	Skeleton oil seal	1	79	Lock nut	1
34	Small gear	1	80	Space bush	1
35	Big cone gear	1	81	Carriage bolts	1
36	Flat key	1	82	Base board	1
37	Middle axis	1	83	Inner hexagon screw	1
38	Bearing	1	84	Lock nut	1
39	Inner hexagon screw	1	85	Water nozzle	1
40	Spring washer	1	86	Front handle	1
41	Top board	1	87	Inner hexagon screw	6
42	Medium plate	1	88	Inner hexagon screw	2
43	Blade	5	89	Small guide wheel	2
44	Press board	1	90	Follow rest	1
45	Lock nut	1	91	Lock nut	2
46	Small cone gear	1			