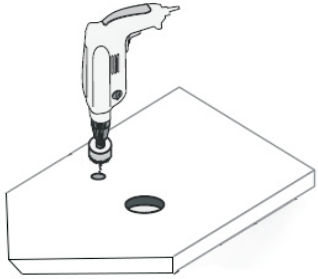


# Basin Countertop Installation and Maintenance

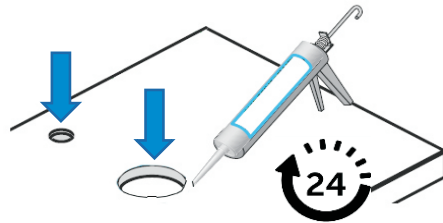
PLEASE READ THIS INSTRUCTION GUIDE FULLY PRIOR TO COMMENCING ANY PART OF THE INSTALLATION

1



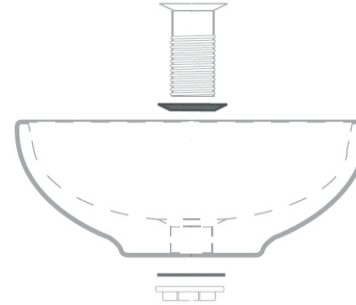
Cut holes if necessary for waste and tap ensuring the tap hole is positioned at a distance which does not cause interference with the basin

2



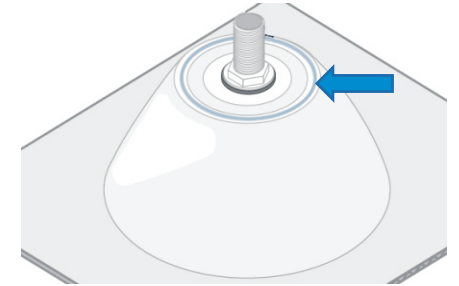
Seal the inside/exposed edge after cutting to prevent water/moisture penetration

3



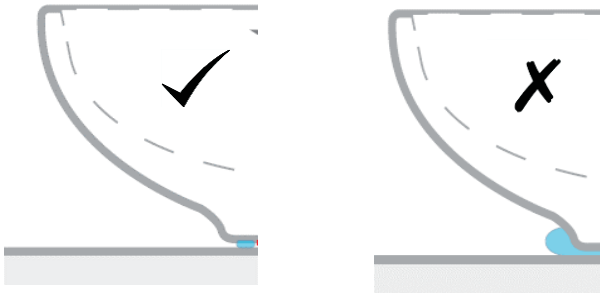
Fit basin waste to basin, following the waste instruction

4



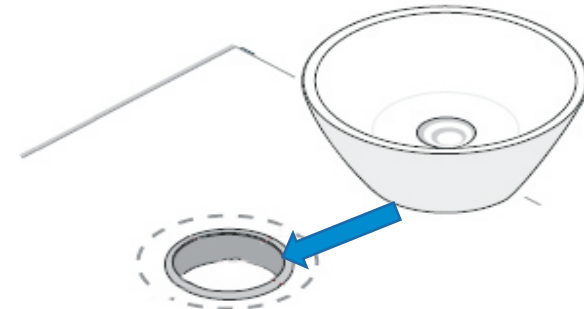
Apply a bead of silicone slightly in from the edge of the basin

5



Apply the silicone slightly in from the edge of the outer edge of the underside of the basin

6



Place the basin into position with the waste through the drilled hole  
Allow all sealant to dry for at least 24 hours before use

To maintain the surface finish of your product, wipe clean after every use, using a clean damp cloth, a mild detergent mixture can be used.  
Do not use abrasive cleaning agents/materials which can strip and scratch the surface, use of these agents/materials can invalidate your guarantee