



*Woodworking machinery at its best!*

## **WALL MOUNTED DUST EXTRACTOR MODEL: W685 & W685KIT**



**Charnwood, Cedar Court, Walker Road, Hilltop Industrial Estate, Bardon,  
Leicestershire, LE67 1TU**

**Tel. 01530 516 926 Fax. 01530 516 929  
email: [sales@charnwood.net](mailto:sales@charnwood.net) website: [www.charnwood.net](http://www.charnwood.net)**

# GENERAL SAFETY RULES



**WARNING:** Do not attempt to operate the machine until you have read thoroughly and understood completely all instructions, rules, etc. contained in this manual. Failure to comply may result in accidents involving fire, electric shock, or serious personal injury. Keep this owner's manual and review frequently for continuous safe operation.

1. Know your machine. For your own safety, read the owner's manual carefully. Learn its application and limitations, as well as specific potential hazards pertinent to this machine.
2. Make sure all tools are properly earthed.
3. Keep guards in place and in working order. If a guard must be removed for maintenance or cleaning, make sure it is properly replaced before using the machine again.
4. Remove adjusting keys and spanners. Form a habit of checking to see that the keys and adjusting spanners are removed from the machine before switched it on.
5. Keep your work area clean. Cluttered areas and workbenches increase the chance of an accident.'
6. Do not use in dangerous environments. Do not use power tools in damp or wet locations, or expose them to rain. Keep work areas well illuminated.
7. Keep children away. All visitors should be kept a safe distance
8. from the work area.
9. Make workshop childproof. Use padlocks, master switches and remove starter keys.
10. Do not force the machine. It will do the job better and be safer at the rate for which it is designed.
11. Use the right tools. Do not force the machine or attachments to do a job for which they are not designed. Contact the manufacturer or distributor if there is any question about the machine's suitability for a particular task.
12. Wear proper apparel. Avoid loose clothing, gloves, ties, rings, bracelets, and jewellery which could get caught in moving parts. Non-slip footwear is recommended. Wear protective hair covering to contain long hair.

13. Always use safety glasses. Normal spectacles only have impact resistant lenses. They are not safety glasses.
14. Do not over-reach. Keep proper footing and balance at all times.
15. Maintain the machine in good condition. Keep the machine clean for best and safest performance. Follow instructions for lubrication and changing accessories.
16. Disconnect the machine from power source before servicing and when changing the blade.
17. Never leave the machine running unattended. Turn the power off. Do not leave the machine until it comes to a complete stop.
18. Do not use any power tools while under the effects of drugs, alcohol or medication.
19. Always wear a face or dust mask if operation creates a lot of dust and/or chips. Always operate the tool in a well ventilated area and provide for proper dust removal. Use a suitable dust extractor.

## **ADDITIONAL RULES FOR DUST EXTRACTORS**

1. Dust extractors are frequently moved around the workshop. Make sure that mains cables and extractor hoses are positioned in such a way that they do not present a trip hazard.
2. Do not pick up pieces of metal or chunks of wood.
3. Switch off and unplug the extractor before removing the collection bag and/or filter.
4. Do not allow the collection bag to become over full.
5. When necessary, wash, thoroughly rinse and completely dry the filter bag. Using a wet or damp filter bag will reduce its efficiency as it will quickly become clogged.
6. Dispose of waste in accordance with local regulations.

# Specification

Motor (Induction)	750W (1hp) 240V
Flow Rate	850 cubic metres per hour
Inlet Diameter	100mm
Bag Capacity	60 litres
Filtration Level	5 microns
Maximum Recommended Hose Length	3 metres
Maximu Continuous Run Time	2 hours
Weight	27kg
Rating	Hobby
Warranty	1 Year

**Hobby Rating** – Suitable for weekend DIY’ers and woodworking enthusiasts. Refers to generally lighter weight machines with lower power ratings and smaller tooling capacities. Typically only ever used by one person for short periods of time or longer periods infrequently. Machinery should be well maintained in a clean, dry environment such as a home workshop, garage or timber shed. **Expected maximum use of 100 hours annually.**

**Please Note:** Using a product in excess of its rating will void the manufacturer’s free warranty.

# Unpacking



All parts are contained in one carton



Unpack the parts carefully and check that everything is present as shown.

If anything is missing contact your retailer immediately.

## Assembly



*Leave all bolts finger tight until each castor is fitted.*

Place the machine on its back and bolt one of the castors to the baseplate using four dome head M5 bolts with washers and nuts on the underside. Note that the longer edge of the fixing plate should be horizontal.



Continue with the remaining three castors.



Stand the extractor on its castors.

Insert two M6 bolts into the top holes of the square extractor outlet and slip the rubber gasket onto them.



Fit the plastic adapter over the bolts and secure with washers and nuts. Add the remaining four bolts. Tighten the nuts when all six bolts are in position.



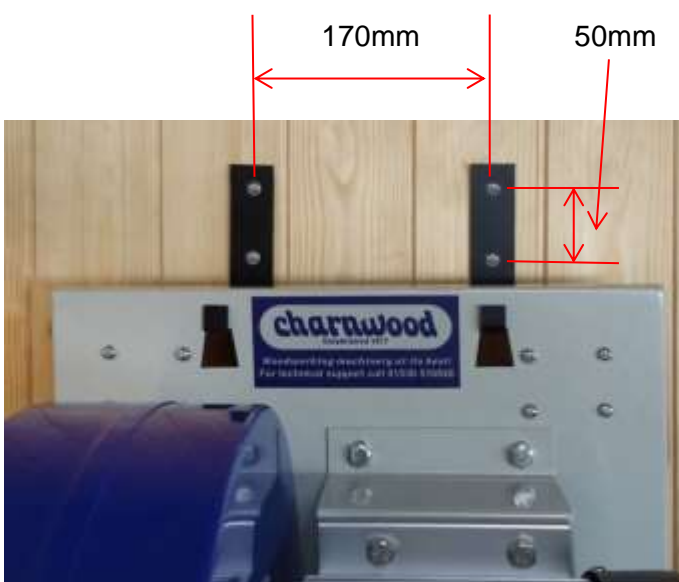
Fix the handle to the fan casing using the two M6 bolts supplied.



Fit the dust collection bag over the round outlet and secure it in place with the jubilee clip supplied.

The dust bag is emptied through the inlet after first removing it from the extractor. Always ensure that the machine is isolated before removing the bag or connecting a hose.

The extractor is now ready for use in the horizontal mode after connecting to the hose attached to your woodworking machine.



Two wall brackets are supplied in case you wish to wall mount the extractor. Attach these to a suitably strong wall using appropriate fixings.

The extractor can now be wall mounted by hooking the two cut outs in the base over the wall brackets. The castors can be left in place, allowing the unit to be quickly dismantled and moved when required.

## W685KIT Hose & Dust Hood Kit (Optional Accessory)



The Kit consists of a 3m length of 100mm diameter flexible hose, a dust hood and a support arm that can be positioned in a convenient place to collect from bench top machinery, most notably a woodturning lathe.

Two hose clamps securely attach the hose to the extractor and the hood. The hose can also be used without the hood to connect to any woodworking machine with a 100mm diameter dust outlet.

When fitted to the support arm the centre of the hood is at a height of 920mm.

Dust Hood opening size 240mm x 120mm.

## Assembly



Attach the mounting bracket to the extractor fan housing using the two bolts provided.





Insert the reduced end of the support arm into the mounting bracket.



Attach the adjustable bracket assembly to the dust hood using the bolts, nuts and washers fitted to the hood. Ensure that the heads of the bolts are inside the hood and the nuts/washers outside.

Insert the end of the adjustable bracket into the support arm and tighten the jubilee clip to fix in the desired position.



Connect the flexible hose to the dust hood and the extractor using the hose clips supplied.

Adjust & lock the bracket and arm assembly to position the hood as required.

# Using the Extractor

The W685 extractor is designed to collect wood dust, chips and shavings from the woodworking machine, transport it into the collection bag and filter the clean air out.

Because this is a single bag machine, the same bag acts as collector and filter. The bag should therefore be emptied when 50% full, otherwise there will not be enough surface area to act as a filtration medium and performance will be impaired.

A 100mm diameter hose should be connected to the extractor inlet and secured with a suitable hose clamp. Maximum recommended hose length is 3m. Many woodworking machines are fitted with 100mm diameter dust outlets. When collecting from bench top machines it may be necessary to use a reducer to connect to a smaller diameter outlet. Any reducer should be fitted as close as possible to the woodworking machine in order to maintain maximum performance – suction is reduced whenever airflow is restricted on this type of extractor. Charnwood stock a large range of hoses, connectors and reducers, details of which can be found on their website.

Always switch on the extractor before starting the woodworking machine. Allow it to continue running for a few moments after the other machine is switched off in order to clear the hose.

## Troubleshooting

Problem	Possible Cause	Remedy
Motor fails to start	Blown fuse	Replace fuse
Motor buzzes but fails to run	Failed start capacitor	Replace capacitor
Motor starts but fails to run. Will run if green button held.	Failed NVR Switch	Replace Switch
Sudden drop in performance	Blockage in hose or extractor inlet/outlet grills.	Remove filter bag and hose, clean grills and clear any blockages.
Sudden drop in performance	Filter bag full / too full.	Empty filter bag
Gradual drop in performance	Filter bag clogged with dust	Turn bag inside out and scrape clean
General lack of performance	Hose length greater than recommended maximum.	Reduce length to 3m maximum
Lack of performance	Airflow restricted by narrow diameter hose.	Increase hose diameter to 100mm and use a reducer at woodworking machine.


# Declaration of Conformity for CE Marking

Charnwood Declare that Woodworking Dust Collector, Model W696

Conforms with the following Directives: Machinery Directive 2006/42/EC  
EMC Directive 2004/108/EC

And further conforms to the machinery example for which the EC type examination Certificate No. AM 50187475 and AE 50220617 have been issued by TUV Rheinland LGA Products GmbH, Tillystrasse 2, 90431, Nurnberg, Germany.

I hereby declare that equipment named above has been tested and found to comply with the relevant sections of the above referenced specifications. The machinery complies with all essential requirements of the directive.

Signed:  Dated: 30/09/2016 Location: Leicestershire

Richard Cook, Director



Please dispose of packaging for the product in a responsible manner. It is suitable for recycling. Help to protect the environment, take the packaging to the local amenity tip and place into the appropriate recycling bin.

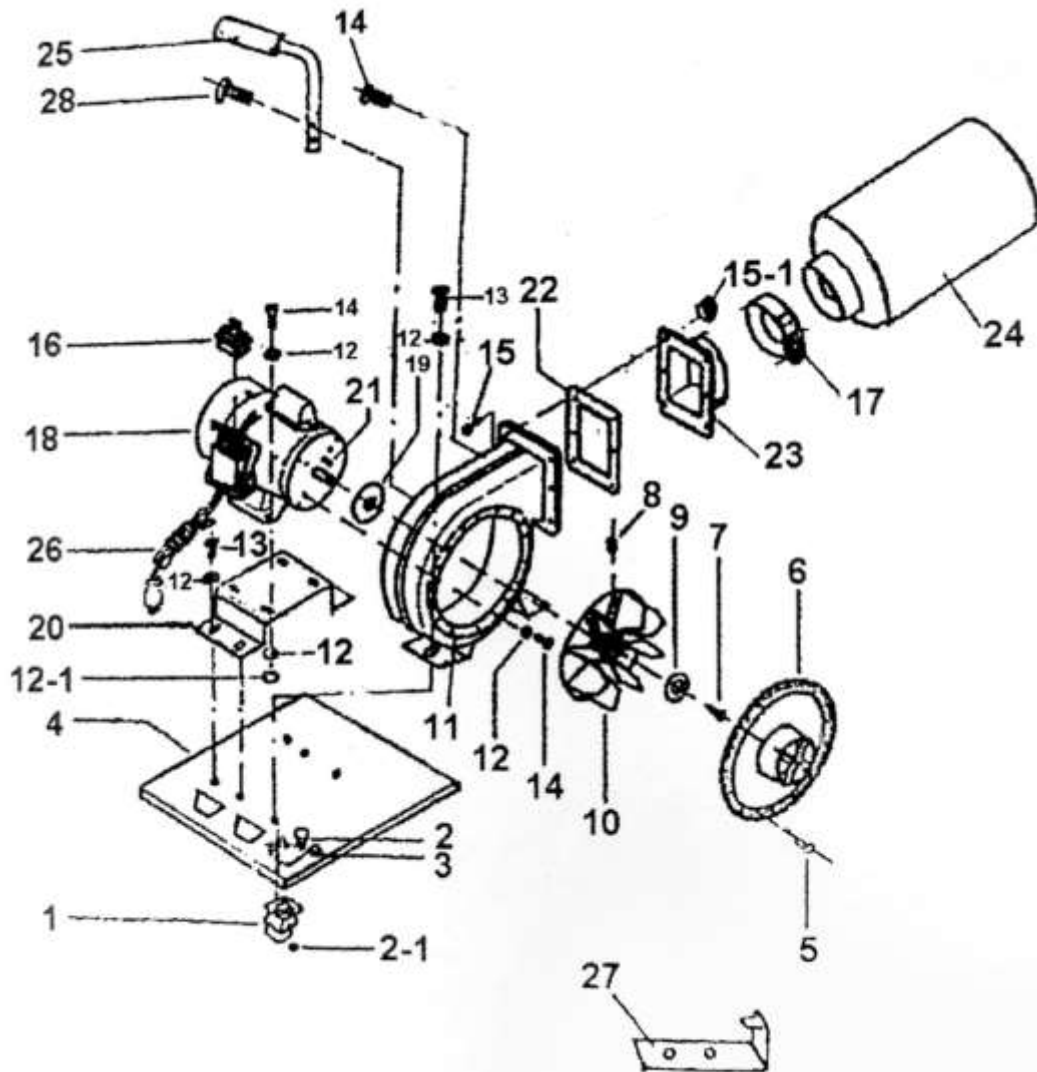


Only for EU countries  
Do not dispose of electric tools together with household waste material!

In observance of European Directive 2002/96/EC on waste electrical and electronic equipment (EEE) and its implementation in accordance with national law, electric tools that have reached the end of their life must be collected separately and returned to an environmentally compatible recycling facility.

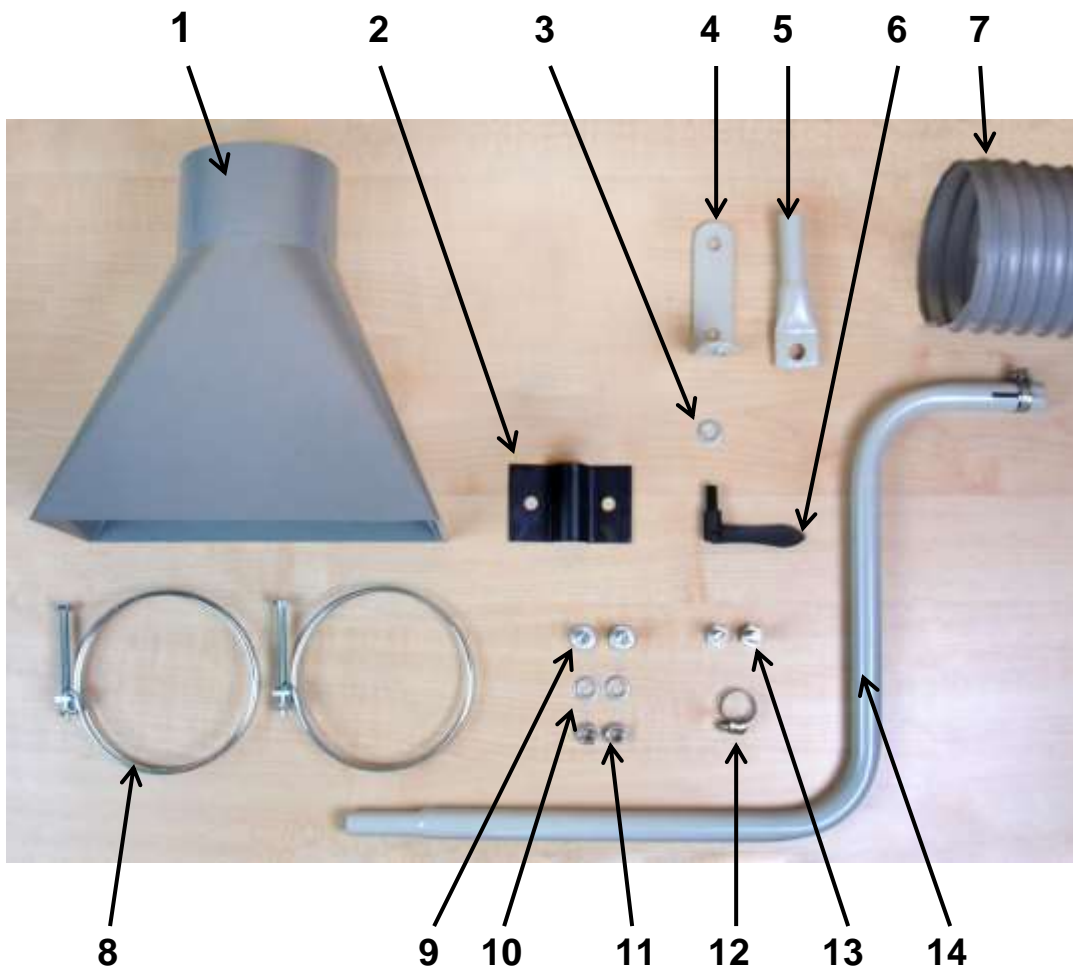
Your local refuse amenity will have a separate collection area for EEE goods

# Charnwood W685 Parts List



Part No.	Description	Part No.	Description
01	Castor	02	Pan Head Screw
02-1	Hex Nut	03	Washer
04	Base	05	Pan Head Screw
06	Inlet Cover	07	Left Hand Cap Screw
08	Set Screw	09	Washer
10	Impeller	11	Impeller Housing
12	Washer	12-1	Hex Nut
13	Hex Bolt	14	Hex Bolt
15	Hex Nut	15-1	Hex Bolt
15-2	Washer	16	Switch
17	Dust Bag Clamp	18	Motor
19	Gasket	20	Motor Support Plate
21	Key	22	Gasket
23	Outlet	24	Dust Bag 5 Micron
25	Handle	26	Power Cord
27	Hook	28	Screw

# Charnwood W685KIT Parts Drawing



## W685KIT Parts List

Part No.	Description	Part No.	Description
01	Dust Hood	02	Support Bracket
03	Washer	04	Dust Hood Bracket
05	Bracket Adapter	06	Locking Lever
07	Hose 100mm x 3m	08	Hose Clip 100mm
09	Coach Bolt M8 x 20mm	10	Washer M8
11	Nut M8	12	Small Jubilee Clip
13	Hex Bolt M8 x 16mm	14	Support Arm



*Woodworking machinery at its best!*

Updated October 2016

**Charnwood, Cedar Court, Walker Road,  
Hilltop Industrial Estate, Bardon Hill, Leicestershire, LE67 1TU**

**Tel. 01530 516 926 Fax. 01530 516 929  
email: [sales@charnwood.net](mailto:sales@charnwood.net) website: [www.charnwood.net](http://www.charnwood.net)**