

COSTWAY®



USER'S MANUAL

Mobile Toilet BA7620

THIS INSTRUCTION BOOKLET CONTAINS **IMPORTANT** SAFETY INFORMATION. PLEASE READ AND KEEP FOR FUTURE REFERENCE.

Five product advantages to easily meet your hygiene needs

- 1. Rugged And Reliable: Designed according to the size of an adult, it can bear 100 KG (220 LBS), with strong structure and reliable strength, both sides of the interlocking components are load-bearing design, ensuring that the two tanks are firmly interlocked together.
- 2. Repeated Use: The water tank has a capacity of about 12 liters and can provide flushing up to 30 times. It can also be replenished with water at any time without external piping required. The manual air pump can be used normally for 100,000 times.
- 3. Super Easy To Clean Up: Separate portable structure is easy to clean. Rinsing with water will not reflow. The 10-liter one can be used for about one day by adults, and the 20-liter one can be used for 2-3 days by adults.
- 4. No Leakage: Both reservoirs are integrated molding without any seams and will never leak. The sliding valve is double-layer sealed to prevent dirt leakage and odor emission.
- 5. Easy To Carry: Suitable for a wide range of compact spaces. The completely independent storage design doesn't need any external devices.

Product Parameters

Product Material:	High density polyethylene
Product Specifications:	20L
Packing Size:	42x36x43cm (16"x14"x16.5")
Product Weight:	5.5KG/12LBS

Product Maintenance

1. Put gently, do not invert, do not carry it roughly.
2. Avoid long-term exposure to sunlight.
3. During use, the back cover should not be relied on to prevent your body falling damage from its being crushed.
4. Do not scratch the surface with a sharp object.
5. Regularly clean up the dirt.
6. Any of non-toxic and non-corrosive deodorant can be used.
7. Once the sewage tank cannot be cleaned out with water, please use the brush included for cleaning.
8. Do not use alcohol-based detergents or high-concentration acidic cleaning fluids to clean them, which are detrimental to rubber sealing.
9. In extremely cold weather conditions, antifreeze can be added into the clean water tank.

Structure Description



Instructions For Using Steps



Step 1. Open the lid of the clean water tank, pour water in, and then close the lid to tighten it.



Step 2. Open the sealing diaphragm handle to fully open the partition and keep the lever open during use.



Step 3. Do not rely on the toilet cover during use, so as not to cause damages.

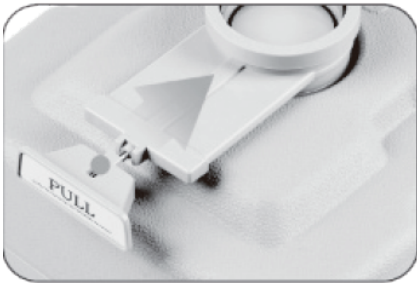


Step 4. After use, cover the toilet lid.

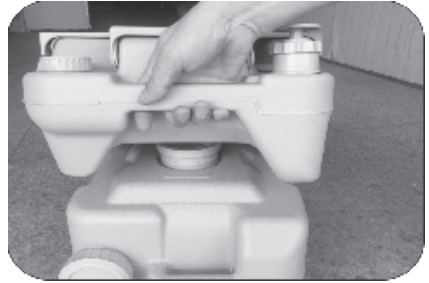


Step 5. Press the pneumatic pump several times to rinse. After rinsing, push the water diaphragm handle to prevent the odor from spreading.

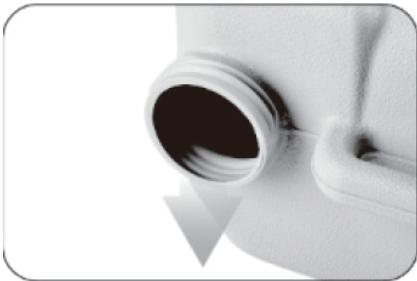
Instructions For Cleaning Steps



Step 1. When cleaning up, first confirm that the diaphragm handle has been pushed to the end, in a closed state.



Step 2. Open the lock buckle on both sides and remove the clean water tank.



Step 3. Take the sewage tank to the appropriate place, open the lid of the sewage tank and pour out the dirt.

