



## **USER'S MANUAL**

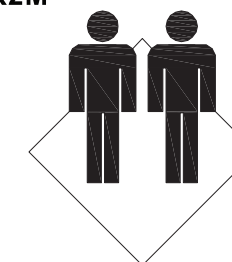
### **Mirror Jewellery Cabinet HW54403**

THIS INSTRUCTION BOOKLET CONTAINS **IMPORTANT** SAFETY INFORMATION. PLEASE READ AND KEEP FOR FUTURE REFERENCE.

#### **Please give us a chance to make it right and do better!**

Contact our friendly customer service department for help first.  
Replacements for missing or damaged parts will be shipped ASAP!

**FLOOR AREA  
2MX2M**



**ASSEMBLED BY 2 ADULTS**

**Follow Costway**  
Visit us: [www.costway.com](http://www.costway.com)



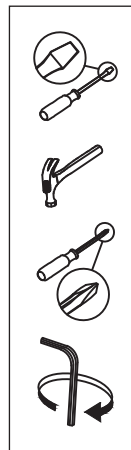
# Contact Us!

**Do NOT return this item.**

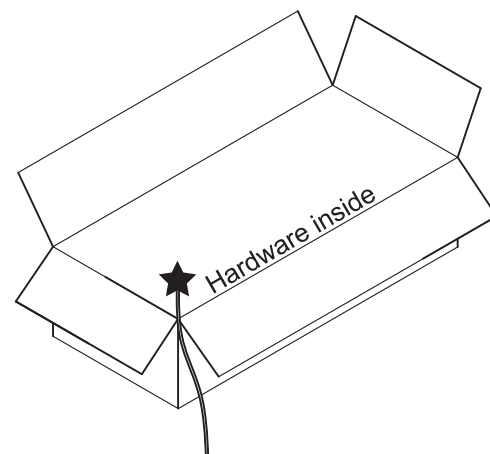
Contact our friendly customer service department for help first.



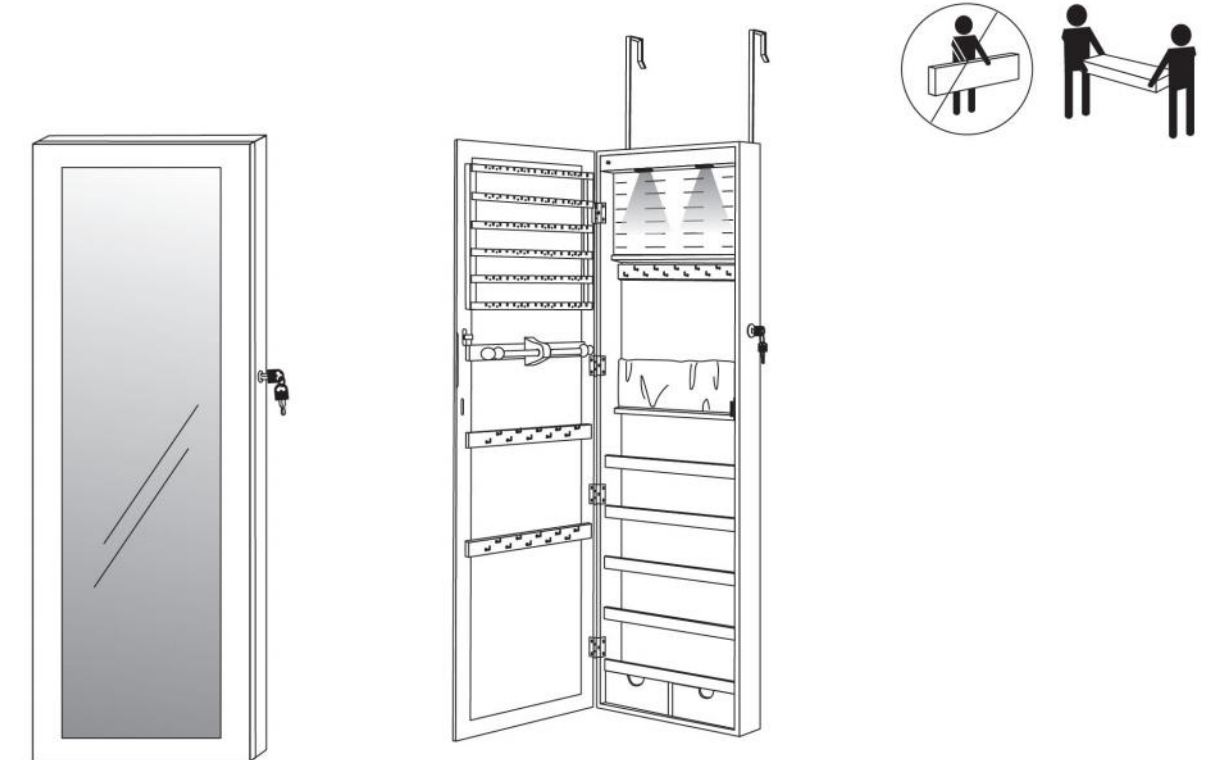
## Before You Start



- Read each step carefully before starting. It is very important to ensure each step followed in correct order, otherwise assembly difficulties may occur.
- Most of board parts are labeled or stamped on the raw edges. Have a check to make sure all parts are included.
- Work in a spacious area, preferably on a carpet close to where the unit will be used.
- Keep the handtools close at hand. Do not use power tools to assemble your furniture. They may scratch or damage the parts.



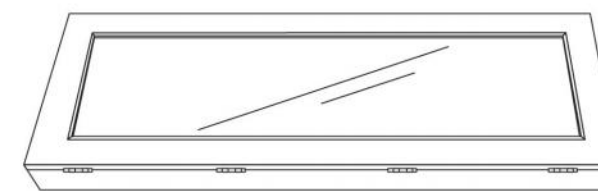
Two adults must be required. Before you begin, please follow assembling instruction step by step.



### Maintenances:

1. Avoid exposure to direct sunlight and heat sources.
2. Keep the cabinet door closed when not in use.
3. Use mild furniture cleaner to clean the cabinet.
4. Open the cabinet door gently, to avoid falling of contents.
5. The new cabinet may have paint odour upon unpack, it will disappear in a short period of time.

### Parts list

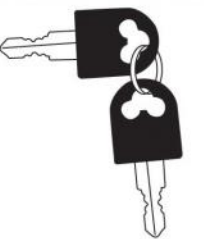


**A 1pc**

Double sided tape

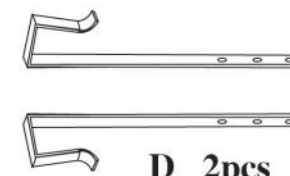


**B 1pc**



**C 2pcs**

### Over The Door



**D 2pcs**

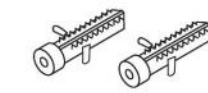


**E 4pcs**



**F 4pcs**

### Wall Mount



**G 2pcs**



**H 2pcs**

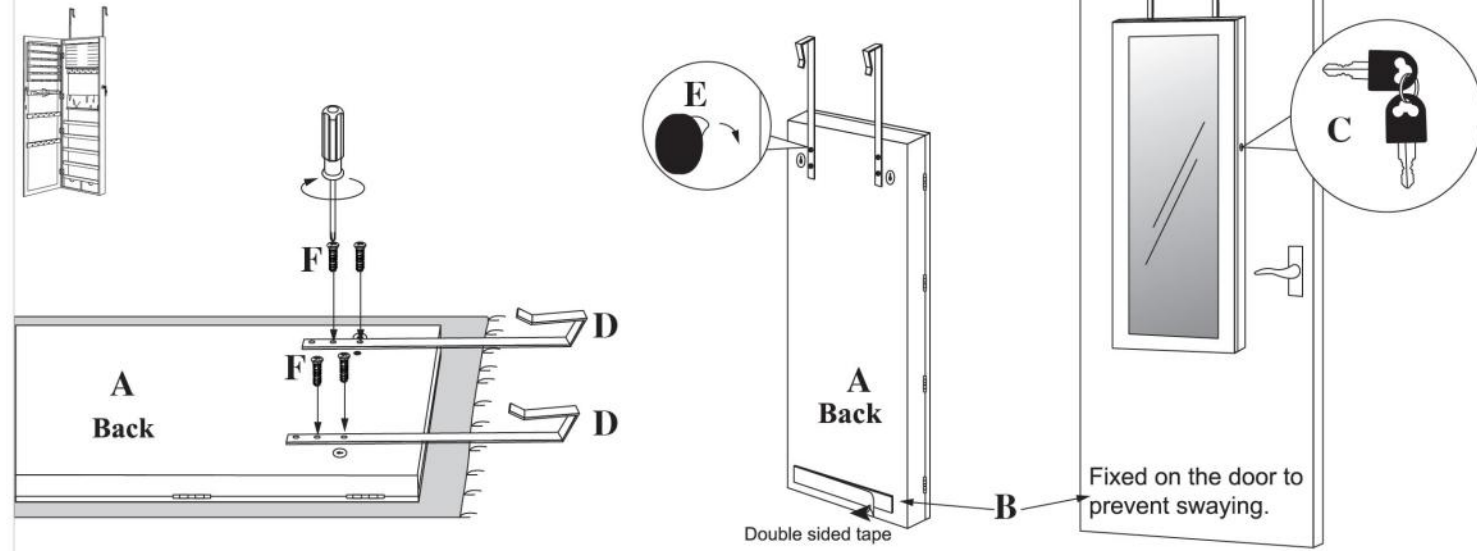
Tools Required



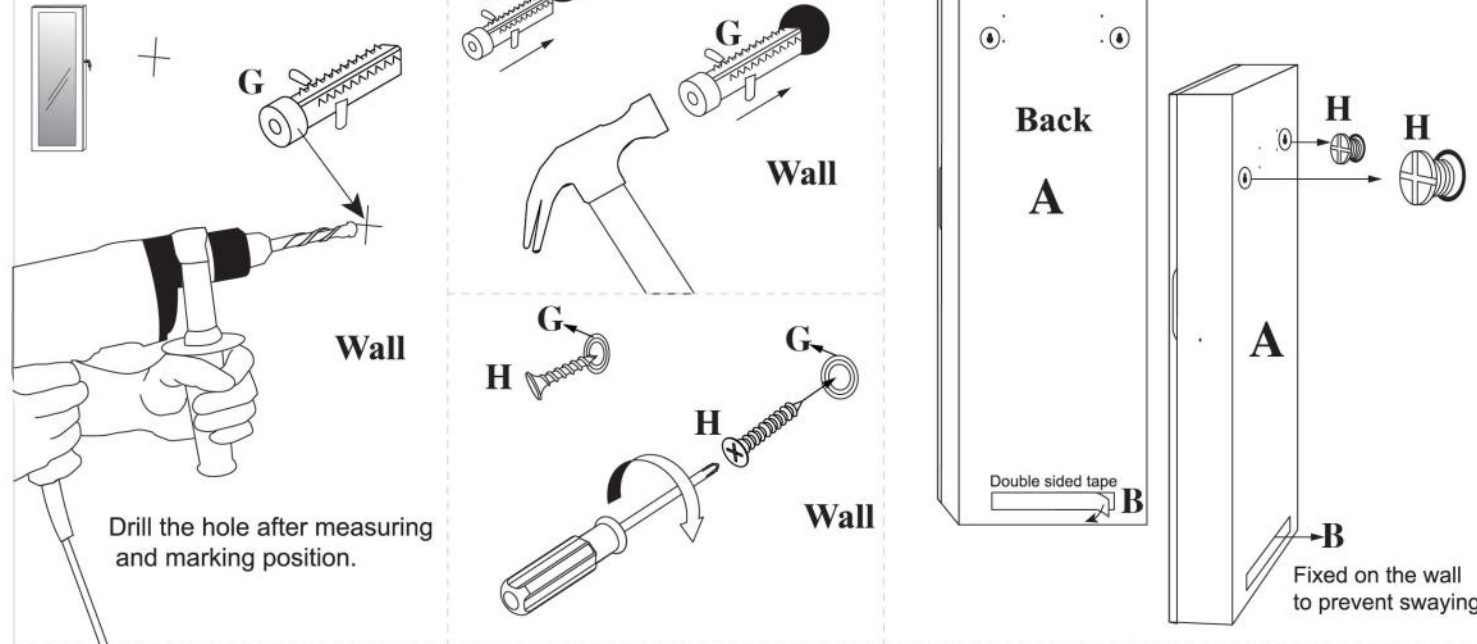
**Assistance may be required for assembly of this product**

Please read the instructions carefully before assembling the cabinet.  
Two adults are required for assembly of this product on a clean, flat surface instead of a rough surface.

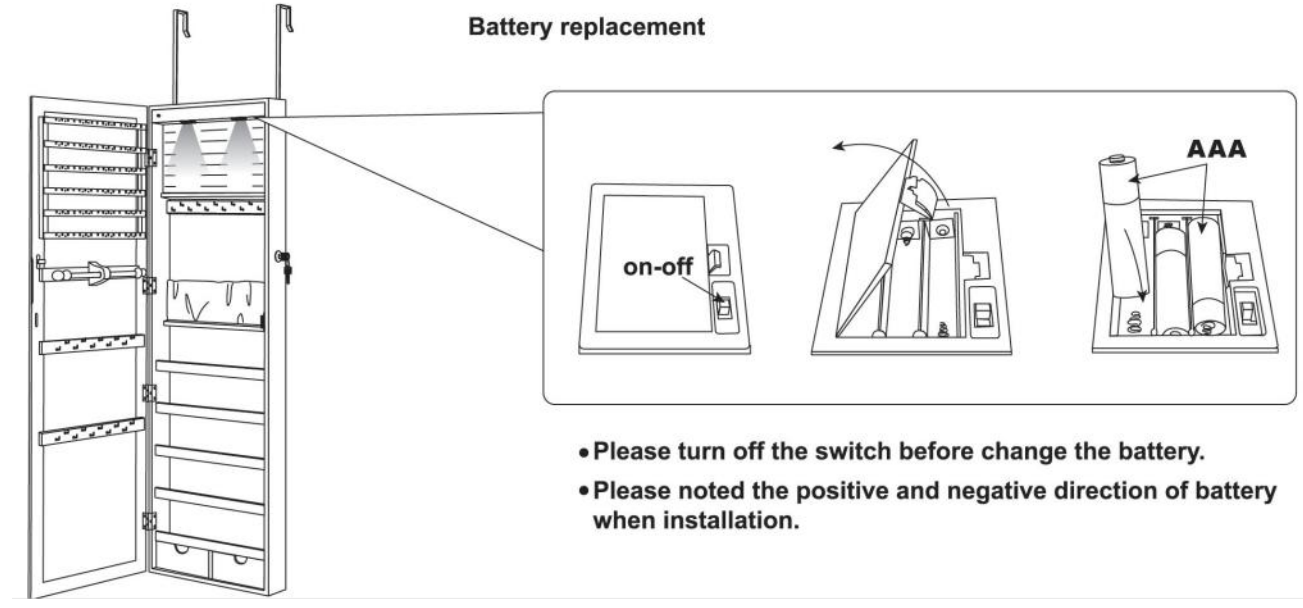
**Over The Door**



**Wall Mount**



**Battery replacement**



- Please turn off the switch before change the battery.
- Please noted the positive and negative direction of battery when installation.

## Care and Maintenance

Use a soft, clean cloth that will not scratch the surface when dusting.

Use of furniture polish is not necessary.

Should you choose to use polish, test first in an inconspicuous area.

Using solvents of any kind on your furniture may damage the finish.

Never use water to clean your furniture as it may cause damage to the finish.

Liquid spills should be removed immediately. Using a soft clean cloth, blot the spill gently. Avoid rubbing.

Check bolts/screws periodically and tighten them if necessary.

## Further advice about wood furniture care

It is best to keep your furniture in a climate-controlled environment.

Extreme temperature and humidity changes can cause fading, warping, shrinking and splitting of wood.

It is advised to keep furniture away from direct sunlight as sun may damage the finish.

Proper care and cleaning at home will extend the life of your purchase.

Following these important and helpful tips will enhance your furniture as it ages.