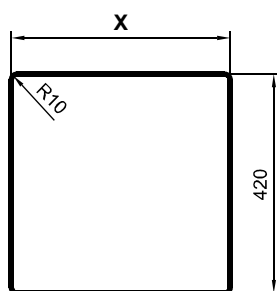
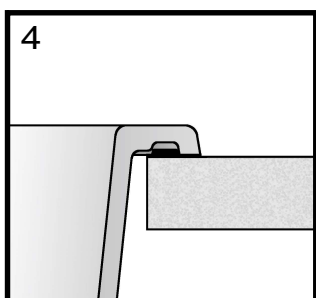
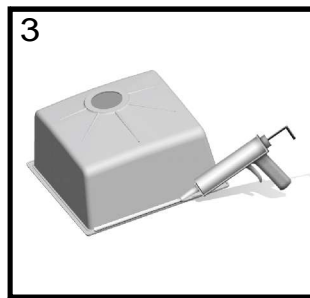
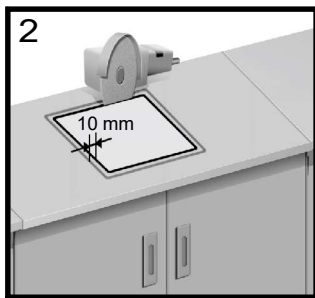
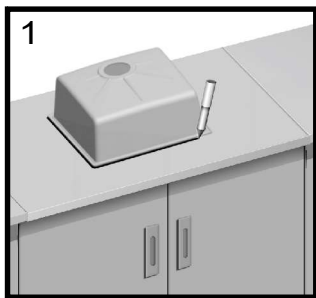
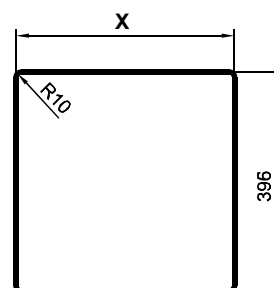
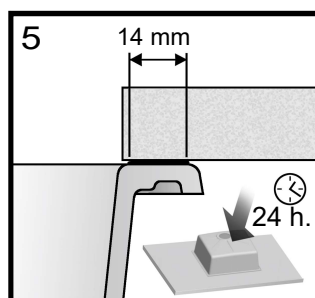
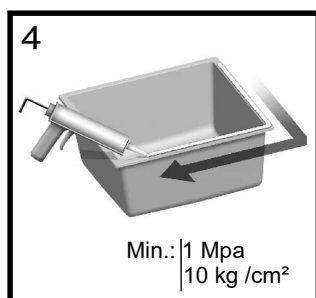
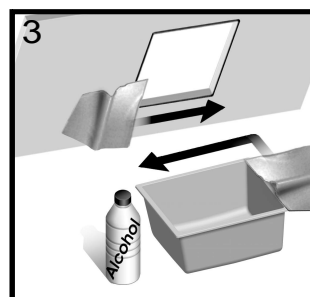
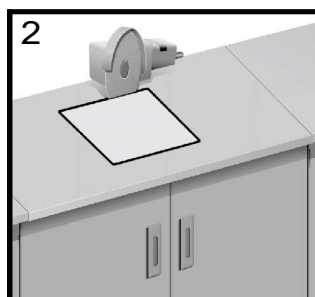
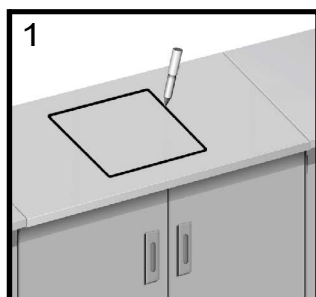


ENCASTRE - CIMA DE BANCADA



X: 420 mm → 40x40
520 mm → 50x40

BAJO ENCIMERA - DEBAIXO BANCADA



X: 396 → 40x40
496 → 50x40

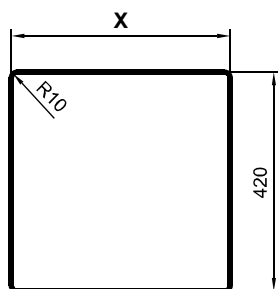
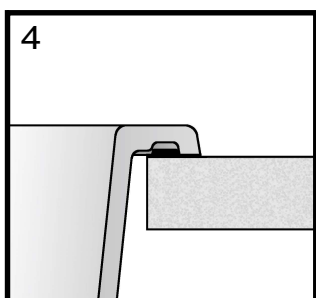
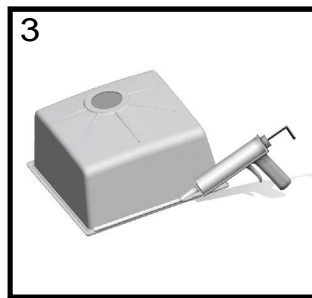
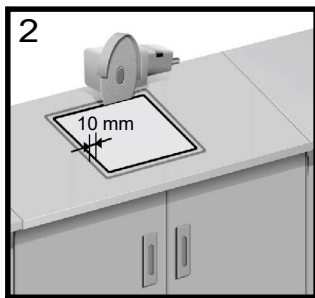
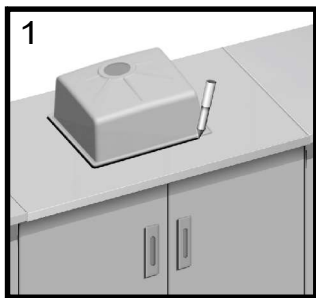
CONSEJOS DE LIMPIEZA

Limpieza diaria	agua jabonosa + esponja
Roces con metal (sartenes, ollas, cucharas y tenedores...)	aceite de parafina
Manchas resistentes	esponja + detergente limpiador para baños y cocinas
Manchas más resistentes	producto enriquecido con oxígeno (añada 10 bolsas de levadura en polvo a tres litros de agua en el fregadero y deje que haga su efecto toda la noche)
Otras manchas (pintura, tinta...)	Trapo impregnado en alcohol
¡ATENCIÓN!	No use productos con ácidos cítricos

DICAS DE LIMPEZA

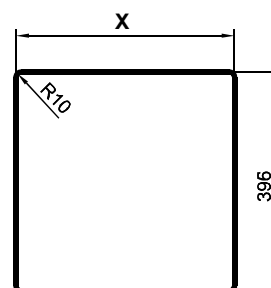
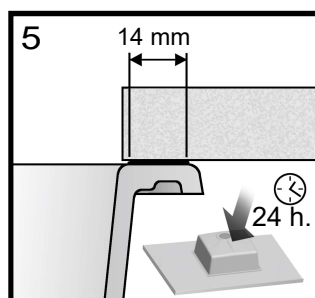
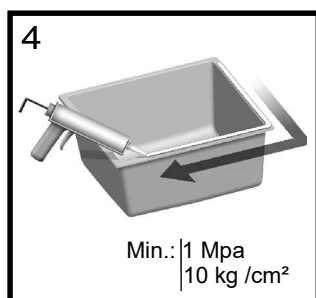
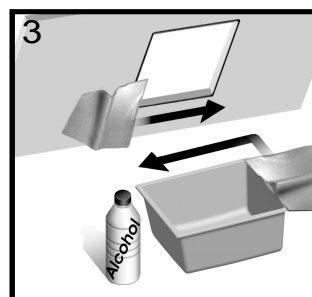
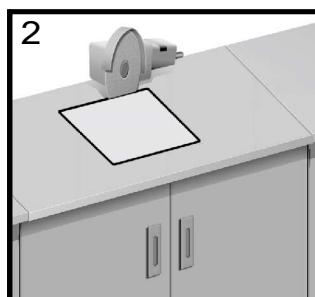
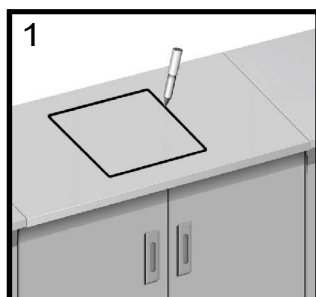
Limpeza diária	água e sabão + esponja
Fricção com metal (frigideiras, potes, colheres e garfos...)	óleo de parafina
Manchas difíceis	esponja+detergente de limpeza para cozinhas e banheiros
Manchas mais difíceis	produto com oxigênio oxígeno (adicionar 10 sacos de fermento em polvo a três litros de água e deixar o trabalho dutante a noite)
Otras manchas (pintura, tinta.)	Tecido impregada com álcool
ATENÇÃO!	Não utilize produtos com ácido cítrico

ENCASTRÉ - INCASSATO



X: 420 mm → 40x40
520 mm → 50x40

SOUS-MEUBLE - SOTTO PIANO



X: 396 → 40x40
496 → 50x40

CONSEIL D'ENTRETIEN

CONSIGLI PER LA PULIZIA

Entretien quotidien	eau savonneuse + éponge
Abrasion de métal (fond de marmite, couverts...)	huile de paraffine
Taches persistantes	éponge + crème à récurer
Taches très persistantes	produit enrichi d'oxygène (diluer 10 sachets de levure chimique dans 3L d'eau dans l'évier et laisser agir toute la nuit)
Autres taches (peinture, encre...)	chiffon imbibé d'alcool
ATTENTION!	ne pas utiliser de produit à base d'acide citrique

Pulizia diaria	acqua con sapone + spugna
Graffi con metallo (padelle, pentole, cucchiaio e forchette...)	Olio di paraffina
resistenti	spugna + detersivo per bagni e cucine
Manchie ancora piu resistenti	prodotto arricchito con ossigeno (aggiungere 10 sacchetti di lievito polvere a 3L d'acqua nei lavandino e lasciarlo agire tutta la notte)
Altre tipi di manchie	Panno impregnato in alcool
ATTENZIONE!	no usare prodotti con accidi citrici